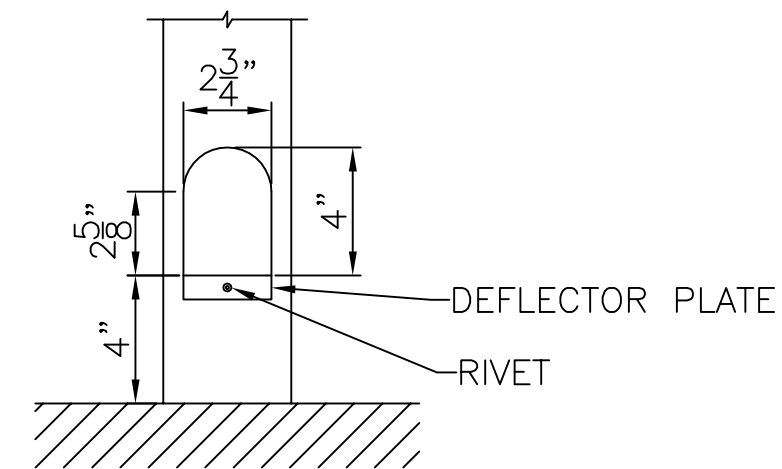


A  
DETAIL PAGE 1  
SECTION VIEW OF CANOPY  
SCALE: 1/2" = 1'

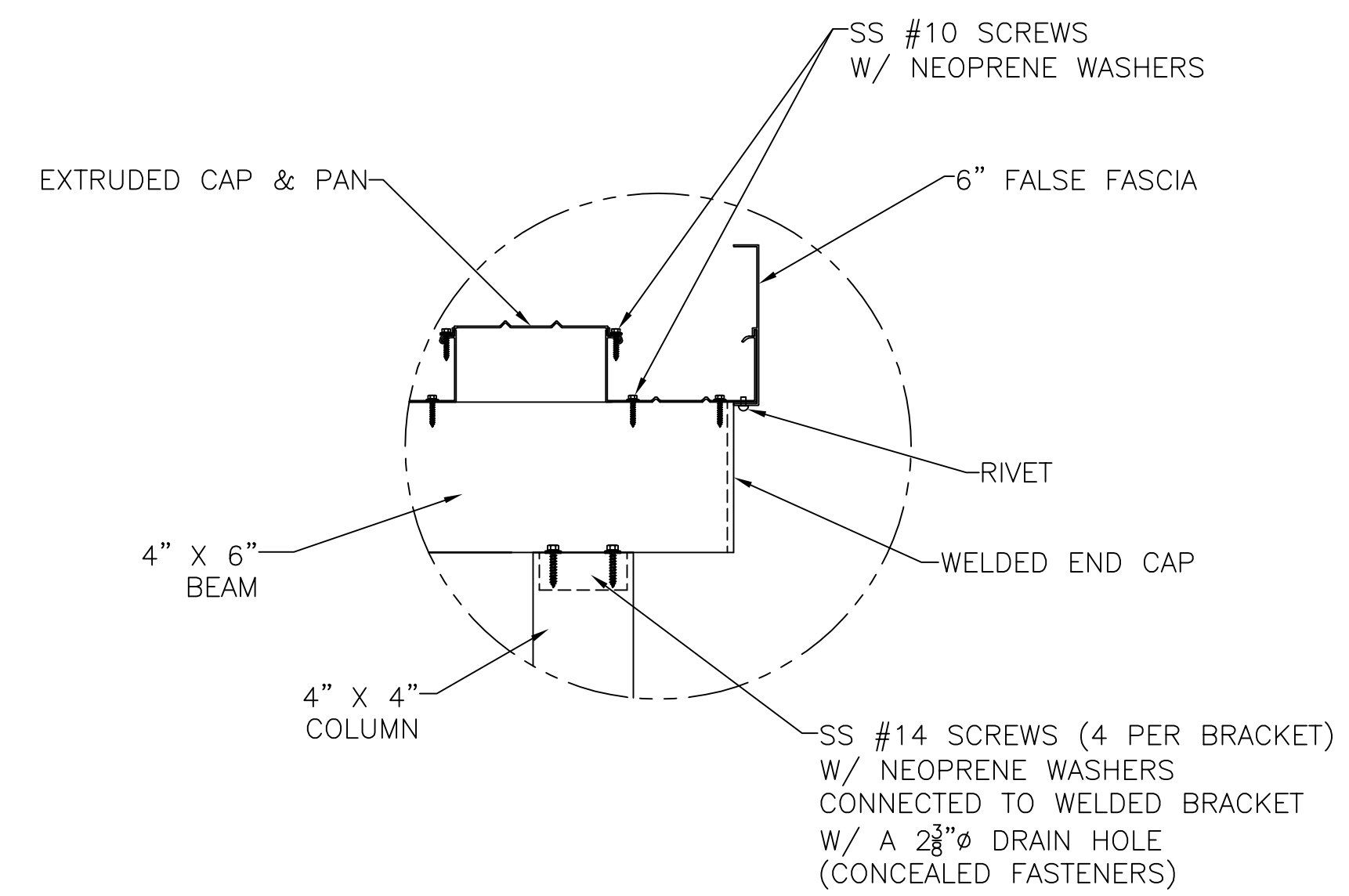
NOTES:

- CANOPY WIDTH NEEDS TO BE IN 6" INCREMENTS EX. 11'-6", 12'-6" WHEN DECKING RUNS LONG WAYS.
- HEIGHT RECOMMENDED NOT TO EXCEED 12'-0" OR WIDTH OF CANOPY, WHICH EVER IS LOWER.

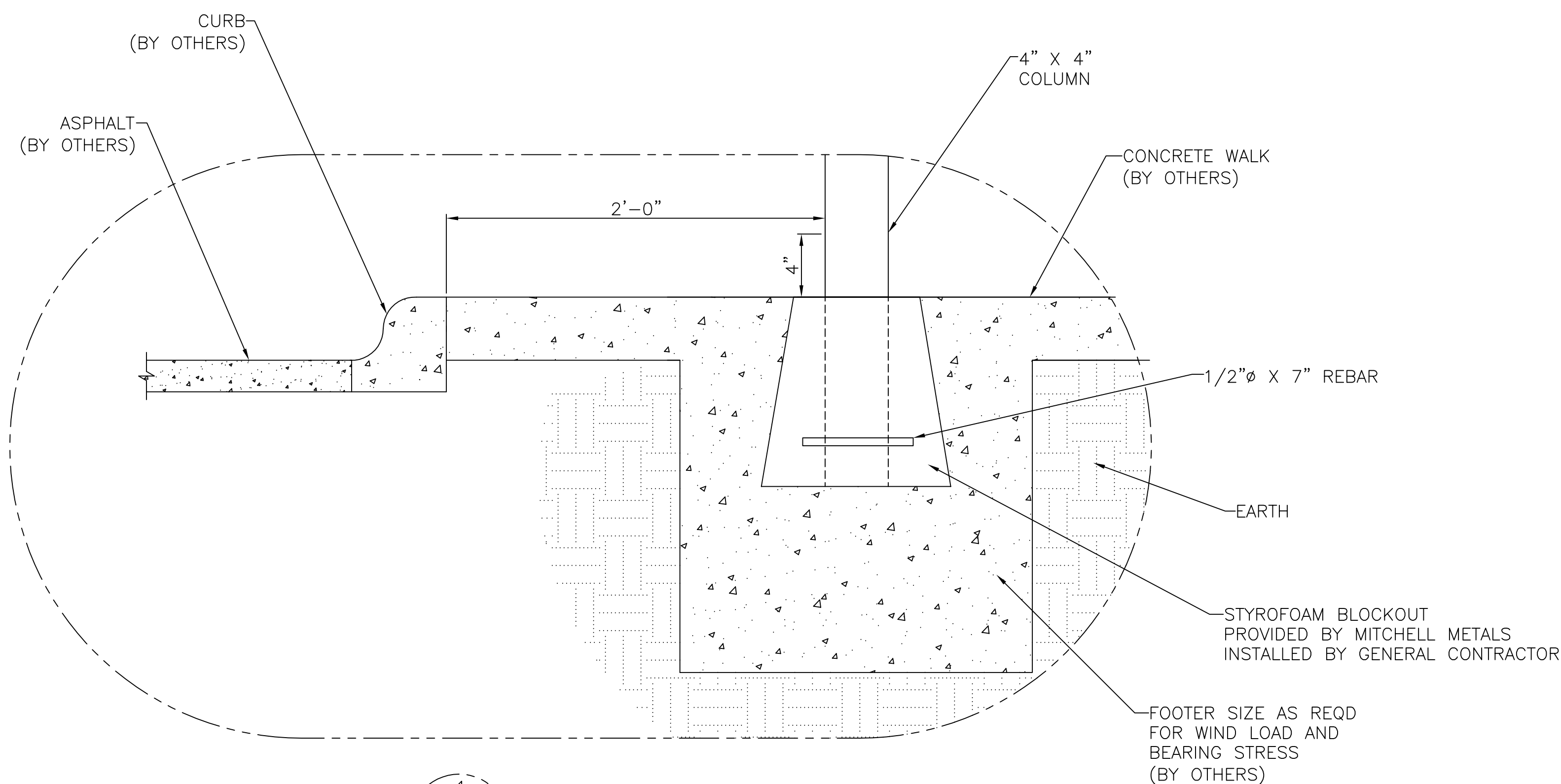


- NOTE:
- CAULK DEFLECTOR PLATE INSIDE OF POST

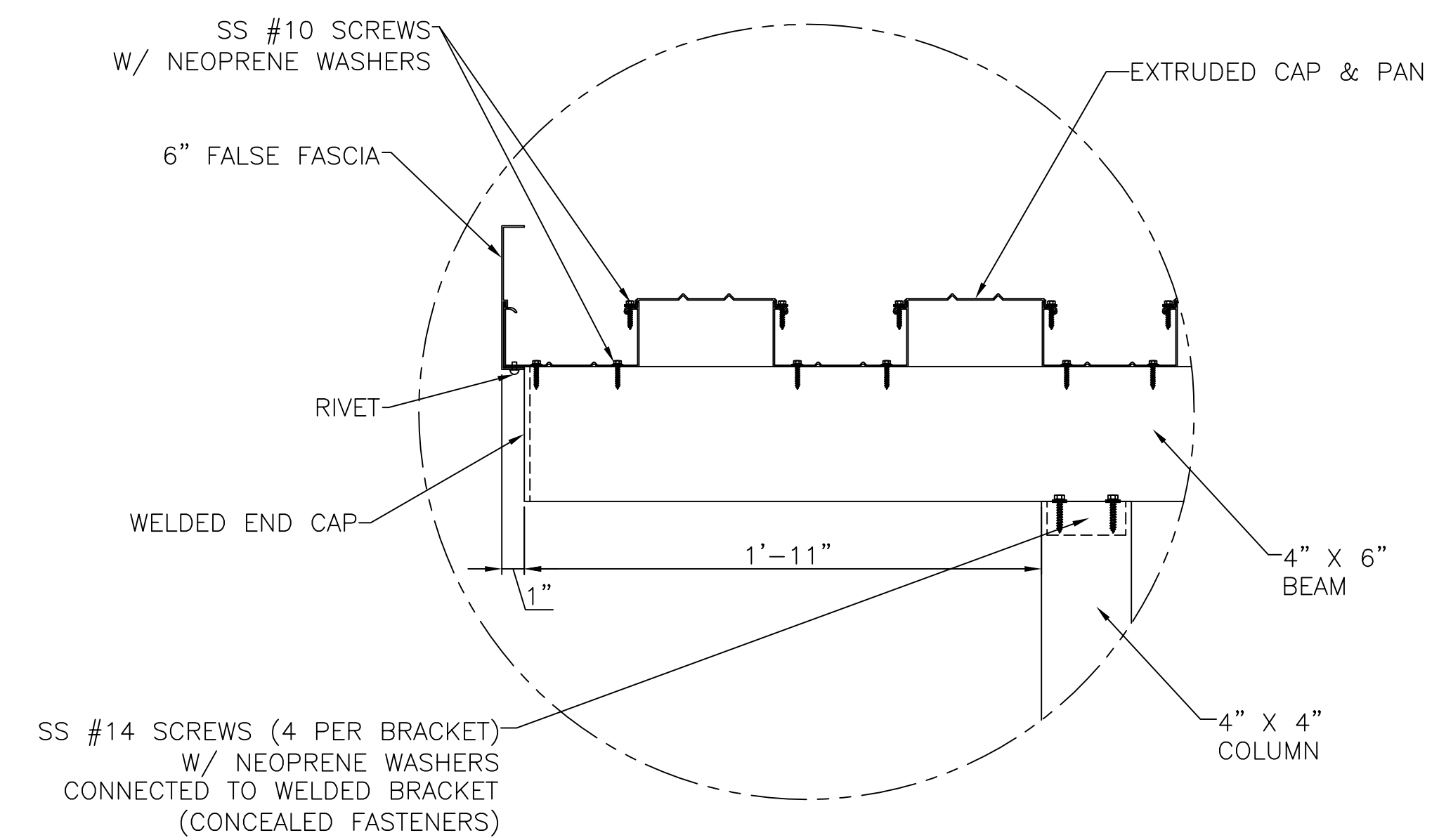
4  
DETAIL PAGE 1  
DETAIL VIEW OF CANOPY  
SCALE: 2" = 1'



3  
DETAIL PAGE 1  
DETAIL VIEW OF CANOPY  
SCALE: 2" = 1'



1  
DETAIL PAGE 1  
DETAIL VIEW OF CANOPY  
SCALE: 2" = 1'



2  
DETAIL PAGE 1  
DETAIL VIEW OF CANOPY  
SCALE: 2" = 1'

Revisions	#

General Contractor:	Arch:	SCALE: AS NOTED	DATE: 08/18/08
DRAWN BY: WCH	DRAWING NUMBER:	PAGE:	

**BUS/PARENT  
DROP OFF CANOPY  
DECKING RUN LONG**