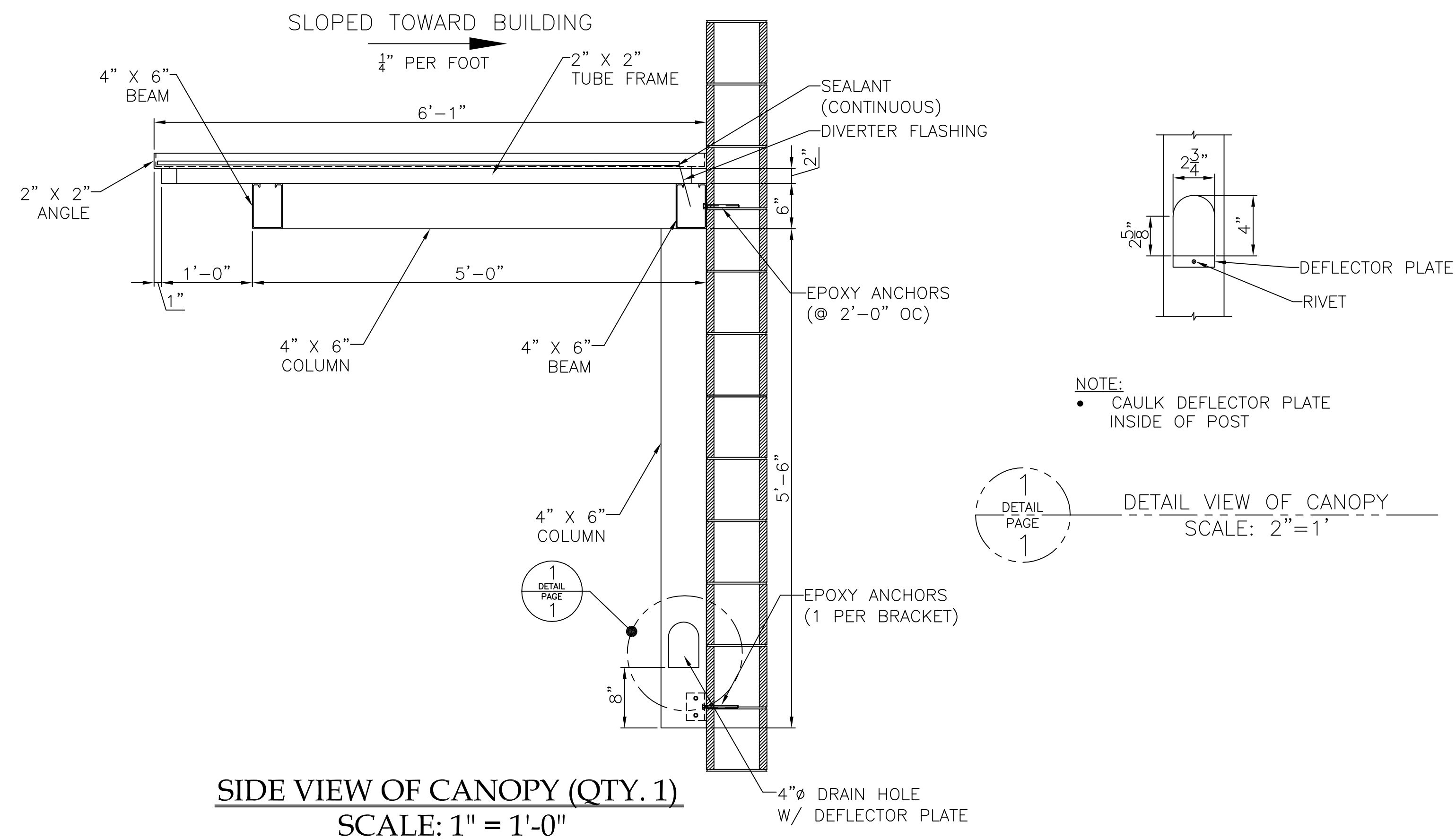
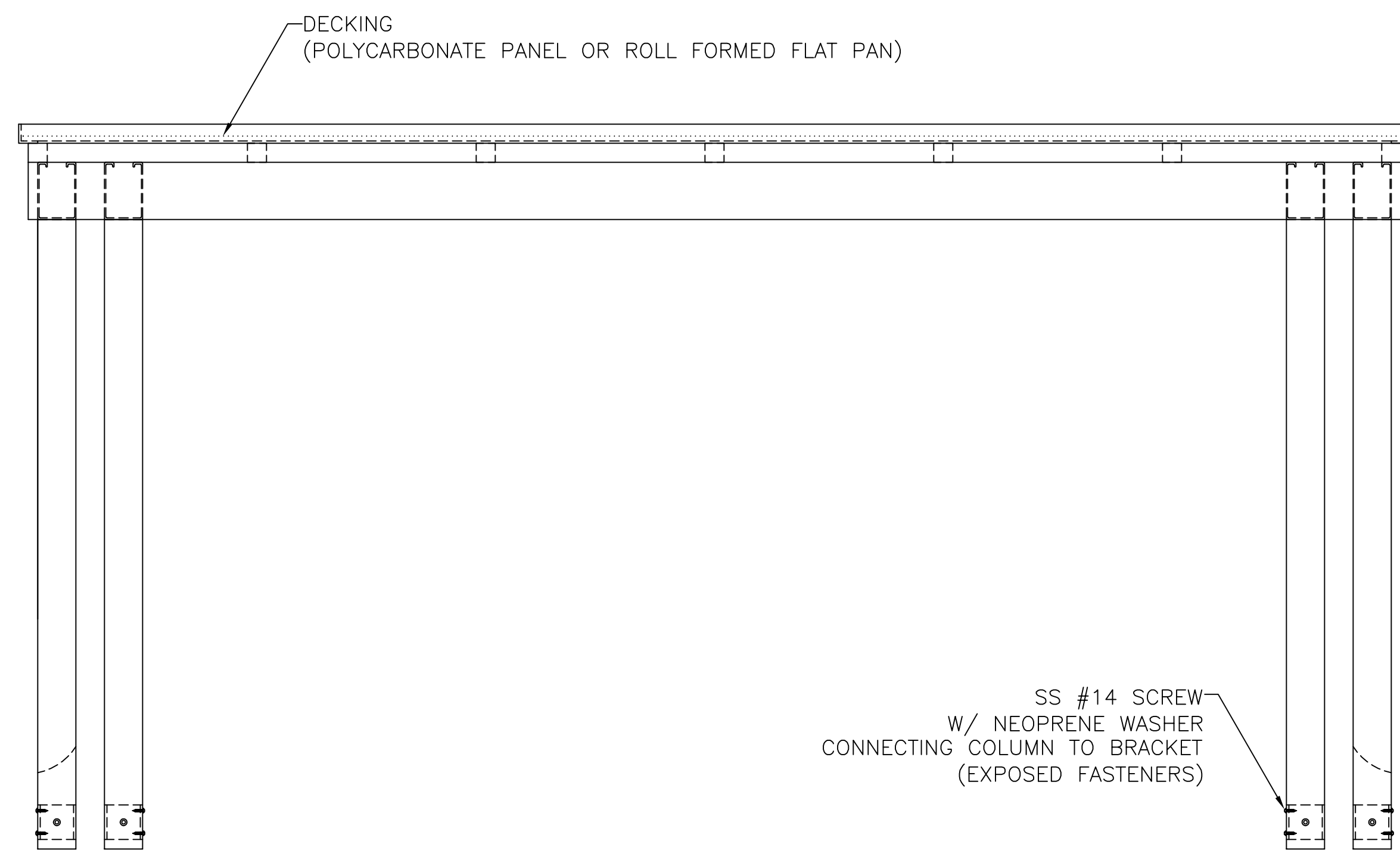


TOP VIEW OF ALUM. FRAME (QTY. 1)
SCALE: 1" = 1'-0"

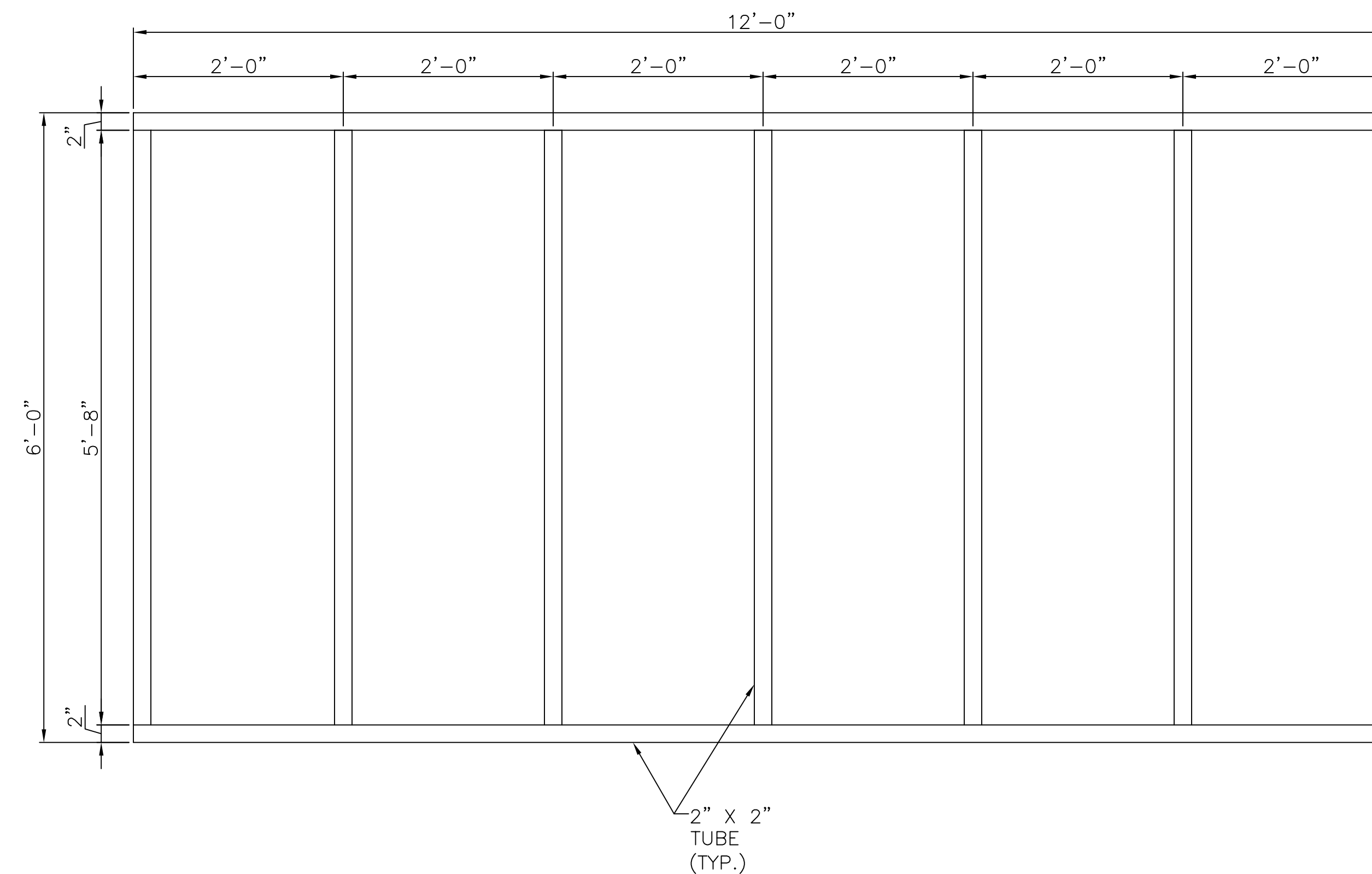


SIDE VIEW OF CANOPY (QTY. 1)
SCALE: 1" = 1'-0"

- NOTES:
- ALL FRAMING CONNECTIONS TO BE WELDED.
 - 2" X 2" TUBE FRAME WILL SIT ON TOP OF 4" X 6" ALUM. COLUMN & BEAM FRAME.



FRONT VIEW OF CANOPY (QTY. 1)
SCALE: 1" = 1'-0"



TOP VIEW OF 2" X 2" TUBE FRAME (QTY. 1)
SCALE: 1" = 1'-0"