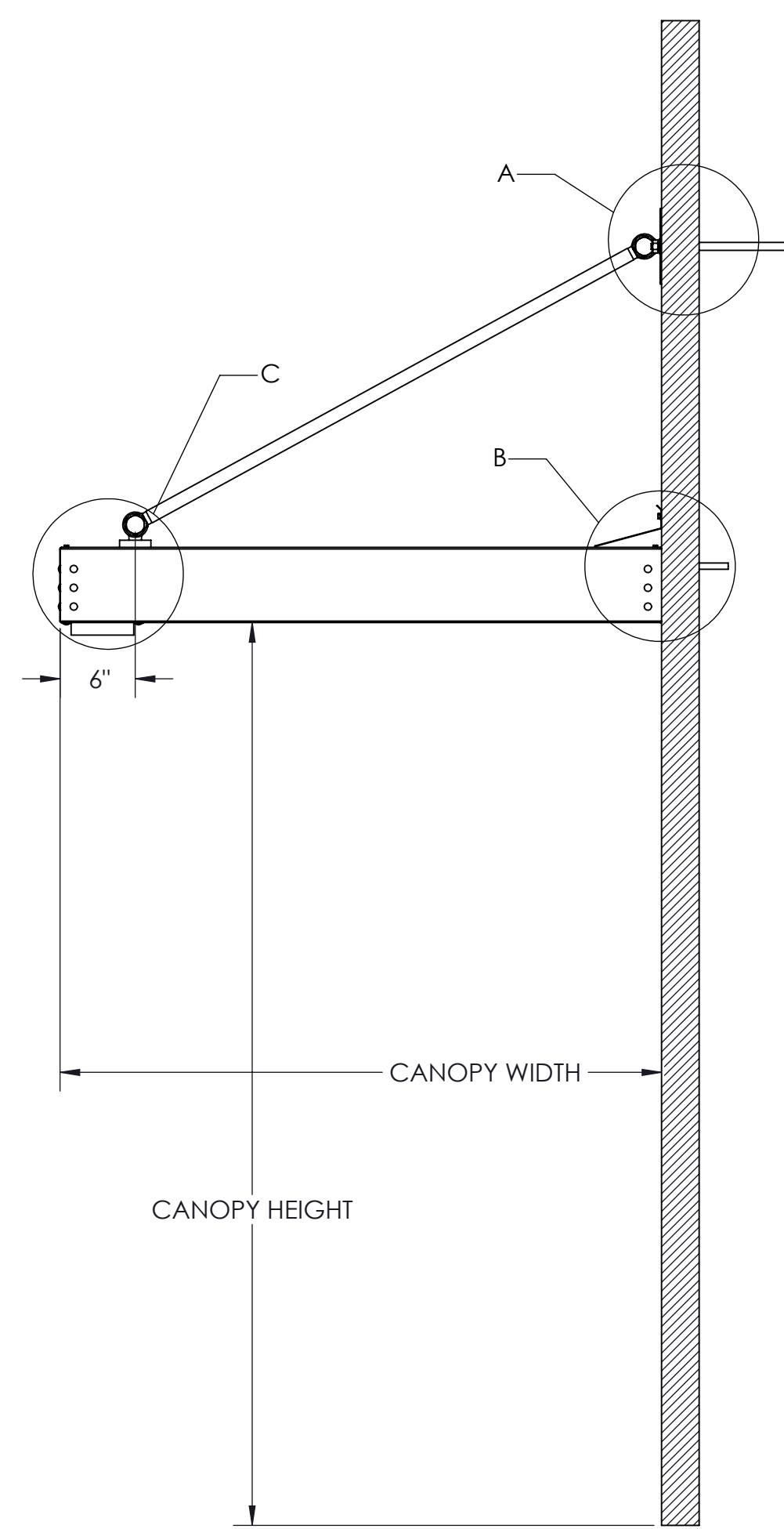
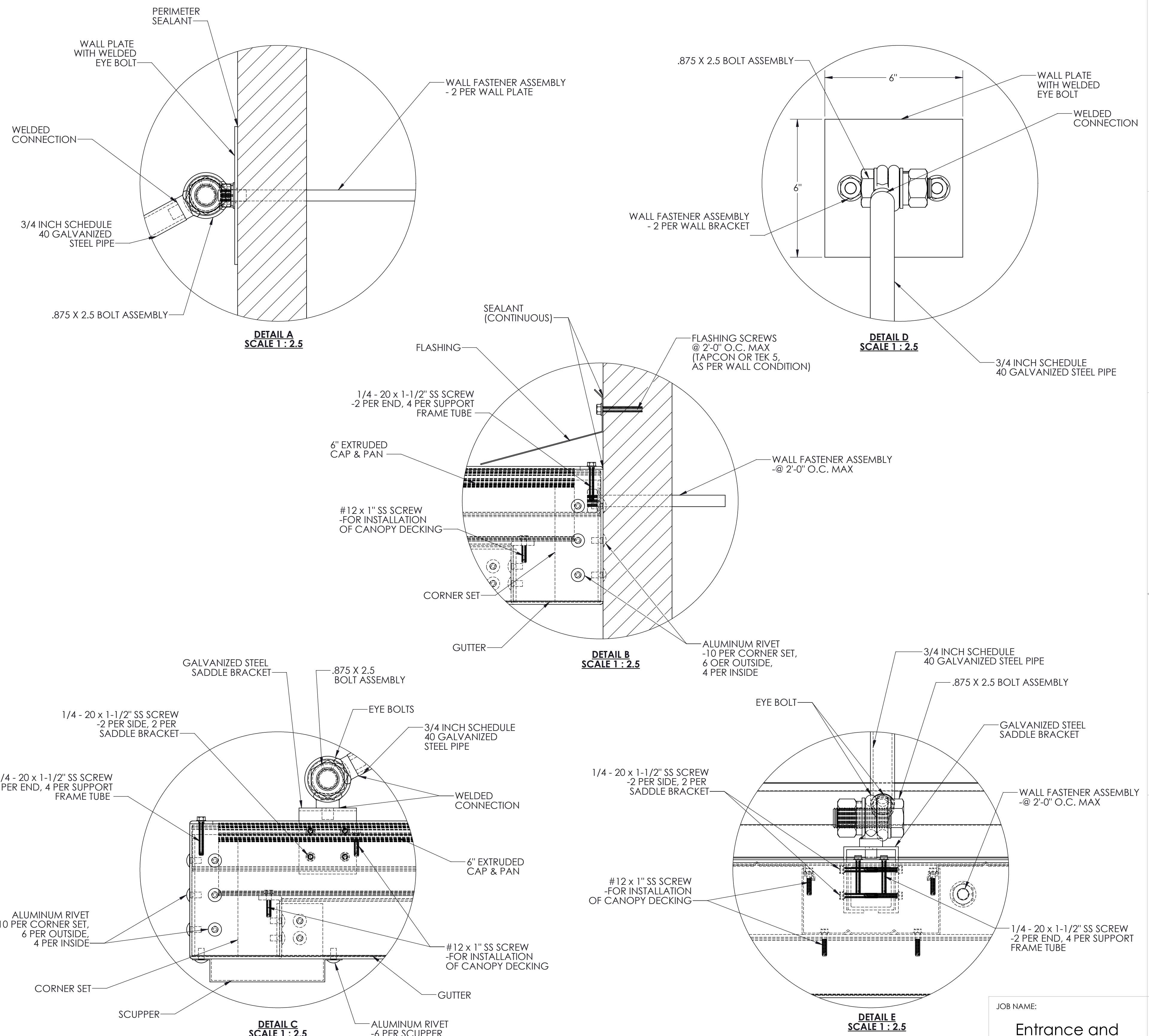


**ISOMETRIC VIEW
OF CANOPY**



**SECTION VIEW
OF CANOPY**



SPECIFICATIONS
Section 107312 - Overhead Supported Canopy-Round Rod

1.01 General Description of Work:
A. Work in this section shall include design and fabrication of pre-engineered aluminum canopies.
B. Canopies are to be fabricated and installed according to approved shop drawings.

1.02 Design Criteria:
A. International Building Code 2015
B. ASCE 7-10
C. Aluminum Design Manual 2015
D. Local governing codes and standards for site location

1.03 Materials:
A. All materials shall be extruded from aluminum unless indicated otherwise on the drawing.
B. Material sizes shall meet or exceed the design criteria on 1.02

1.04 Finishes:
A. Factory applied baked enamel to comply with AAMA 2603
B. Color selected from manufacturers standard colors

1.05 Manufacturers:
A. Mitchell Metals, LLC - www.mitchellmetals.net - 770-431-7300
B. Dittmer - www.dittdeck.com - 407-699-1755
C. See Specifications 2.1-C for conditions of equivalent systems by other manufacturers.

NOTES:
• ALL FASTENERS TO BE 300 SERIES STAINLESS STEEL OR ALUMINUM

JOB NAME:
Entrance and Overhead Supported Canopies

TITLE:
Overhead Supported Canopy-Round Rod

REVISION # :
DATE: 8/17/2017 SHEET 1 OF 1