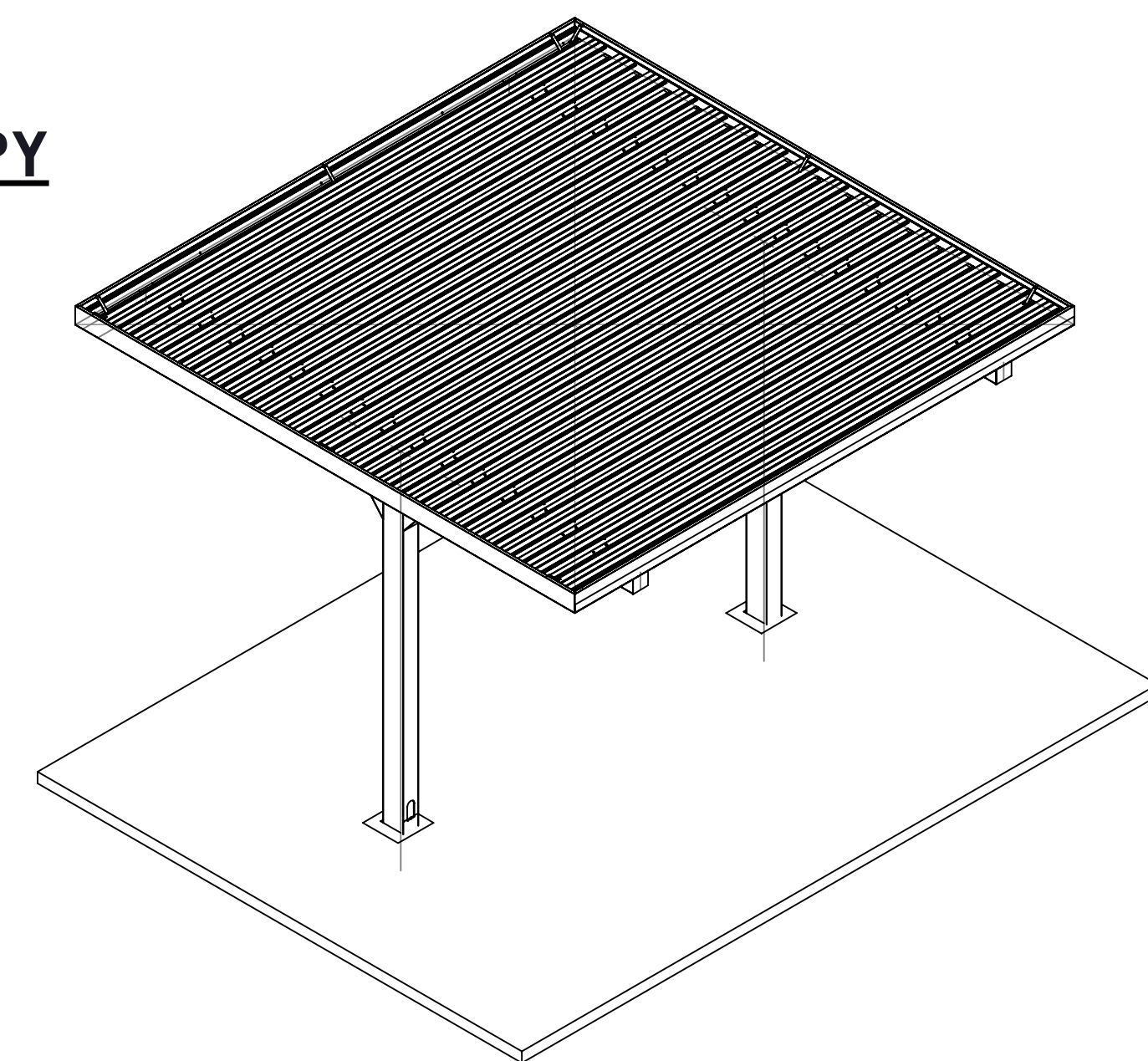
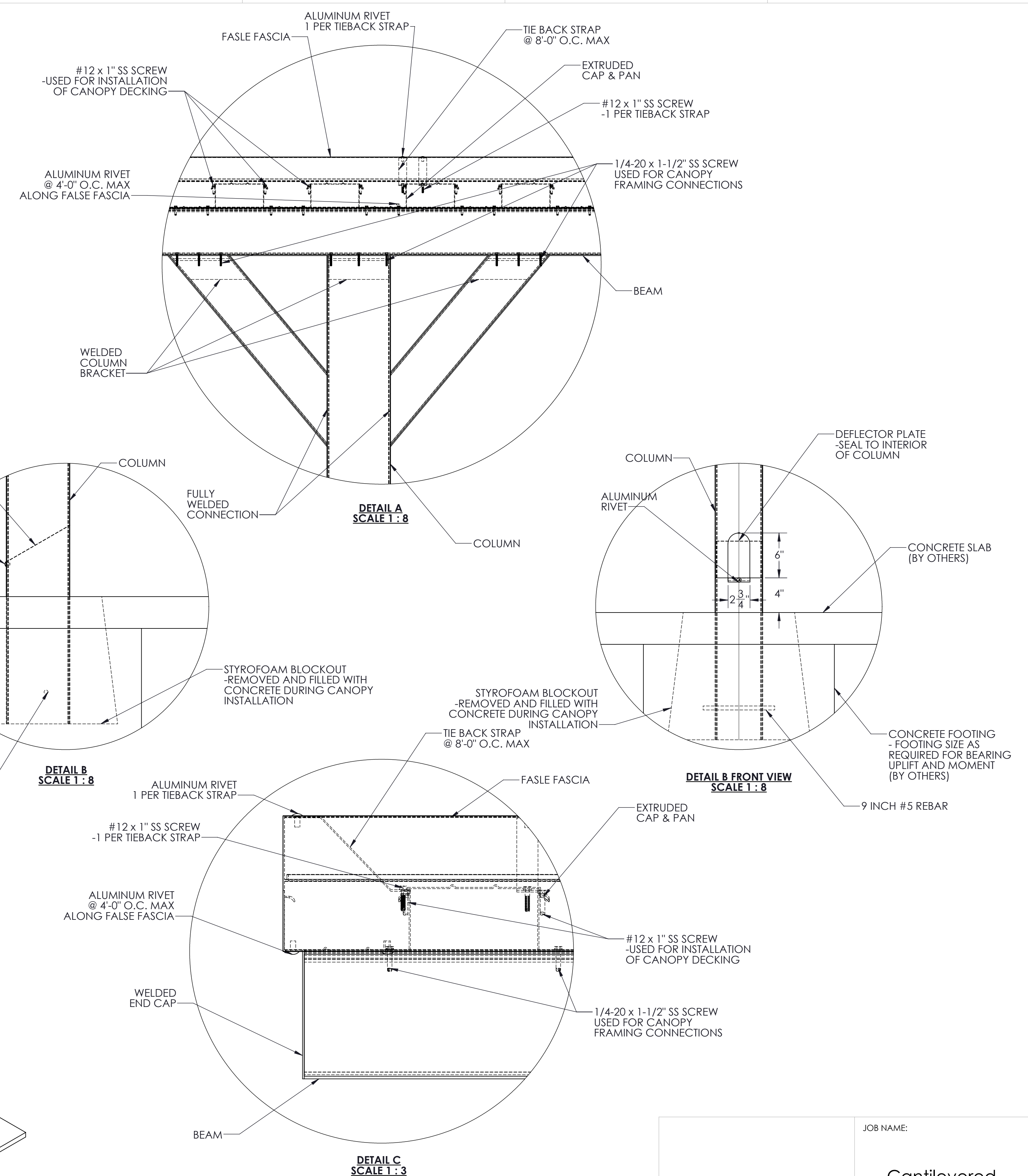


**SECTION VIEW OF CANOPY**



**ISOMETRIC VIEW OF CANOPY**



- NOTES:
- **DC** = DRAINING COLUMN (If Applicable)
  - **HEIGHT RECOMMENDED NOT TO EXCEED 12'-0" OR WIDTH OF CANOPY, WHICH EVER IS LOWER**
  - **ALL FASTENERS TO BE 300 SERIES STAINLESS STEEL OR ALUMINUM**

**SPECIFICATIONS**  
 Section 107301 - Cantilevered Walkway Cover

1.01 General Description of Work:  
 A. Work in this section shall include design and fabrication of pre-engineered aluminum canopies.  
 B. Canopies are to be fabricated and installed according to approved shop drawings.

1.02 Design Criteria:  
 A. International Building Code 2015  
 B. ASCE 7-10  
 C. Aluminum Design Manual 2015  
 D. Local governing codes and standards for site location

1.03 Materials:  
 A. All materials shall be extruded from aluminum unless indicated otherwise on the drawing.  
 B. Material sizes shall meet or exceed the design criteria on 1.02

1.04 Finishes:  
 A. Factory applied baked enamel to comply with AAMA 2603  
 B. Color selected from manufacturers standard colors

1.05 Manufacturers:  
 A. Mitchell Metals, LLC - www.mitchellmetals.net - 770-431-7300  
 B. Dittmer - www.dittdeck.com - 407-699-1755  
 C. See Specifications 2.1-C for conditions of equivalent systems by other manufacturers.

JOB NAME:	
Cantilevered Walkway Cover	
TITLE: Double-Sided Cantilevered Canopy	
REVISION # :	
DATE: 8/16/2017	SHEET 1 OF 1

STAMP