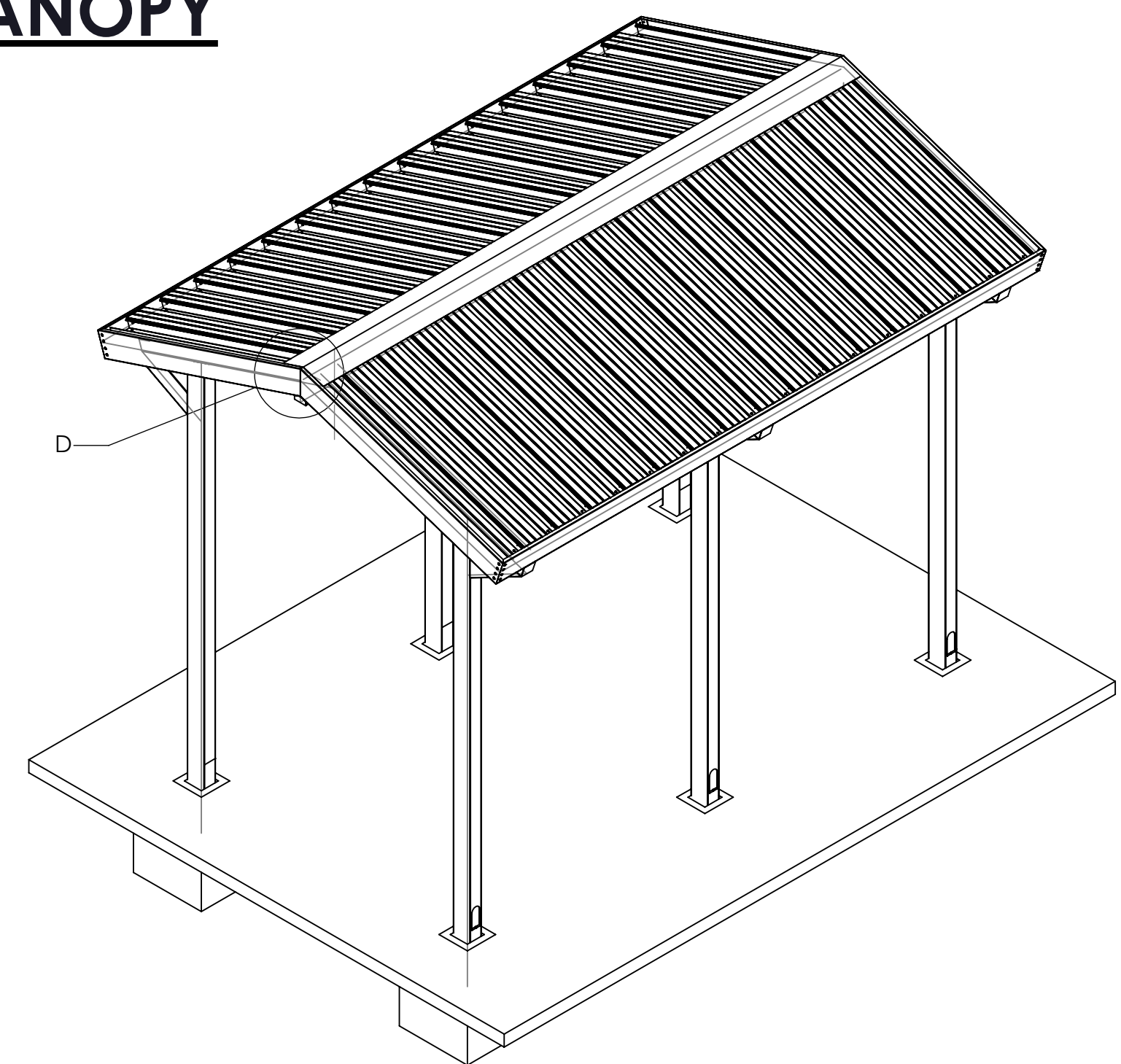
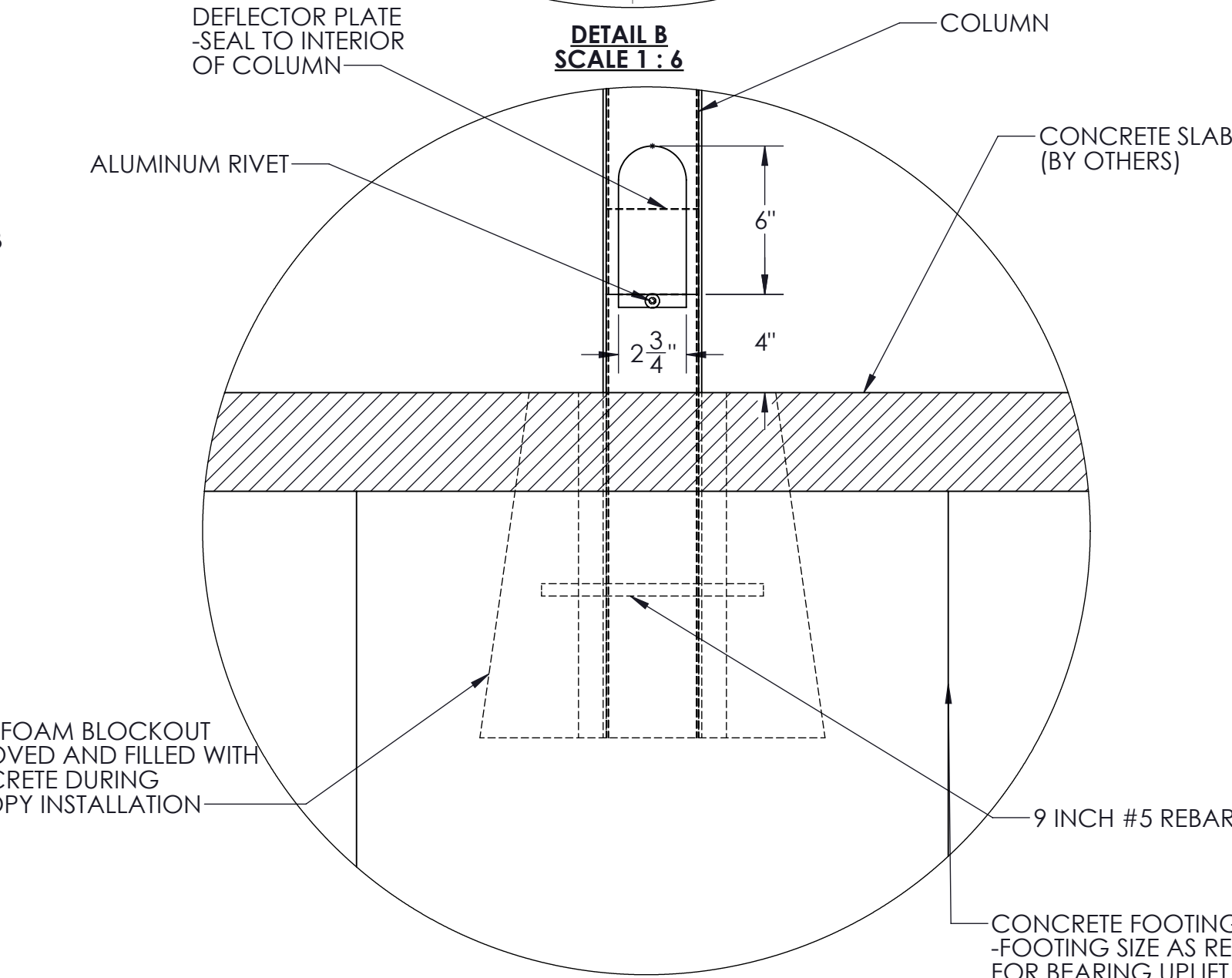
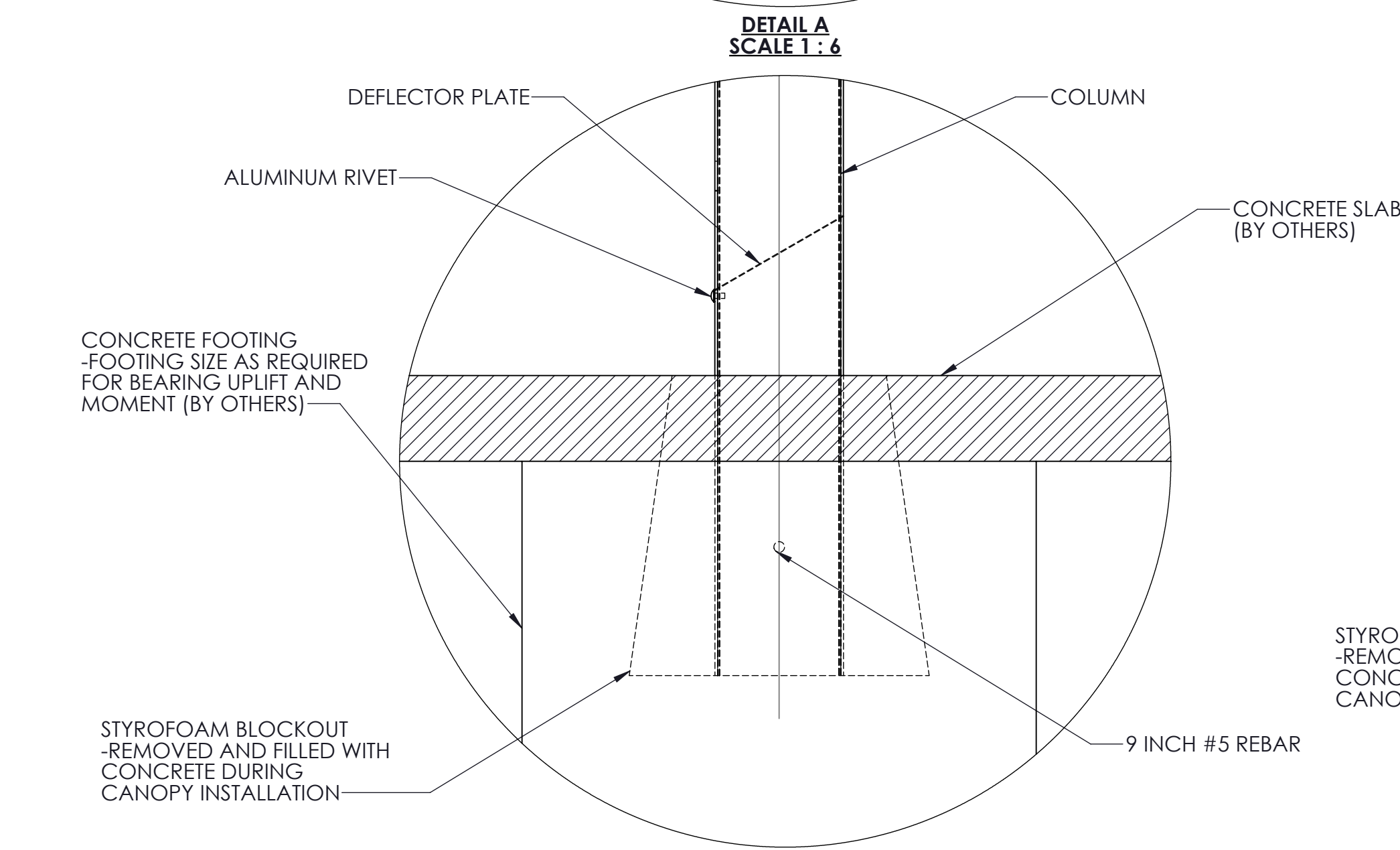
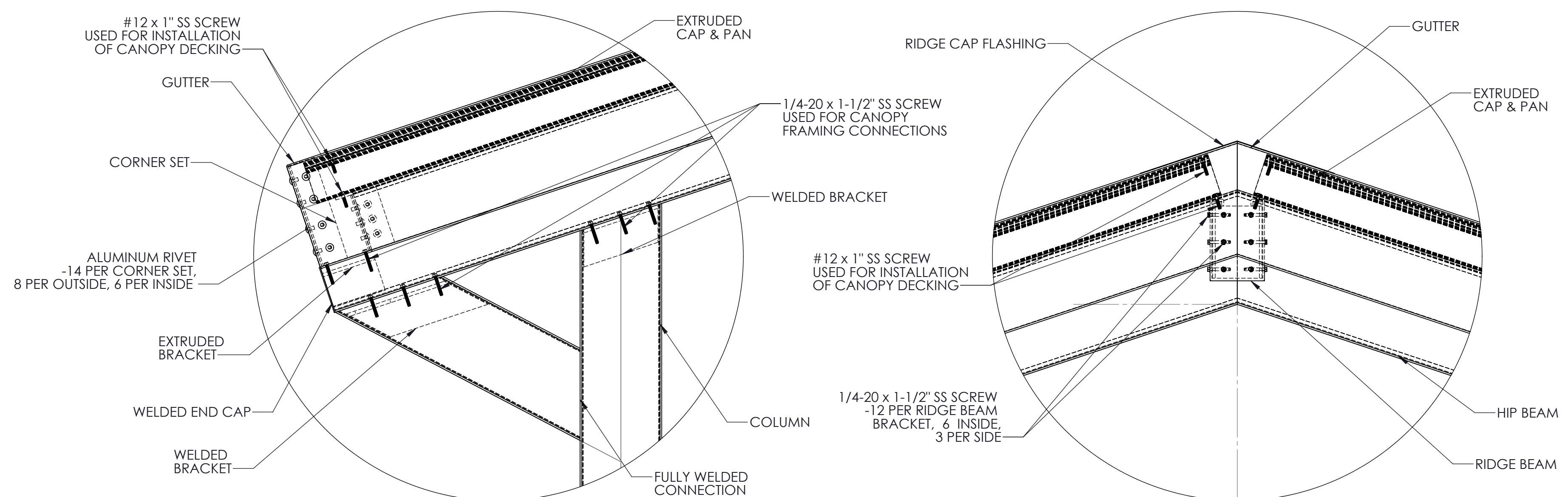
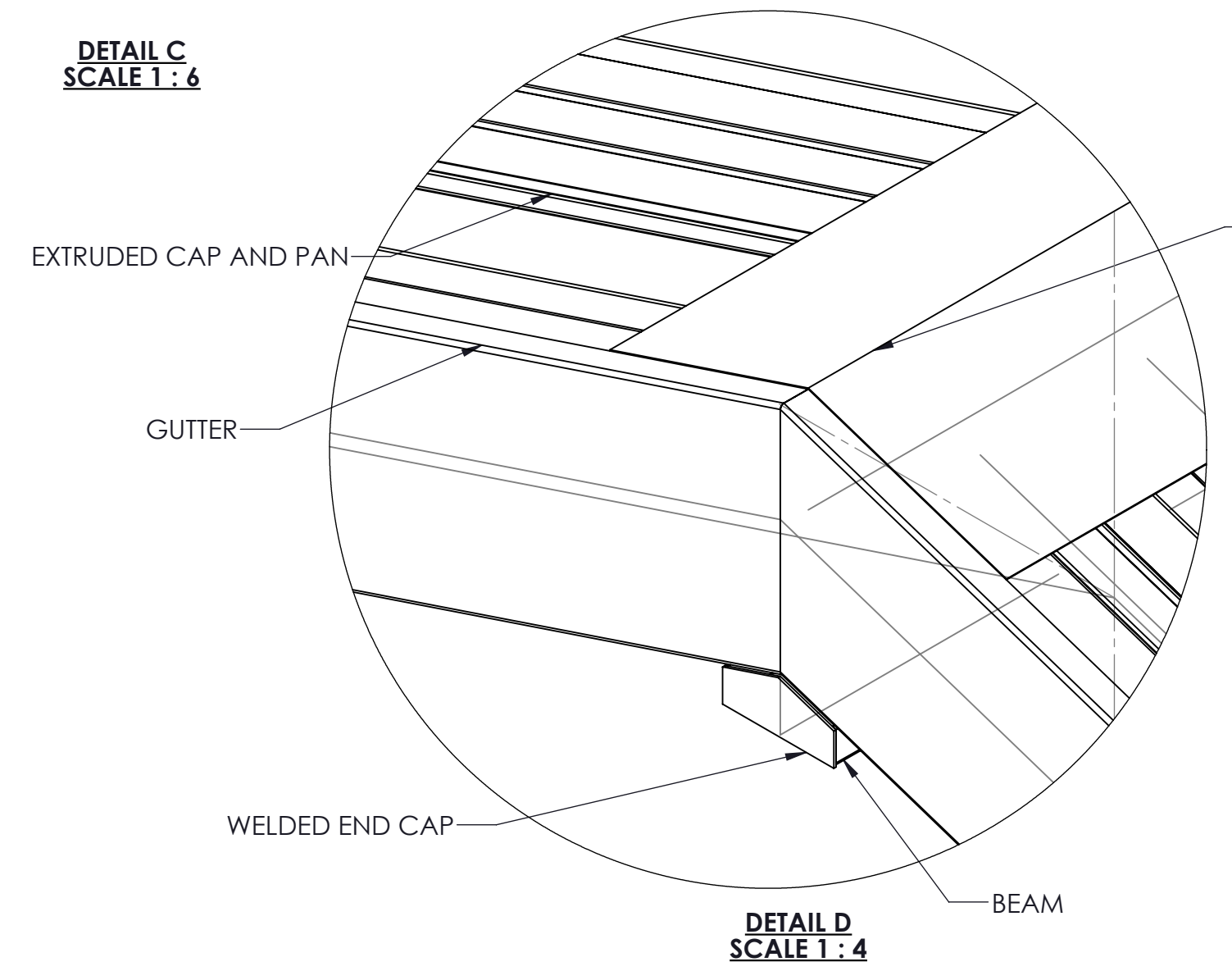


**SECTION VIEW OF CANOPY**



**ISOMETRIC VIEW OF CANOPY**



- NOTES:
- [DC] = DRAINING COLUMN (If Applicable)
  - ALL FASTENERS TO BE 300 SERIES STAINLESS STEEL OF ALUMINUM

**SPECIFICATIONS**  
 Section 107300 - Aluminum Walkway Cover

**1.01 General Description of Work:**  
 A. Work in this section shall include design and fabrication of pre-engineered aluminum canopies.  
 B. Canopies are to be fabricated and installed according to approved shop drawings.

**1.02 Design Criteria:**  
 A. International Building Code 2015  
 B. ASCE 7-10  
 C. Aluminum Design Manual 2015  
 D. Local governing codes and standards for site location

**1.03 Materials:**  
 A. All materials shall be extruded from aluminum unless indicated otherwise on the drawing.  
 B. Material sizes shall meet or exceed the design criteria on 1.02

**1.04 Finishes:**  
 A. Factory applied baked enamel to comply with AAMA 2603  
 B. Color selected from manufacturers standard colors

**1.05 Manufacturers:**  
 A. Mitchell Metals, LLC -www.mitchellmetals.net - 770-431-7300  
 B. Dittmer - www.dittdeck.com - 407-699-1755  
 C. See Specifications 2.1-C for conditions of equivalent systems by other manufacturers.

JOB NAME:	
Gable Canopy	
TITLE:	
Gabled Canopy No Cross Beams	
REVISION # :	
DATE: 8/16/2017	SHEET 1 OF 1

STAMP