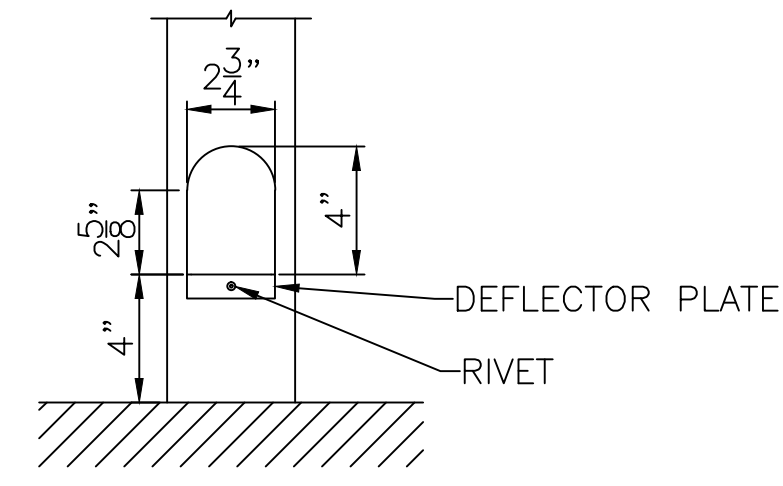


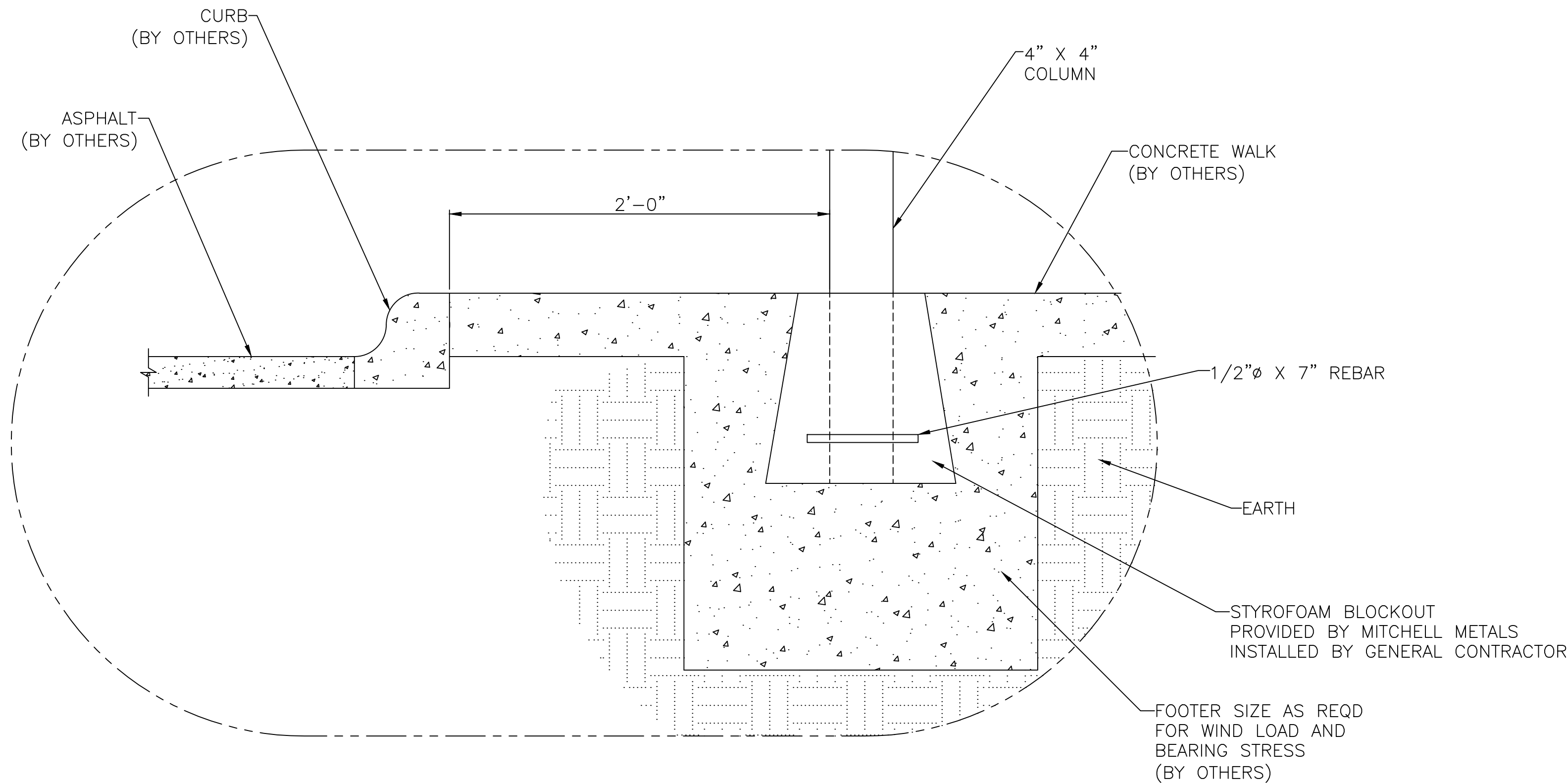
**A**  
DETAIL PAGE 1  
SECTION VIEW OF CANOPY  
SCALE: 1/2"=1'

- NOTES:**
- HEIGHT RECOMMENDED NOT TO EXCEED 12'-0" OR WIDTH OF CANOPY, WHICH EVER IS LOWER.
  - RECOMMENDED TO USE ONLY WHEN WIDTH EXCEEDS 13'-0" (DUE TO LINEAL BEAMS)

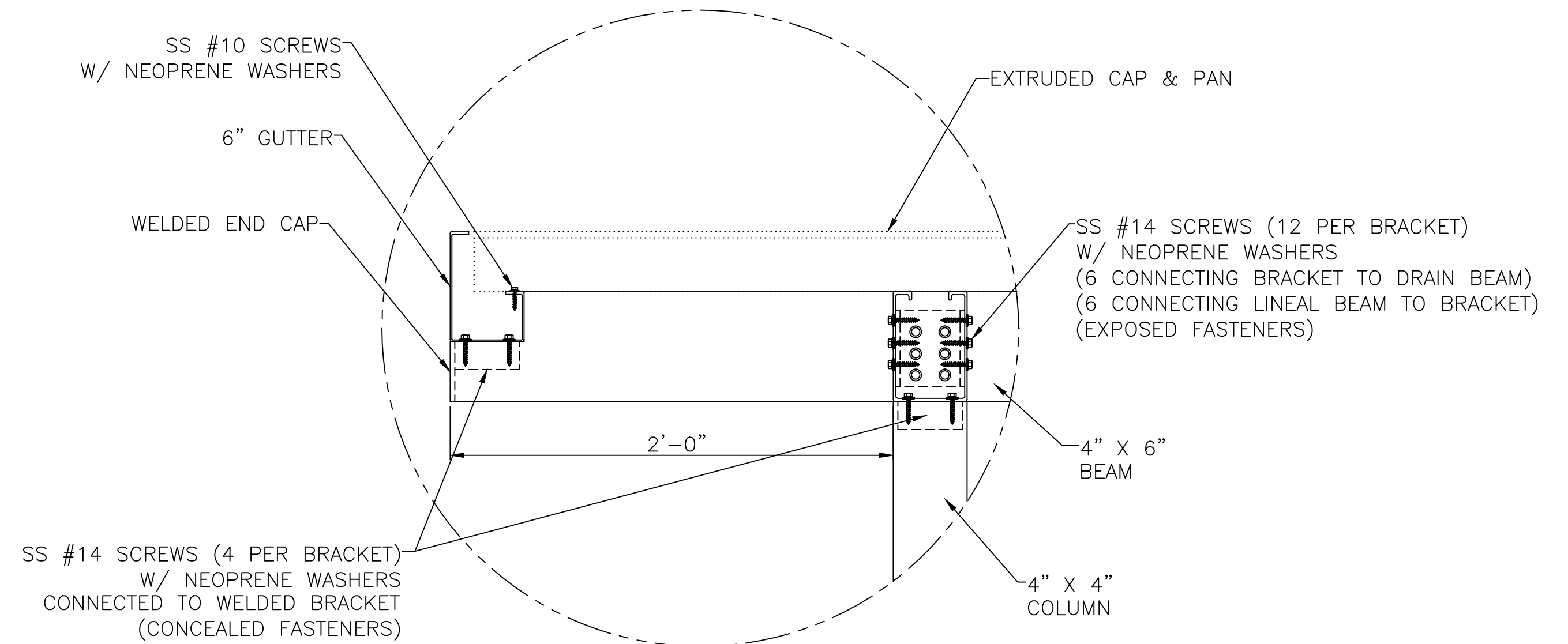


- NOTE:**
- CAULK DEFLECTOR PLATE INSIDE OF POST

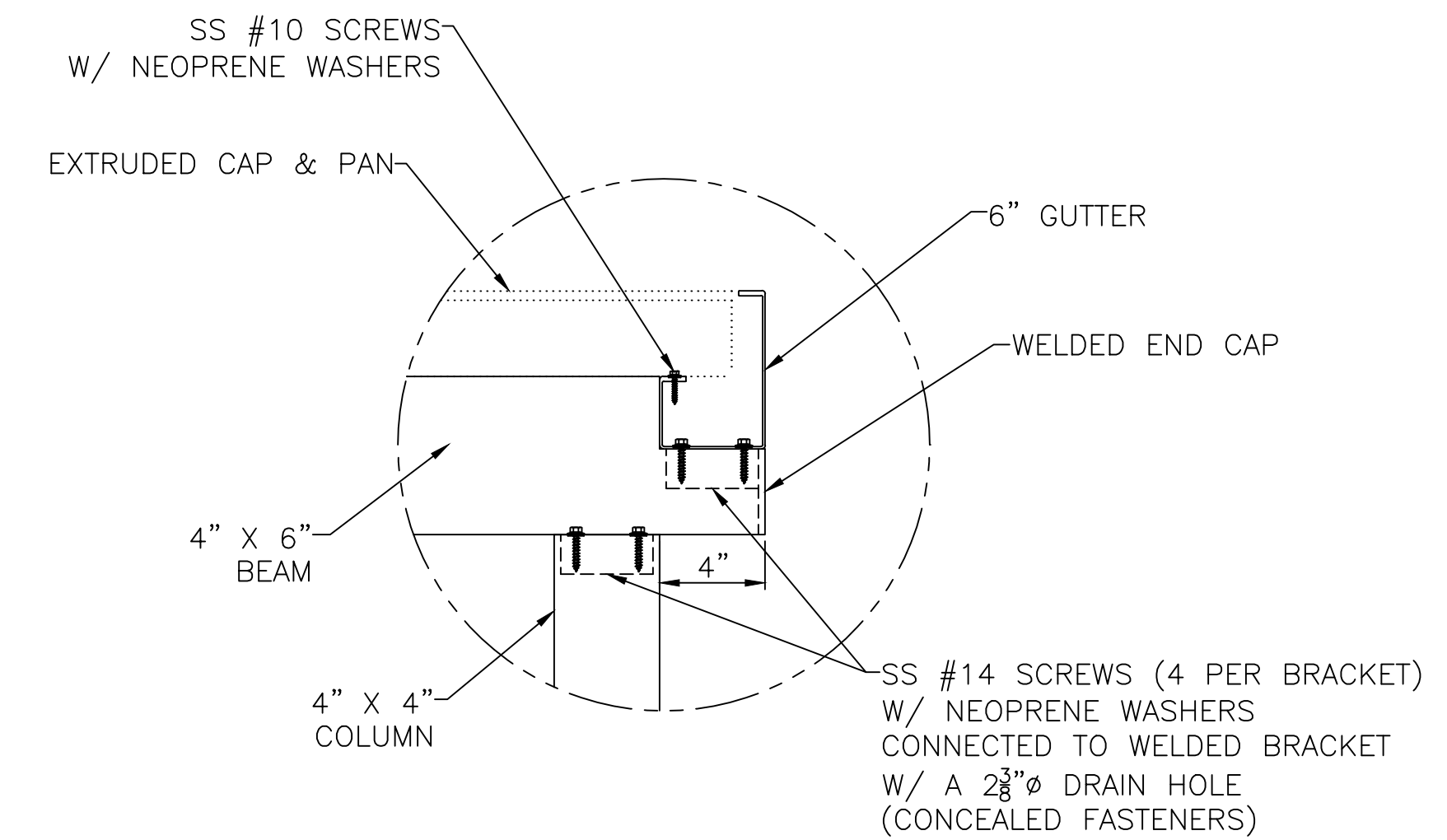
**4**  
DETAIL PAGE 1  
DETAIL VIEW OF CANOPY  
SCALE: 2"=1'



**1**  
DETAIL PAGE 1  
DETAIL VIEW OF CANOPY  
SCALE: 2"=1'



**2**  
DETAIL PAGE 1  
DETAIL VIEW OF CANOPY  
SCALE: 2"=1'



**3**  
DETAIL PAGE 1  
DETAIL VIEW OF CANOPY  
SCALE: 2"=1'

**Specifications**  
Section 10530-Aluminum Canopies

- 1.01 General Description of Work**  
A. Work shall include design and fabrication of pre-engineered aluminum canopies  
B. Canopies are to be fabricated and installed according to approved shop drawings
- 1.02 Design Criteria:**  
A. International Building Code 2012  
B. ASCE 7-10  
C. Aluminum Design Manual 2010  
D. Local Governing Codes and standards for site location
- 1.03 Materials:**  
A. All materials shall be extruded aluminum unless indicated otherwise on the drawing  
B. Material sizes shall meet or exceed the design criteria on 1.02
- 1.04 Finishes:**  
A. Factory applied baked enamel to comply with AAMA 2603  
B. Color selected from manufacturers standard colors
- 1.05 Manufacturers:**  
A. Mitchell Metals, LLC.-www.mitchellmetals.net-770-431-7300  
B. Dittmer-www.dittdeck.com-407-699-1755  
C. Superior Metal Products-www.superiormetalproducts.com-205-945-1200



1761 McCoba Drive, Suite A, Smyrna, GA 30080  
Phone: (770) 431-7300 Fax: (770) 431-7305

Revisions  
#

General Contractor:	Arch:	SCALE: AS NOTED	DATE: 08/18/08
DRAWN BY: WCH	DRAWING NUMBER:	PAGE:	

**BUS/PARENT  
DROP OFF CANOPY  
W/ LINEAL BEAMS**