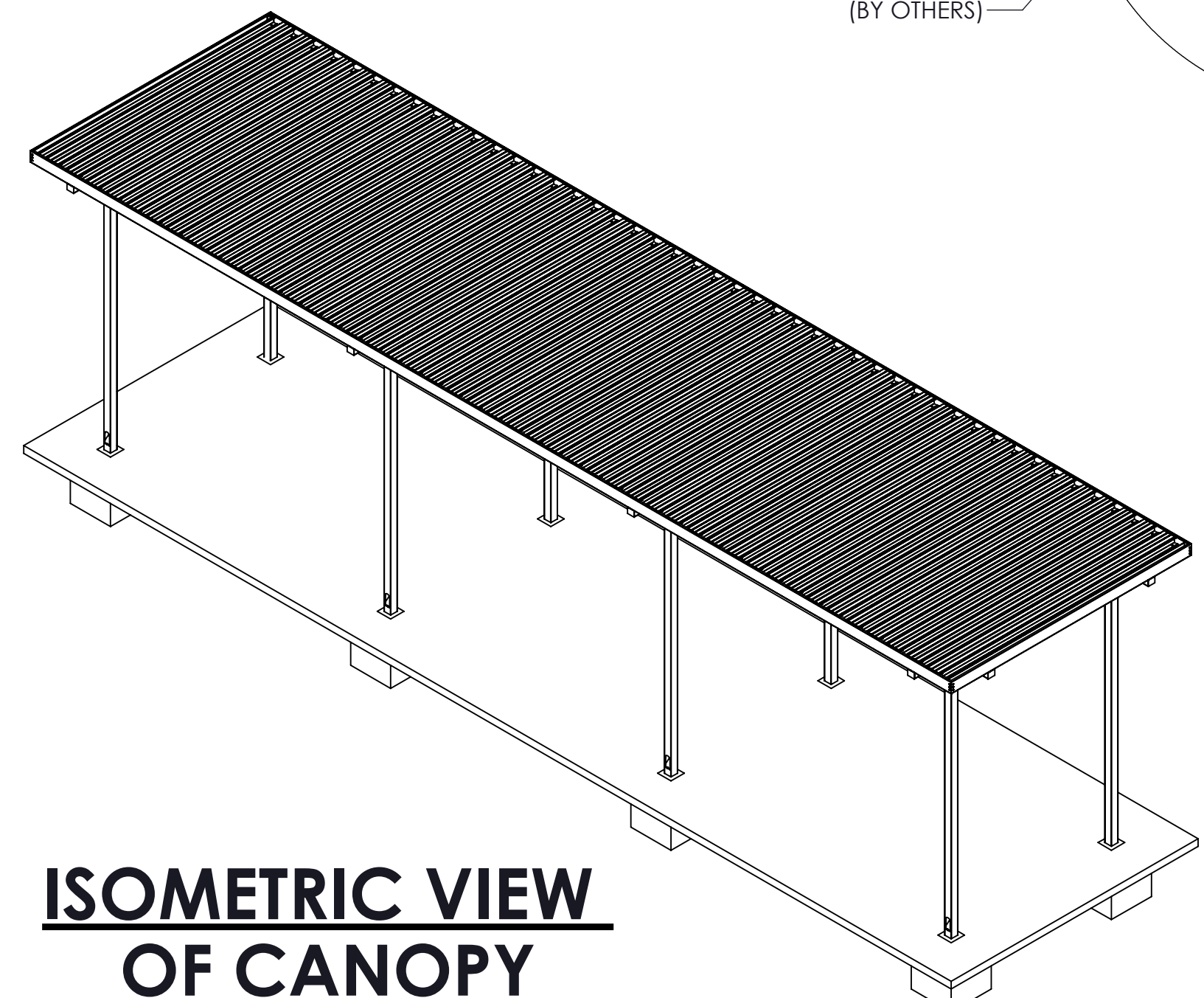
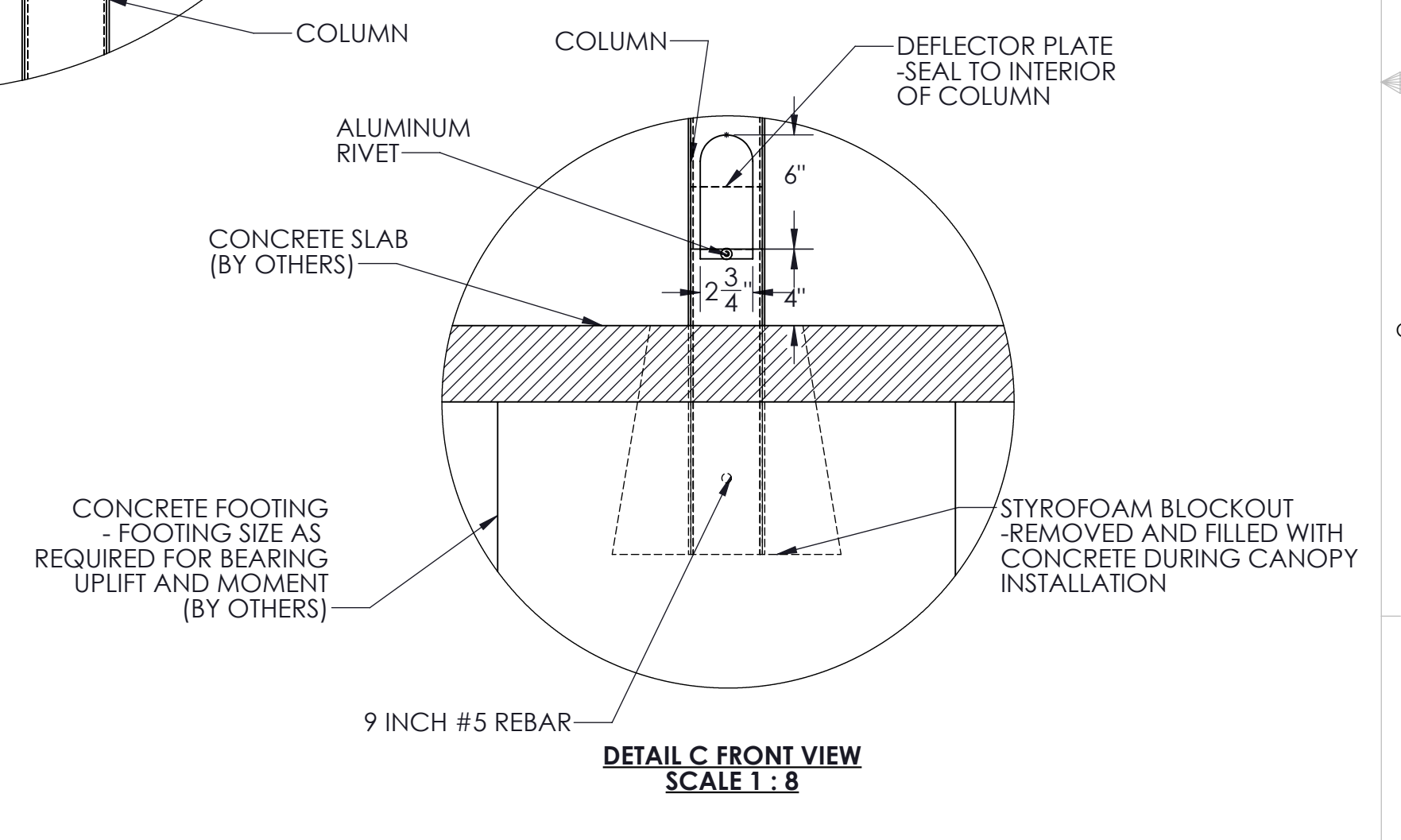
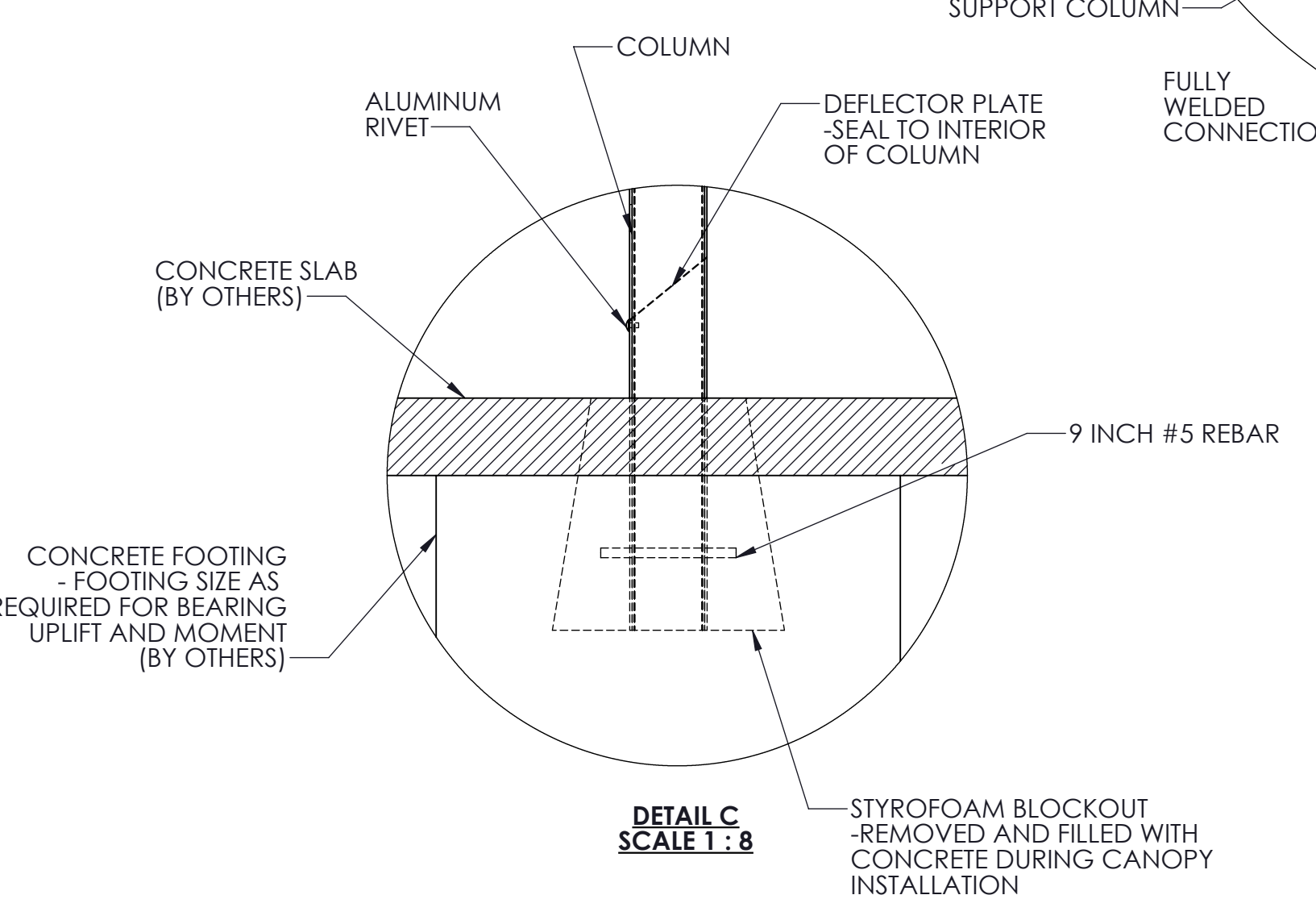
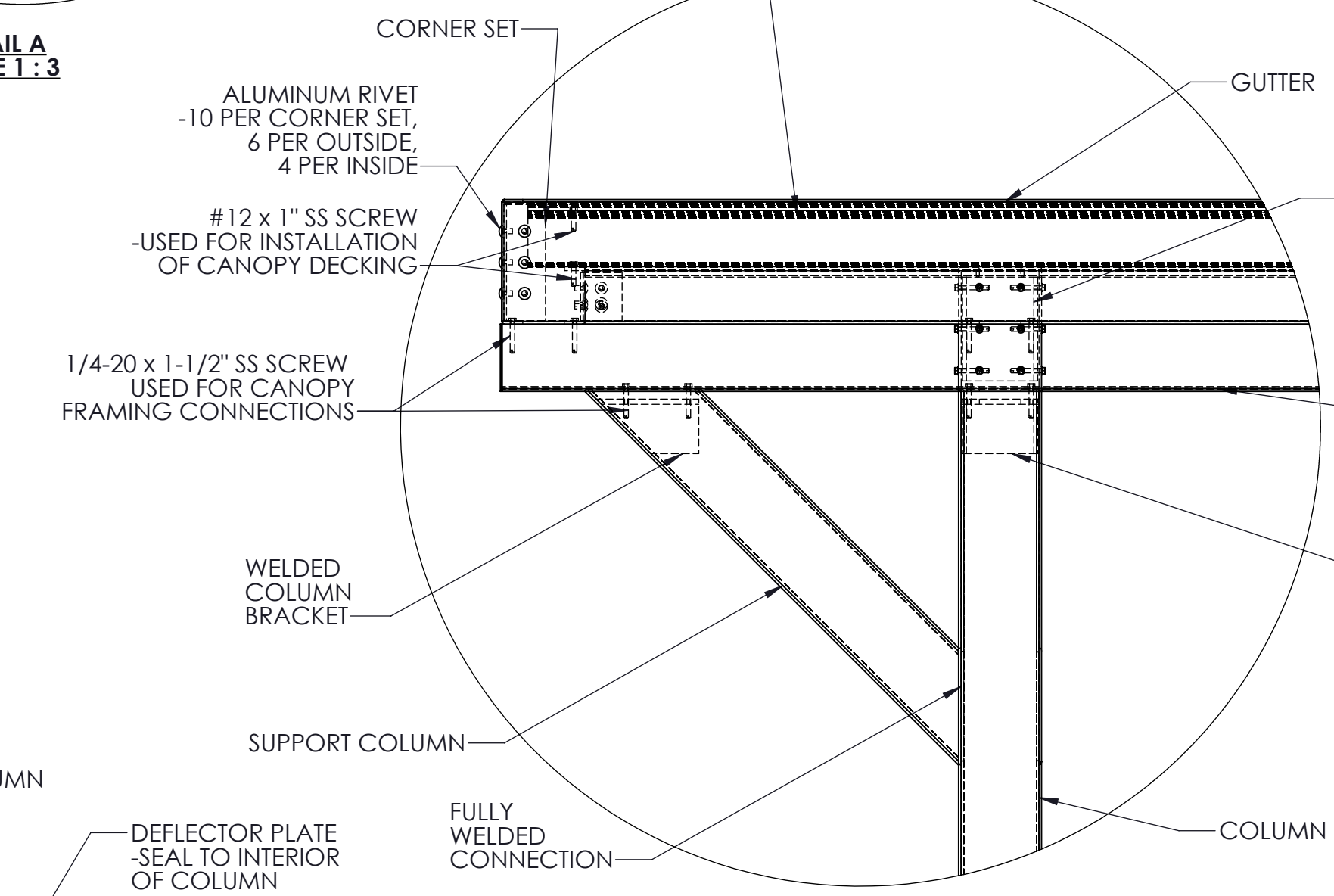
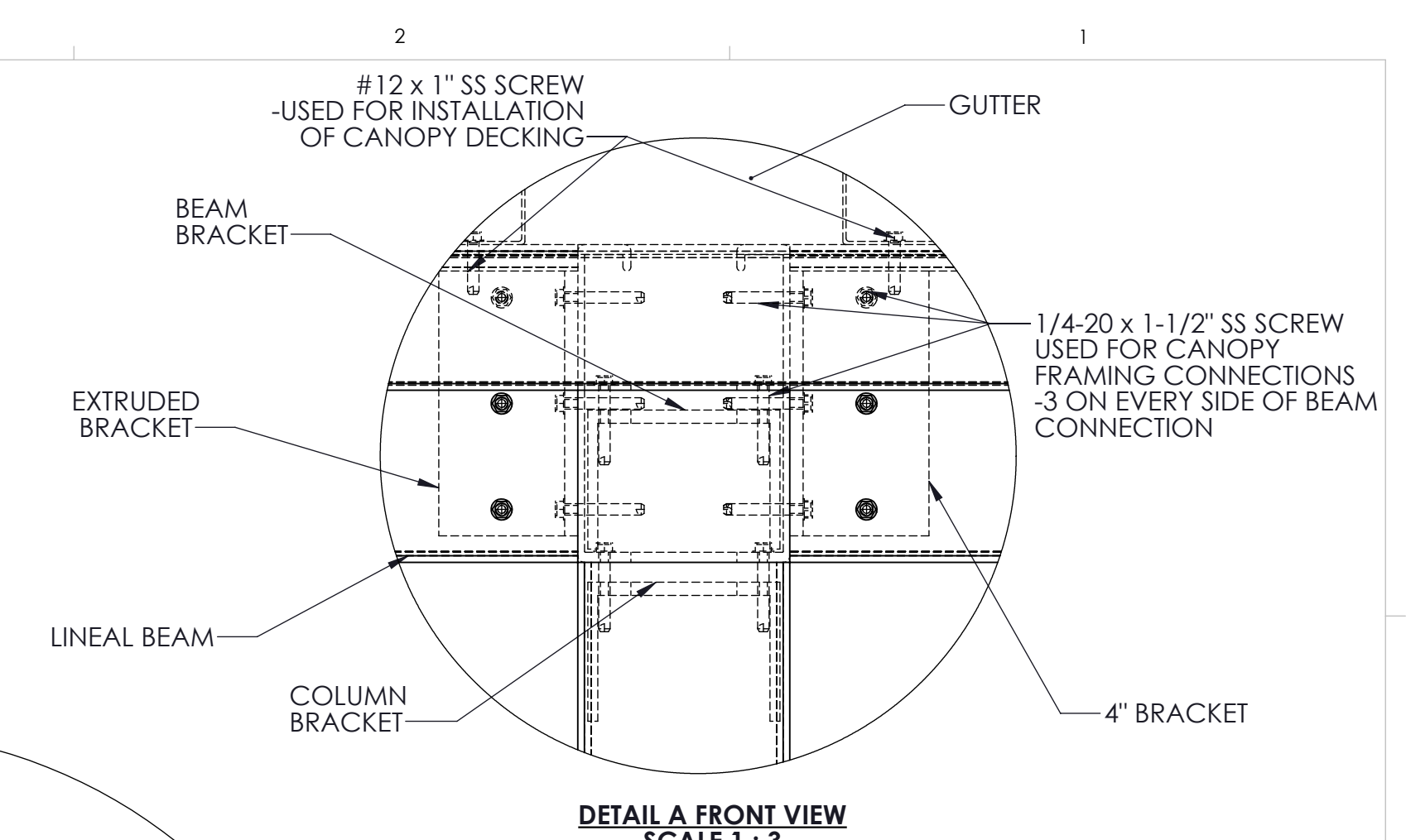
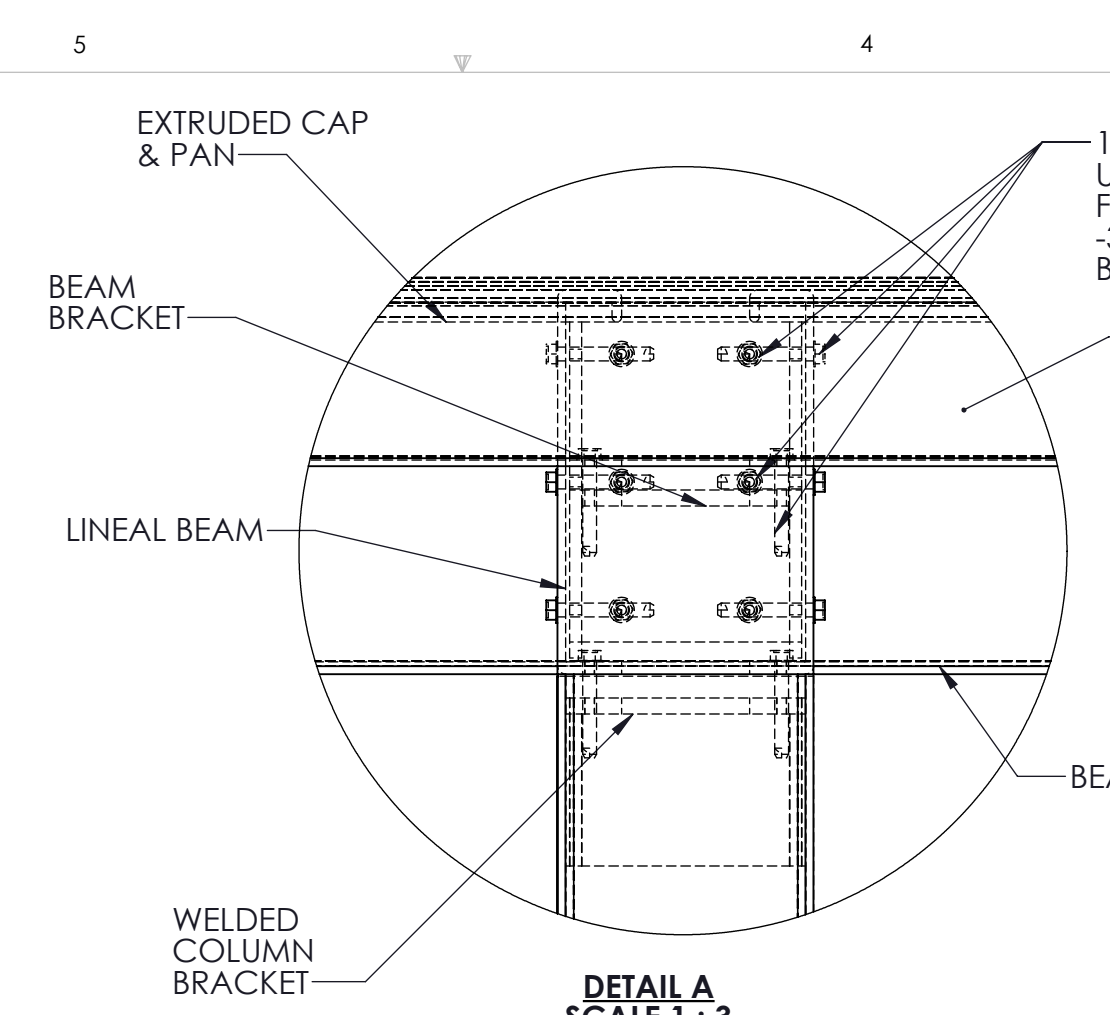


## SECTION VIEW OF CANOPY



## ISOMETRIC VIEW OF CANOPY

**SPECIFICATIONS**  
Section 107300 - Aluminum Walkway Covers

**1.01 General Description of Work:**  
A. Work in this section shall include design and fabrication of pre-engineered aluminum canopies.  
B. Canopies are to be fabricated and installed according to approved shop drawings.

**1.02 Design Criteria:**  
A. International Building Code 2015  
B. ASCE 7-10  
C. Aluminum Design Manual 2015  
D. Local governing codes and standards for site location

**1.03 Materials:**  
A. All materials shall be extruded from aluminum unless indicated otherwise on the drawing.  
B. Material sizes shall meet or exceed the design criteria on 1.02

**1.04 Finishes:**  
A. Factory applied baked enamel to comply with AAMA 2603  
B. Color selected from manufacturers standard colors

**1.05 Manufacturers:**  
A. Mitchell Metals, LLC -www.mitchellmetals.net - 770-431-7300  
B. Dittmer - www.dittdeck.com - 407-699-1755  
C. See Specifications 2.1-C for conditions of equivalent systems by other manufacturers.

NOTES:

- DC = DRAINING COLUMN (IF APPLICABLE)
- CANOPY WIDTH RECOMMENDED NOT TO EXCEED 13'-0"
- COLUMN HEIGHT RECOMMENDED NOT TO EXCEED 12'-0" OR WIDTH OF CANOPY, WHICH EVER IS LOWER
- ALL FASTENERS TO BE 300 SERIES STAINLESS STEEL OR ALUMINUM

JOB NAME: <b>COVERED WALKWAY CANOPIES</b>	
TITLE: <b>ARCHITECTURAL</b>	
REVISION # :	
DATE: 8/16/2017	SHEET 1 OF 1