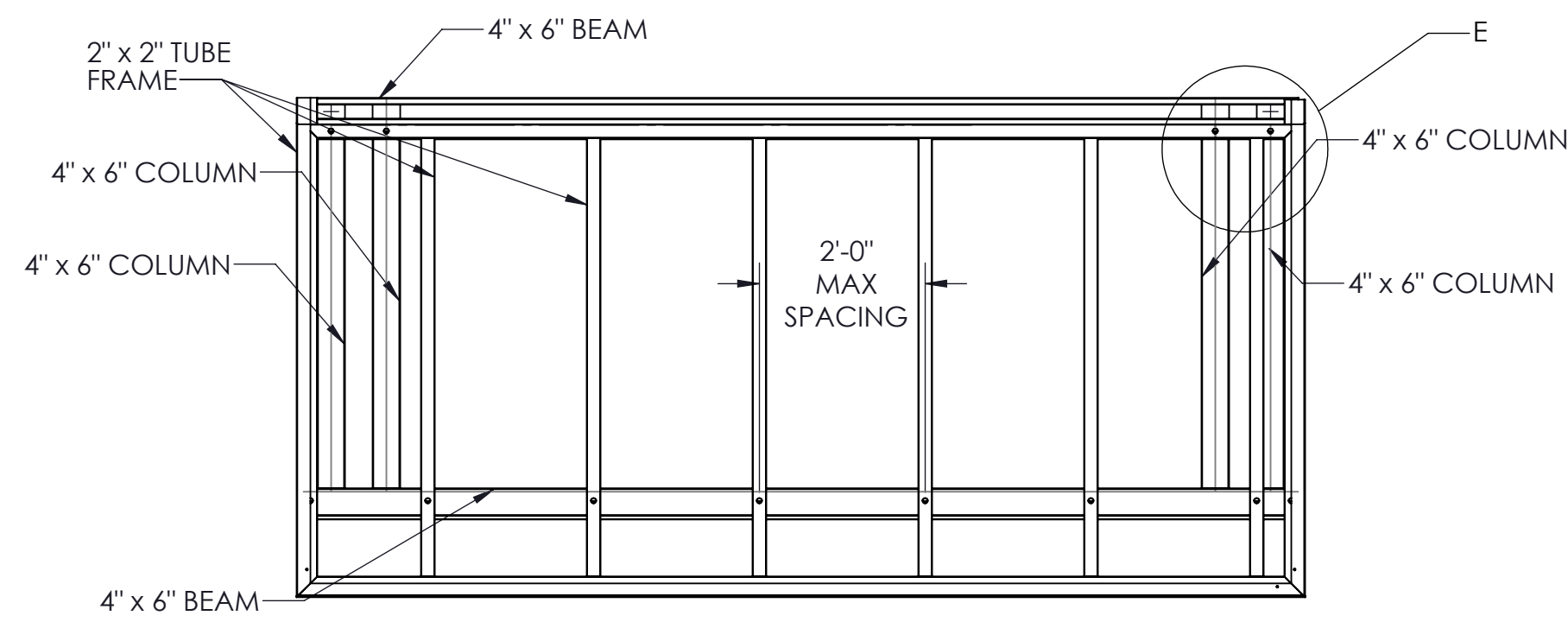
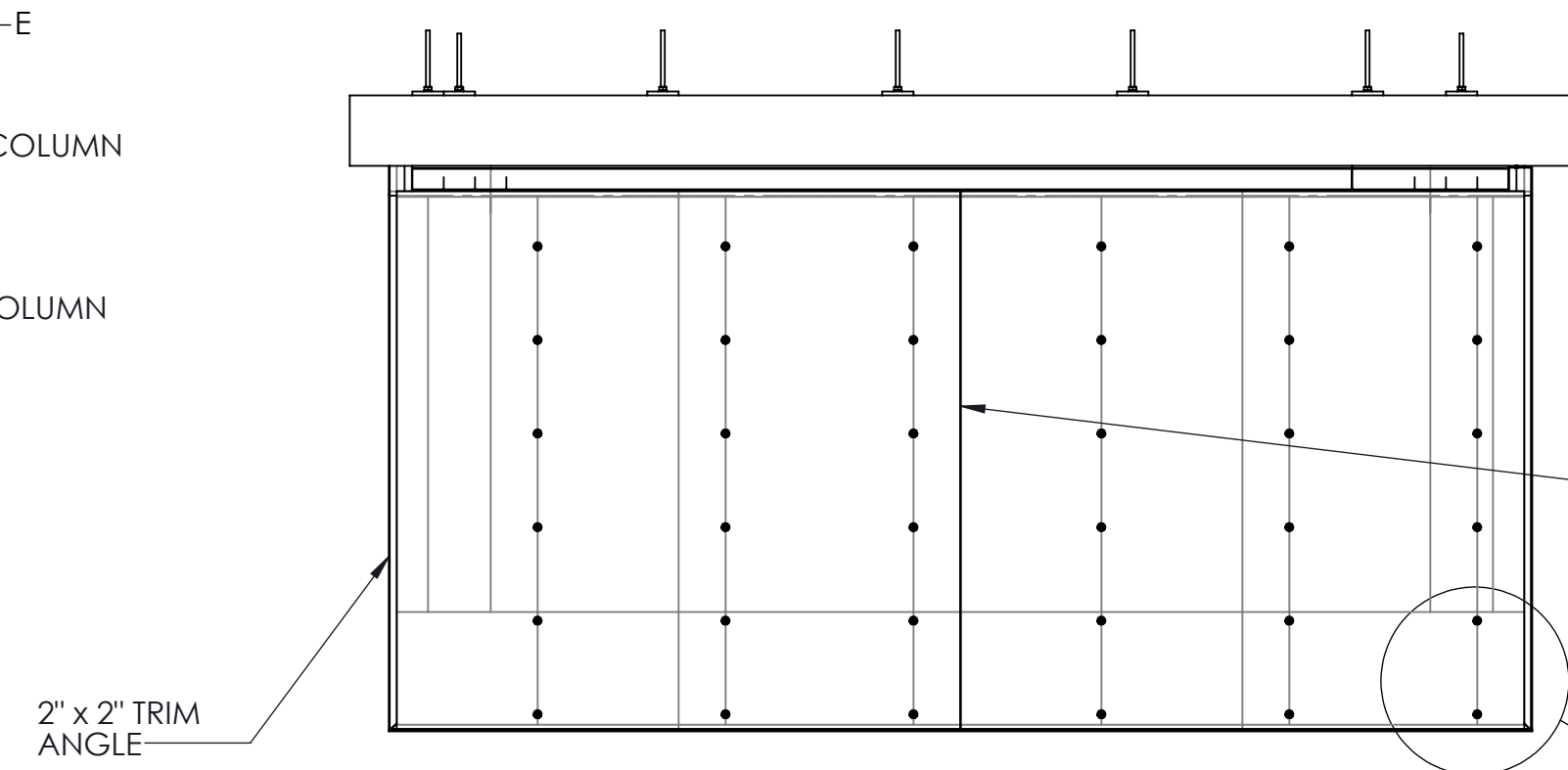


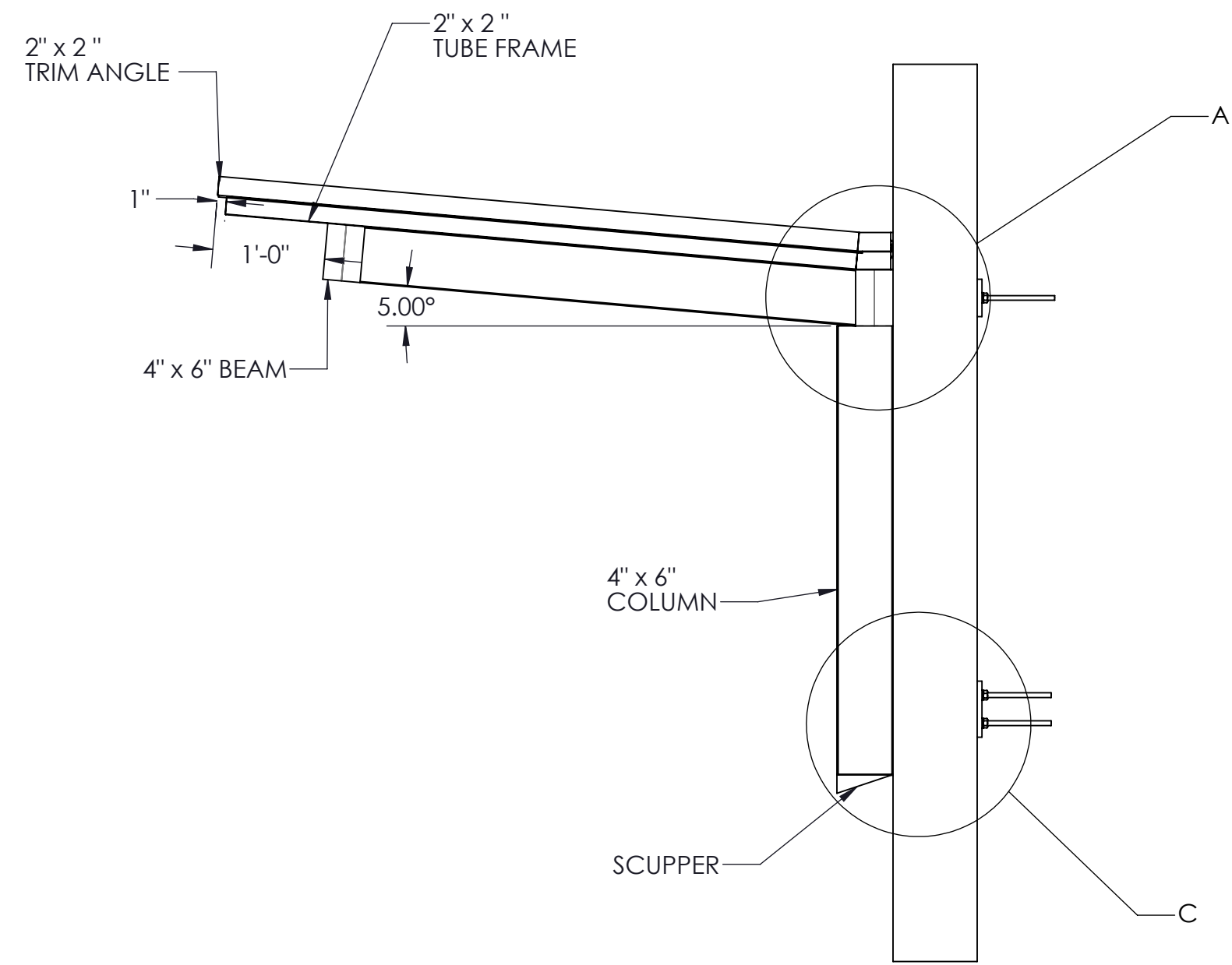
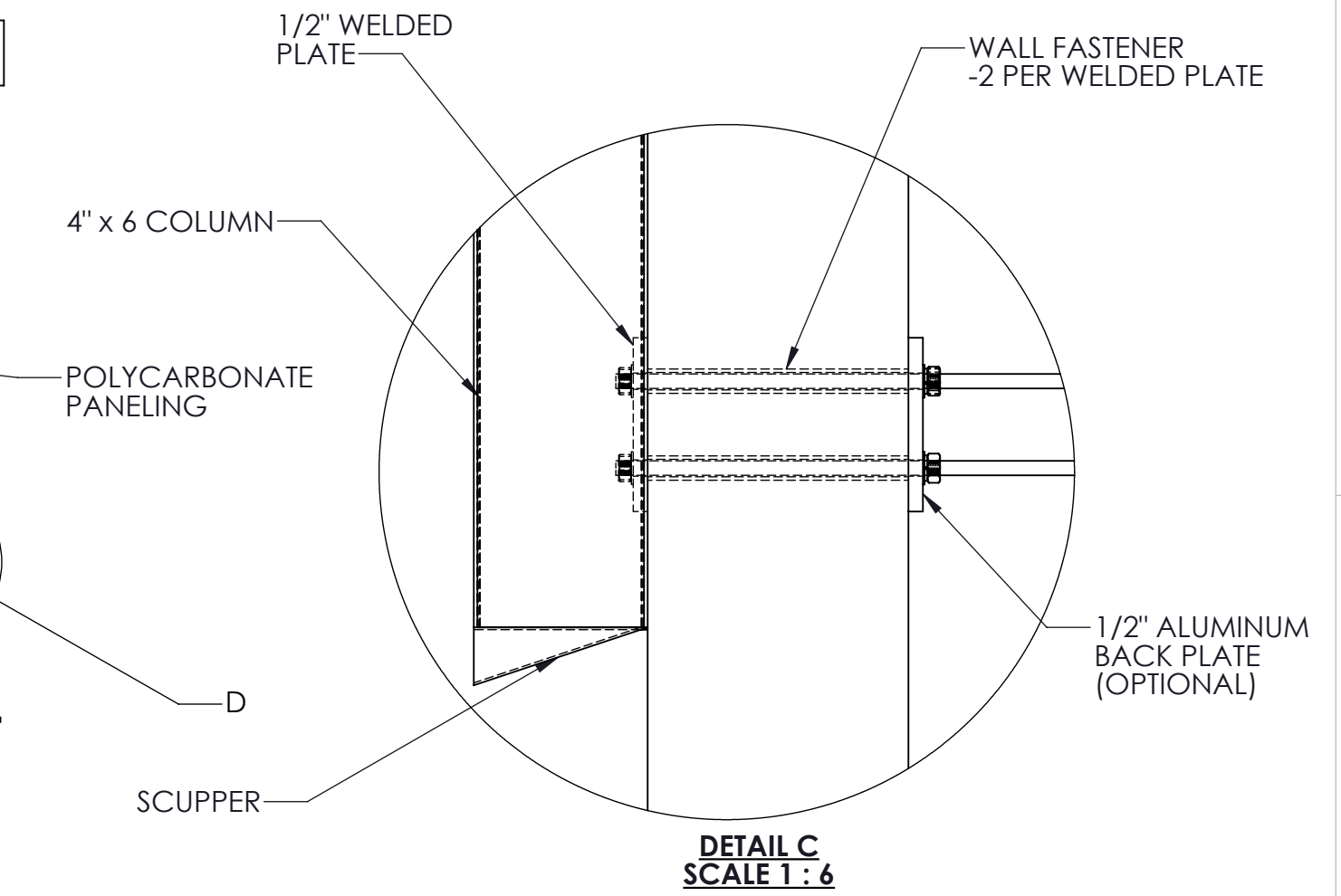
TOP VIEW OF CANOPY FRAME



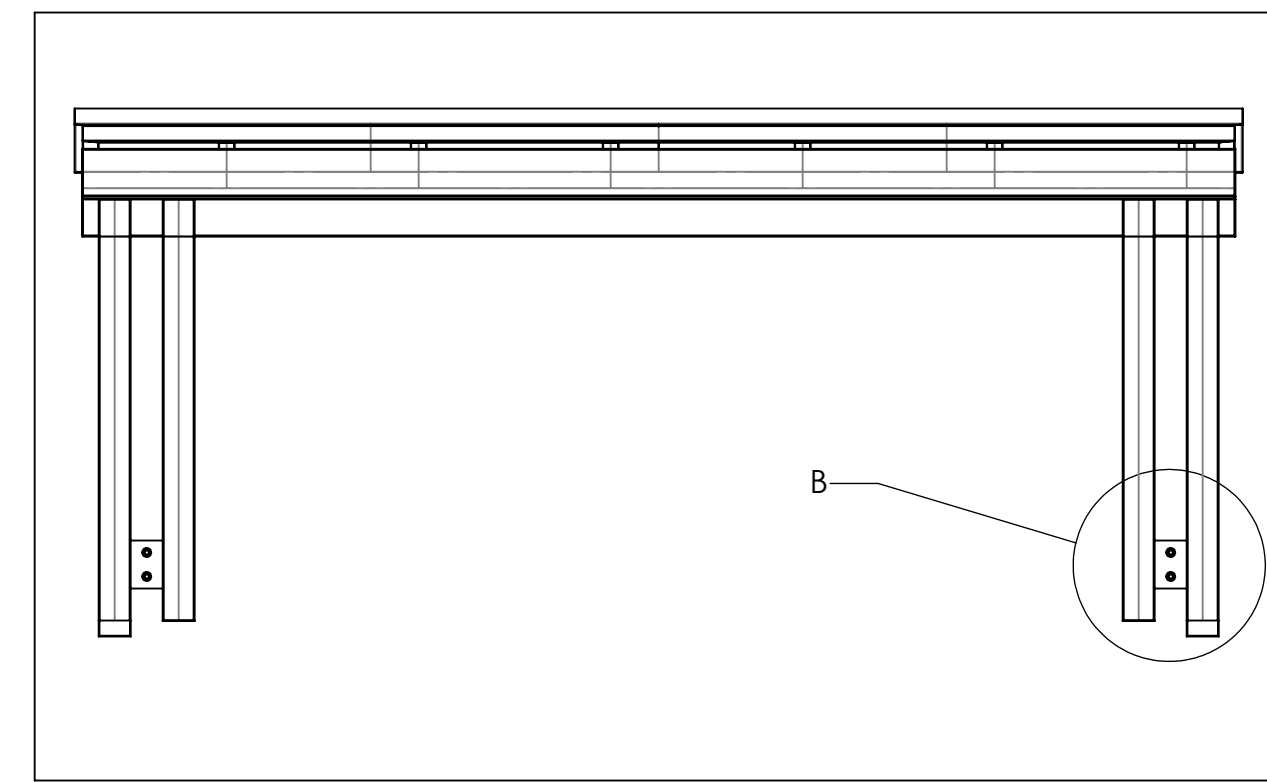
TOP VIEW OF CANOPY FRAME WITH 2"x 2" TUBE FRAME



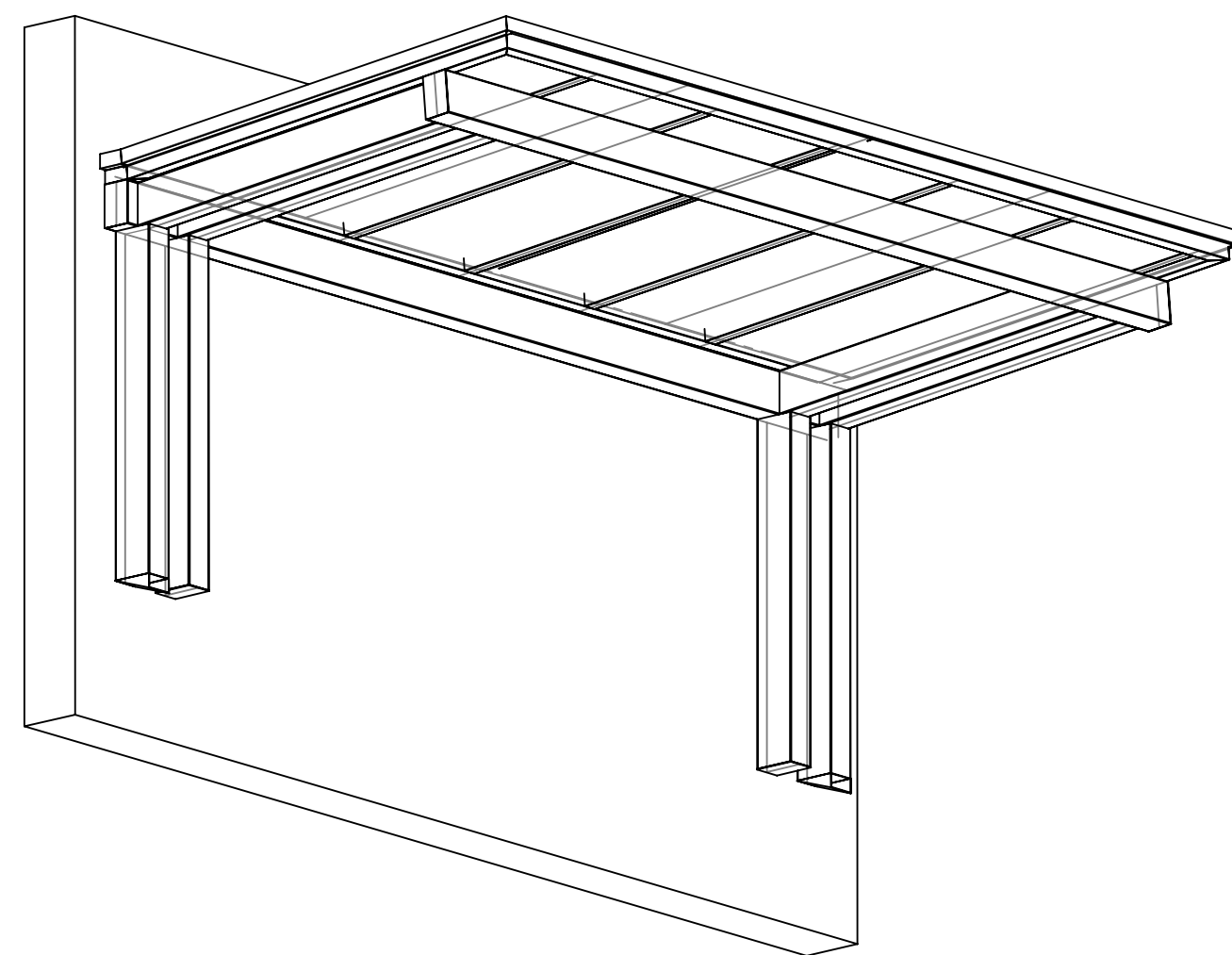
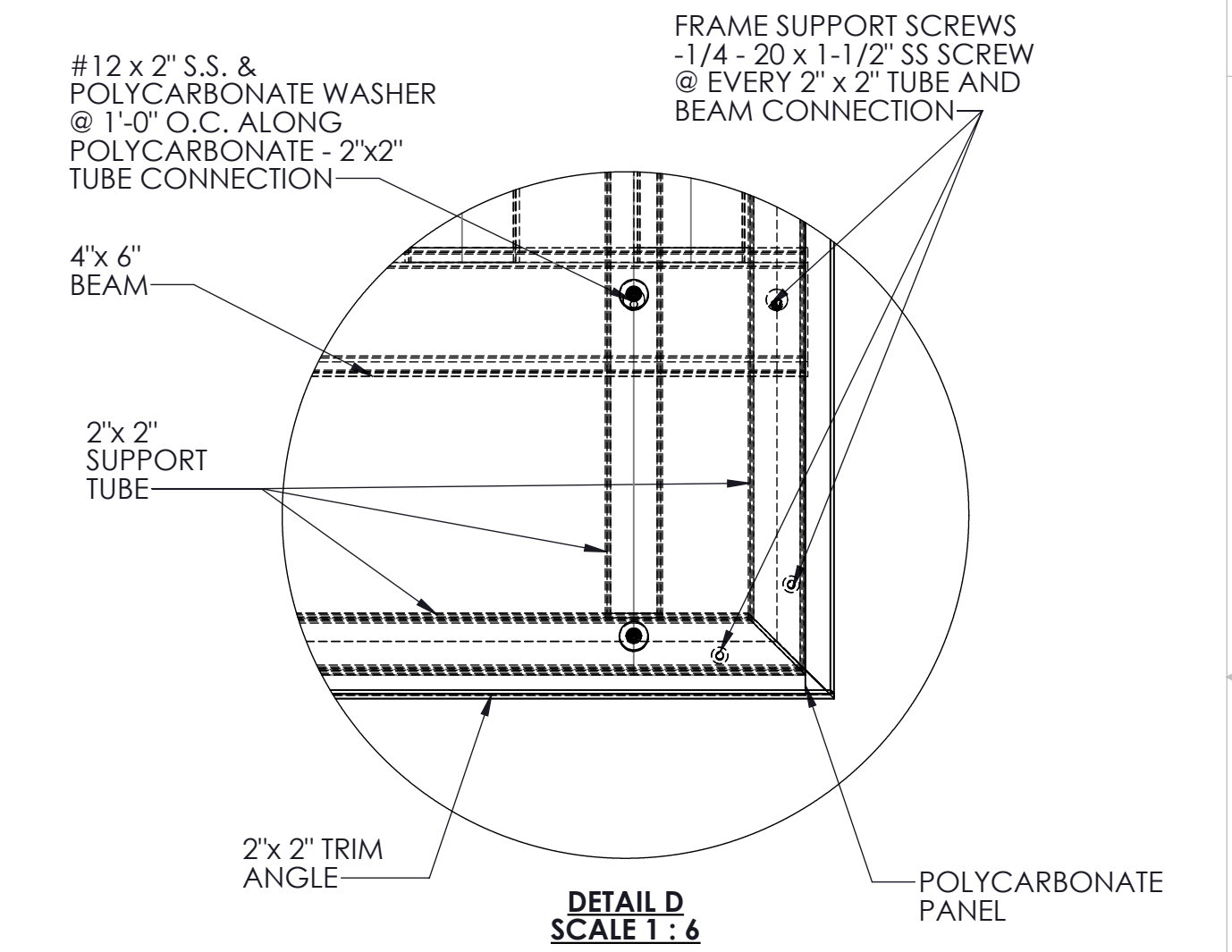
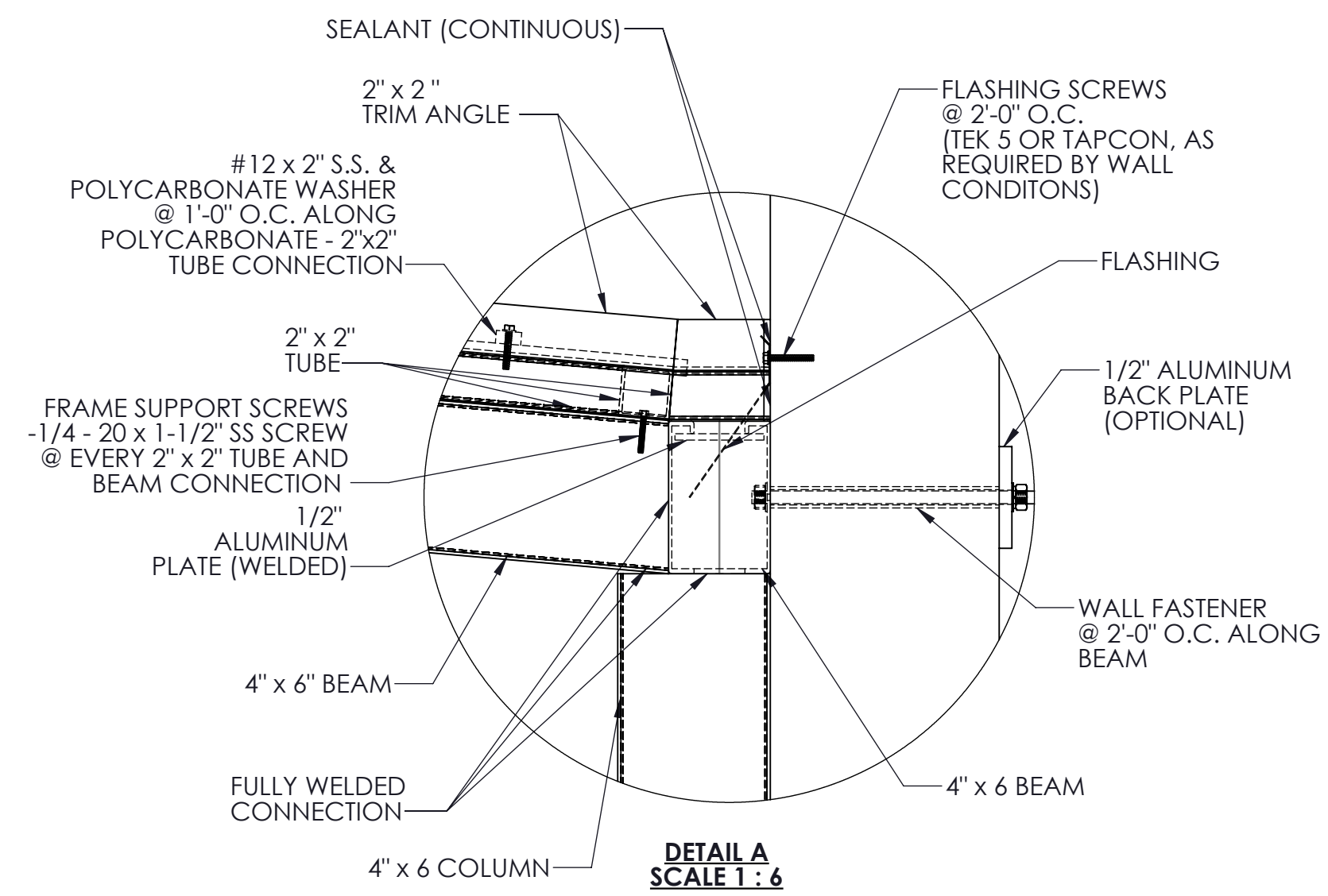
TOP VIEW OF CANOPY FRAME WITH 2"x 2" TUBE FRAME, 2"x 2" TRIM ANGLE AND POLYCARBONATE



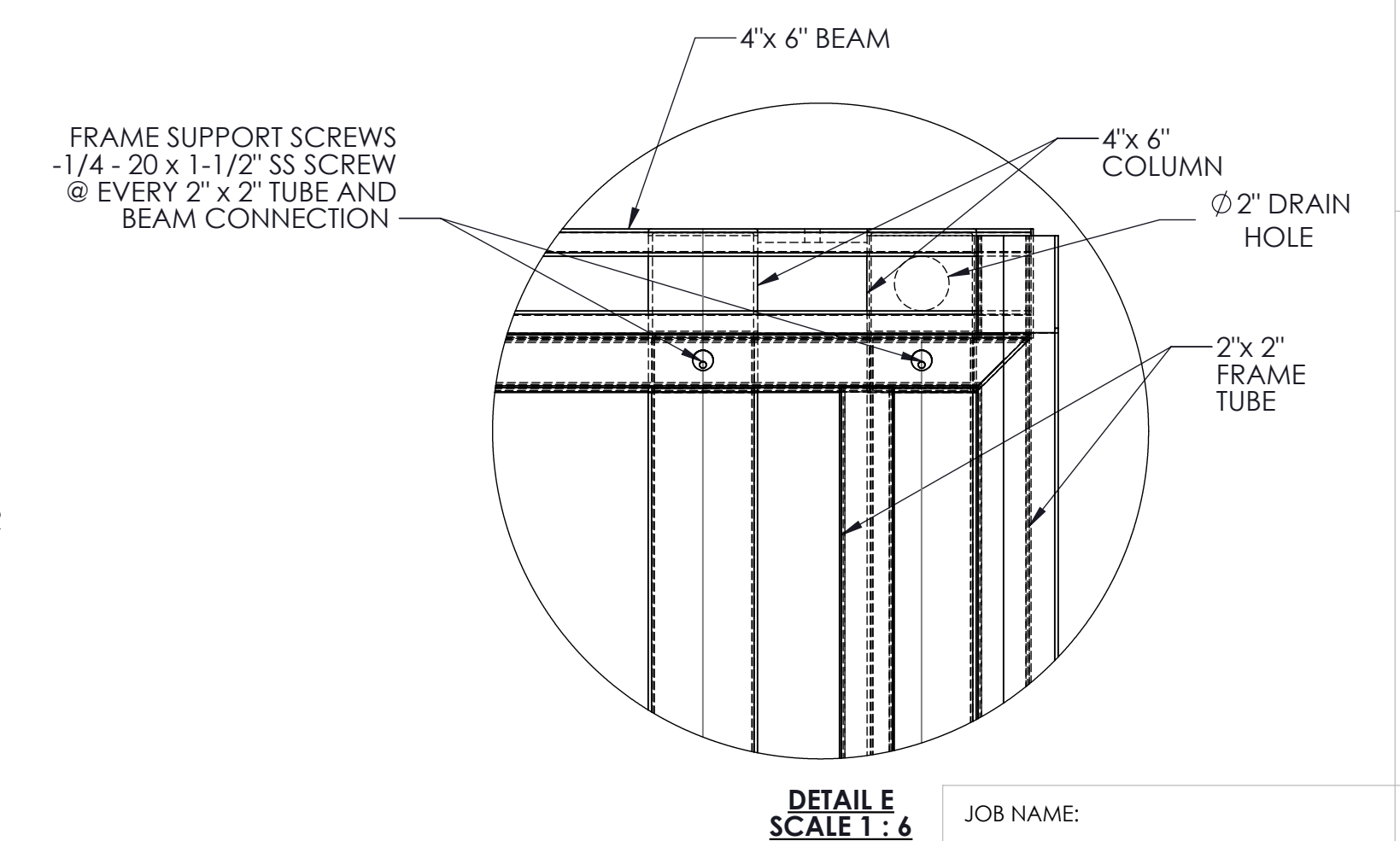
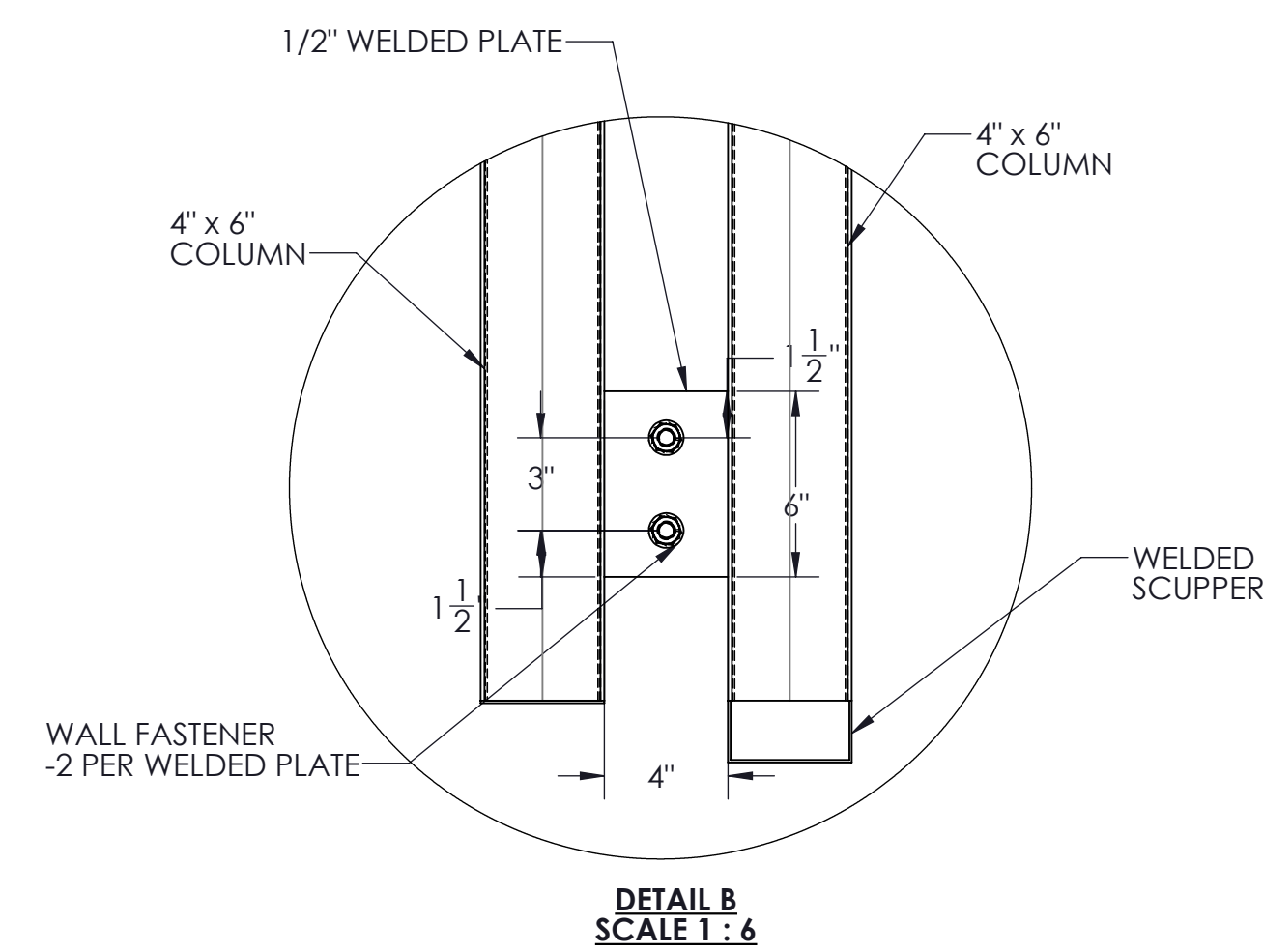
SIDE VIEW



ELEVATION VIEW



ISOMETRIC VIEW



SPECIFICATIONS
Section 107313 - Cantilevered Entrance Canopy

1.01 General Description of Work:
A. Work in this section shall include design and fabrication of pre-engineered aluminum canopies.
B. Canopies are to be fabricated and installed according to approved shop drawings.

1.02 Design Criteria:
A. International Building Code 2015
B. ASCE 7-10
C. Aluminum Design Manual 2015
D. Local governing codes and standards for site location

1.03 Materials:
A. All materials shall be extruded from aluminum unless indicated otherwise on the drawing.
B. Material sizes shall meet or exceed the design criteria on 1.02

1.04 Finishes:
A. Factory applied baked enamel to comply with AAMA 2603
B. Color selected from manufacturers standard colors

1.05 Manufacturers:
A. Mitchell Metals, LLC - www.mitchellmetals.net - 770-431-7300
B. Dittmer - www.dittdeck.com - 407-699-1755
C. See Specifications 2.1-C for conditions of equivalent systems by other manufacturers.

- NOTES:
- ALL FRAMING CONNECTIONS TO BE WELDED
 - 2" x 2" TUBE FRAME WILL SIT ON TOP OF 4" x 6" ALUMINUM COLUMN AND BEAM FRAME
 - ALL FASTENERS TO BE 300 SERIES STAINLESS STEEL OR ALUMINUM

JOB NAME: Entrance and Overhead Supported Canopies	
TITLE: Cantilevered Entrance Canopy	
REVISION # :	
DATE: 8/17/2017	SHEET 1 OF 1