



1761 McCoba Drive, Suite A, Smyrna, GA 30080  
 Phone: (770) 431-7300 Fax: (770) 431-7305

# 4'-0" x 8'-0" Canopy (6" Gutter)

### Material Specifications

Gutter- 6" x 4" x .093"  
 Extruded Aluminum  
 Decking- .032" W-Pan  
 Roll Formed Aluminum  
 OHS Supports- 2" x 2" x .125"  
 Extruded Aluminum  
 Frame Supports- 2" x 2" x .125"  
 Extruded Aluminum

### Color Selection

PRODUCTION CANNOT BE STARTED UNTIL  
 COLOR SELECTION HAS BEEN MADE.

Finish: Baked Enamel

Extrusions (Available Standard Colors)

- Bronze
- White
- Bright Silver

Roll Formed Decking

- Bronze
- White
- Bright Silver

### Design Criteria

Canopy Design is in accordance with  
 the 2018 International Building Code,  
 ASCE 7-16 & Aluminum Design Manual  
 2015. Canopy is designed based on  
 the following loading Criteria.

Dead Load:	Self Weight
Live Load:	20 PSF
Snow Load:	50 PSF (MAX)
Wind:	180 MPH (MAX)
Exposure:	B or C
Risk Category:	II

Engineering Scale	Architect Scale
1:1	Full
1:2	6" = 1'-0"
1:4	3" = 1'-0"
1:8	1-1/2" = 1'-0"
1:16	3/4" = 1'-0"
1:24	1/2" = 1'-0"
1:32	3/8" = 1'-0"
1:48	1/4" = 1'-0"
1:64	3/16" = 1'-0"
1:96	1/8" = 1'-0"
1:128	3/32" = 1'-0"

CONTRACTOR APPROVAL

ARCHITECT APPROVAL

DETAILER:

**LMA**

STAMP

JOB NAME:

TITLE:

**COVER SHEET**

REVISION # :

DATE: 4/16/2021

SHEET 1 OF 5

## MATERIAL ONLY INSTALLATION NOTES

---

- For assistance and help in installing our aluminum canopies, please refer to our canopy installation videos on our website at: [www.mitchellmetals.net/installation-videos/](http://www.mitchellmetals.net/installation-videos/)
- Canopy support columns (unless noted otherwise) will be sent at stock length and will need to be transitted and cut to length in field. This is for field adjustments due to elevation changes in grade.
- Canopy decking and framing members (excluding columns) will be cut and fabricated to length per Mitchell Metals shop drawings unless noted otherwise.
- Deflector plate holes are to be cut in the field and deflector plates are to be installed and caulked in the field. (This is due to varying grade elevations and the allowance to change drain locations in field as required.)
- All holes for fastener attachments are not pre-drilled and must be drilled in the field. All drain holes for the canopy system are not pre-drilled and must be drilled in the field (this is to allow for field modification of drain locations). All drain holes in column brackets and beam brackets are pre-drilled by Mitchell Metals. Below are a list of required drain hole sizes to be cut in the field:
  - Drain holes in extruded gutter - 2-1/2" diameter
  - Drain holes through bottom of drain beam above draining columns - 2-1/2" diameter
  - Drain holes through decking pans above drain beams (where required) - 1-1/2" diameter
  - Weepholes at bottom of columns for all non-draining columns - 1/4" diameter
  - Holes for all riveted connections - 3/16" diameter
  - Holes for all structural #14 fasteners - 1/4" diameter
- Unless noted otherwise, all non-draining columns will need to have a 1/4" weephole drilled at the bottom of the column above finished grade in the field (this is to allow for water to escape if column fasteners ever leak over time).
- All fasteners required to assemble the canopy parts together are provided by Mitchell Metals. All fasteners required to attach the canopy to the building are BY OTHERS (unless noted otherwise explicitly by Mitchell Metals).
- All styrofoam blockouts required for walkway canopy foundations are provided by Mitchell Metals but are to be installed BY OTHERS.

## INSTALLATION TOOLS RECOMMENDATIONS BY MITCHELL METALS

---

### OVERHEAD SUPPORTED CANOPY

- ALL REQUIRED PERSONAL PROTECTIVE EQUIPMENT
- LEVEL
- RAZOR KNIFE
- TAPE MEASURE
- 5/16" & 3/8" NUT DRIVERS
- METAL DRILL BITS (VARIOUS SIZES)
- RIVET GUN
- CAULK GUN
- POWER DRILL
- RATCHET TOOLS / WRENCHES (FOR ALL BOLT CONNECTIONS)
- 2-1/2" HOLE SAW (FOR DRAIN HOLES)
- VISE GRIP CLAMPS (IF CORNER SETS ARE REQUIRED)
- SPEED SQUARE

## DISCLAIMER

---

- Mitchell Metals is not responsible for erection of canopy materials or additional labor costs incurred by contractor due to not understanding how canopies are installed. Mitchell Metals provides job specific installation details on canopy shop drawings and general installation videos on our website that allow for a successful installation.
- Mitchell Metals ships canopy materials partially pre-fabricated, but depending on the nature of the order, various degrees of field fabrication may be required. Mitchell Metals is not responsible for field fabrication costs.
- Please contact us if there are any questions regarding installation or received materials. We strive to be the best at what we do, and are always available for questions if needed.

## INSTALLATION TOOLS RECOMMENDATIONS BY MITCHELL METALS

---

### WALKWAY CANOPY

- ALL TOOLS REQUIRED FOR OVERHEAD SUPPORTED CANOPY
- CIRCULAR SAW (WITH HIGH TOOTH COUNT NON-FERROUS METALS BLADE)
- TIN SNIP/SHEARS
- TRANSIT LEVEL W/ STAND
- JIGSAW OR RECIPROCATING SAW (WITH METAL BLADE, FOR DEFLECTOR PLATE HOLE CUTTING)
- 12" EXTENSION FOR HOLE SAW
- EXTENSION FOR 3/8" NUT DRIVER (OR 12" LONG NUT DRIVER)

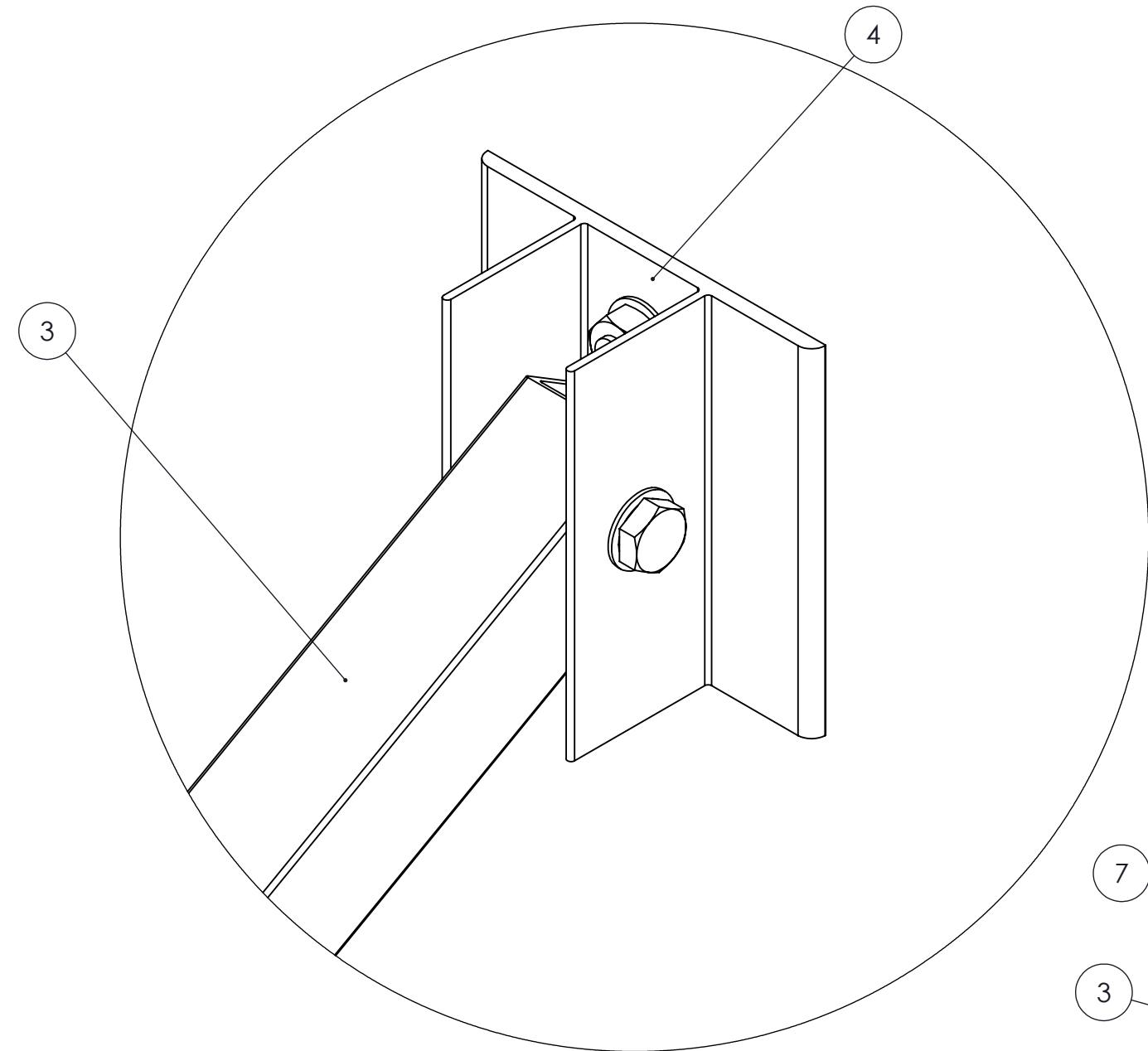
**INSTALLATION  
NOTES**

**MATERIAL  
ONLY**

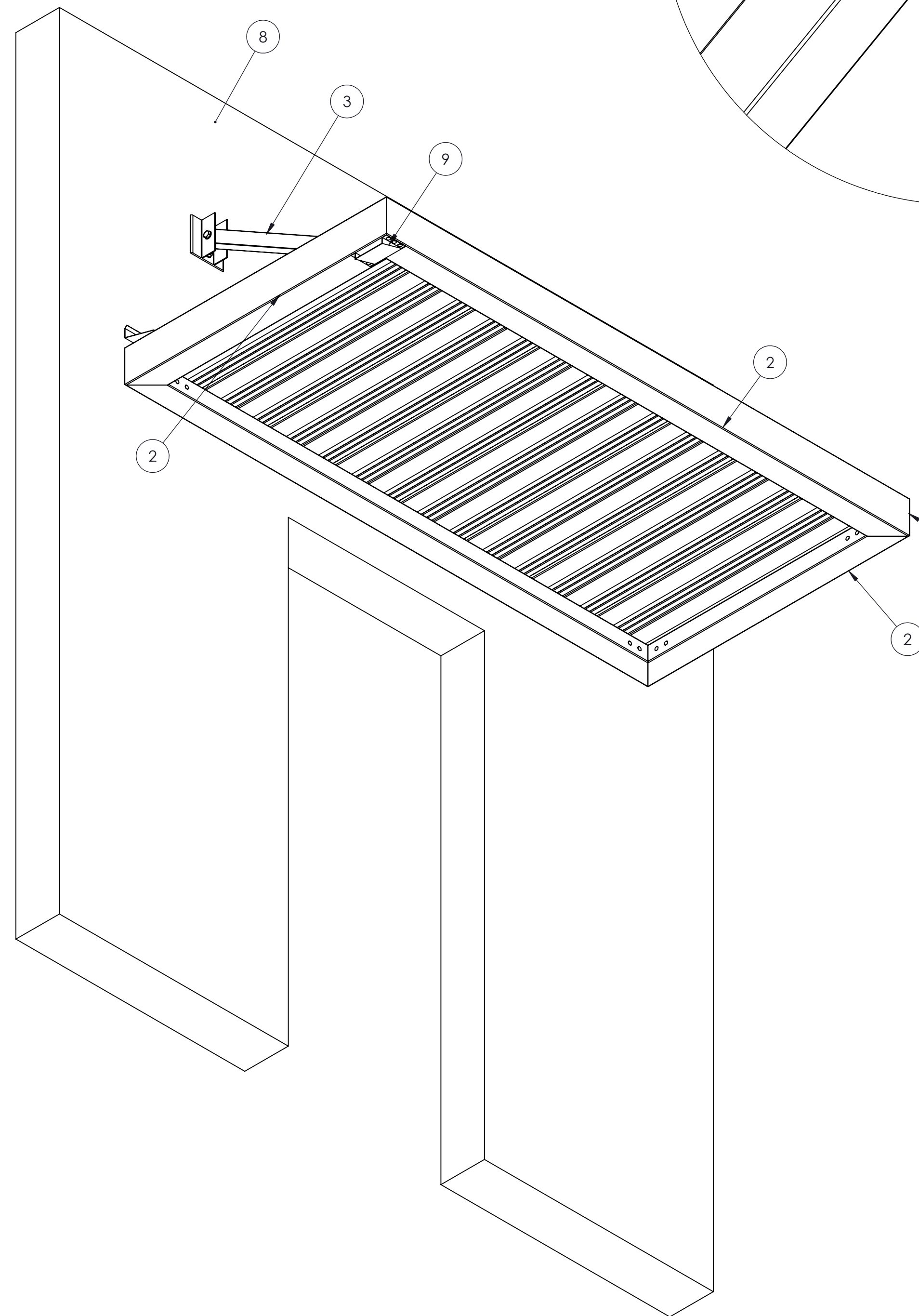


**ALL WALL FASTENERS TO BE SPECIFIED AND PROVIDED BY OTHERS**

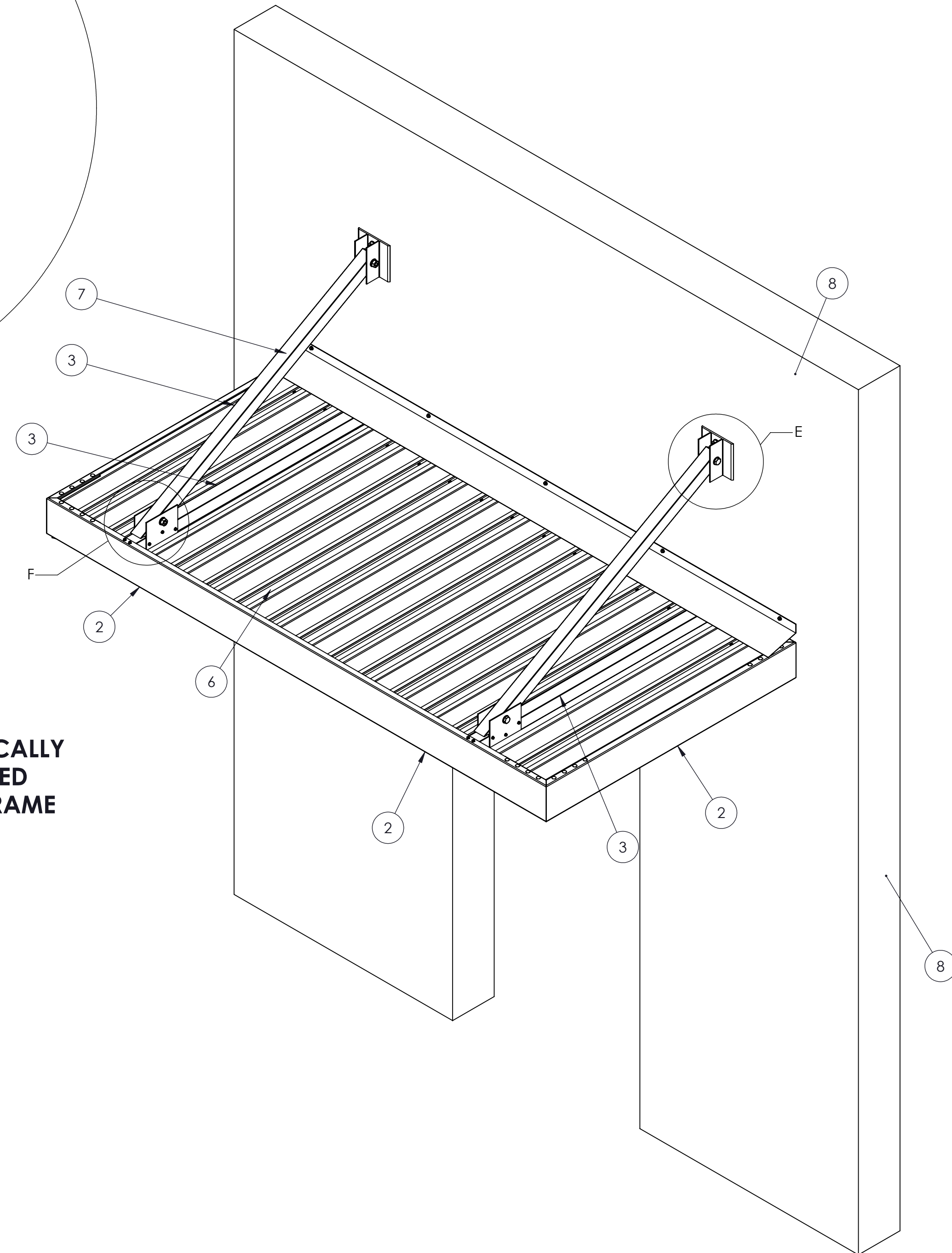
ITEM NO.	PART NUMBER	DESCRIPTION
1	4x8 (6in) Ft Canopy	
2		4X6 GUTTER
3		2 x 2 x .125 Square Tube
4		2x2 Aluminum Wall Bracket
5		2x2 Aluminum Saddle Bracket
6		.032 Roll Form W-Pan
7		0.040 Flashing
8	Wall B	Wall (By Others)
9	SCUPPER	



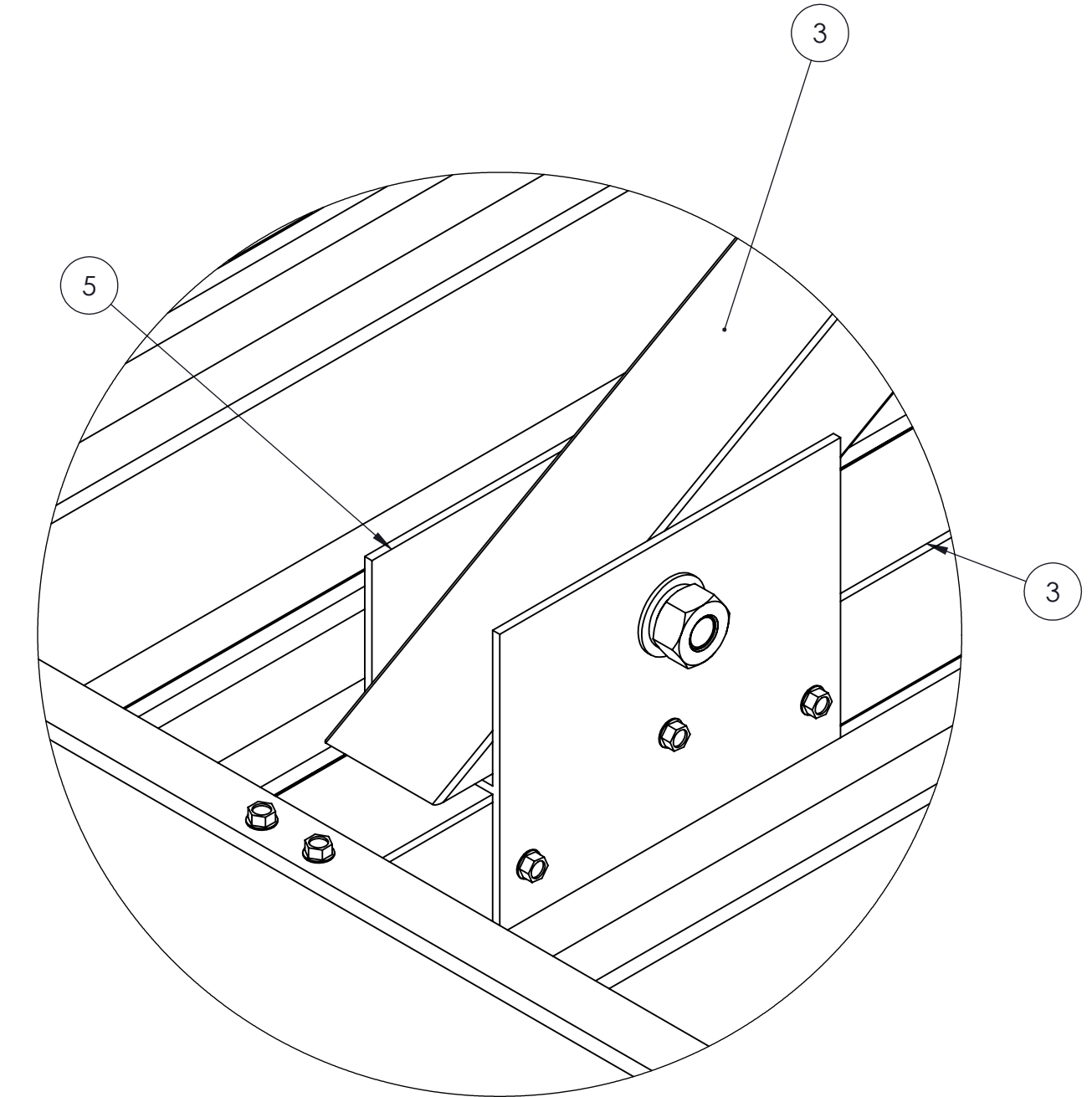
DETAIL E  
SCALE 1 : 2



**ISOMETRIC VIEW - BOTTOM**



**ISOMETRIC VIEW - TOP**



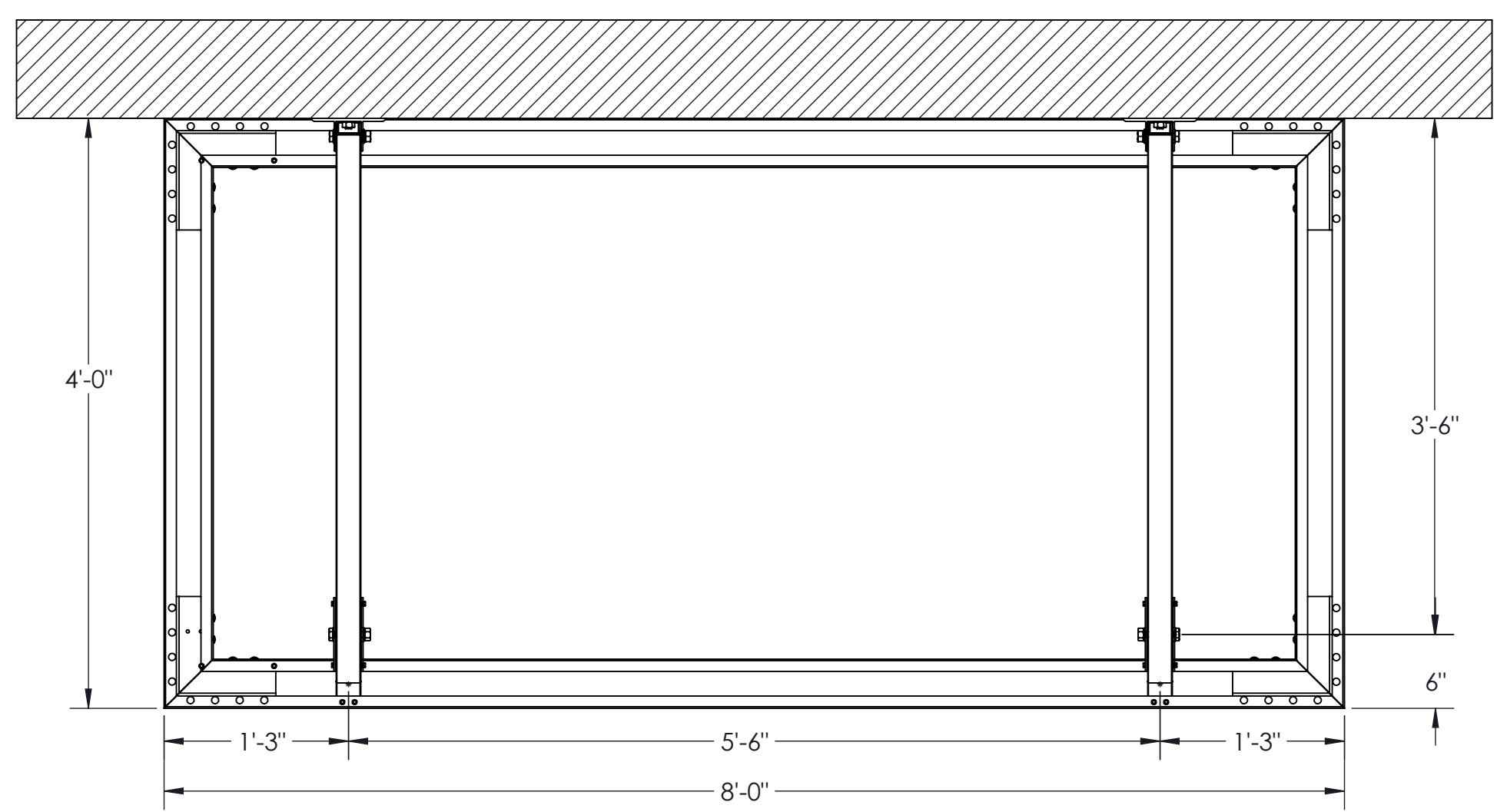
DETAIL F  
SCALE 1 : 2

**MECHANICALLY FASTENED GUTTER FRAME**

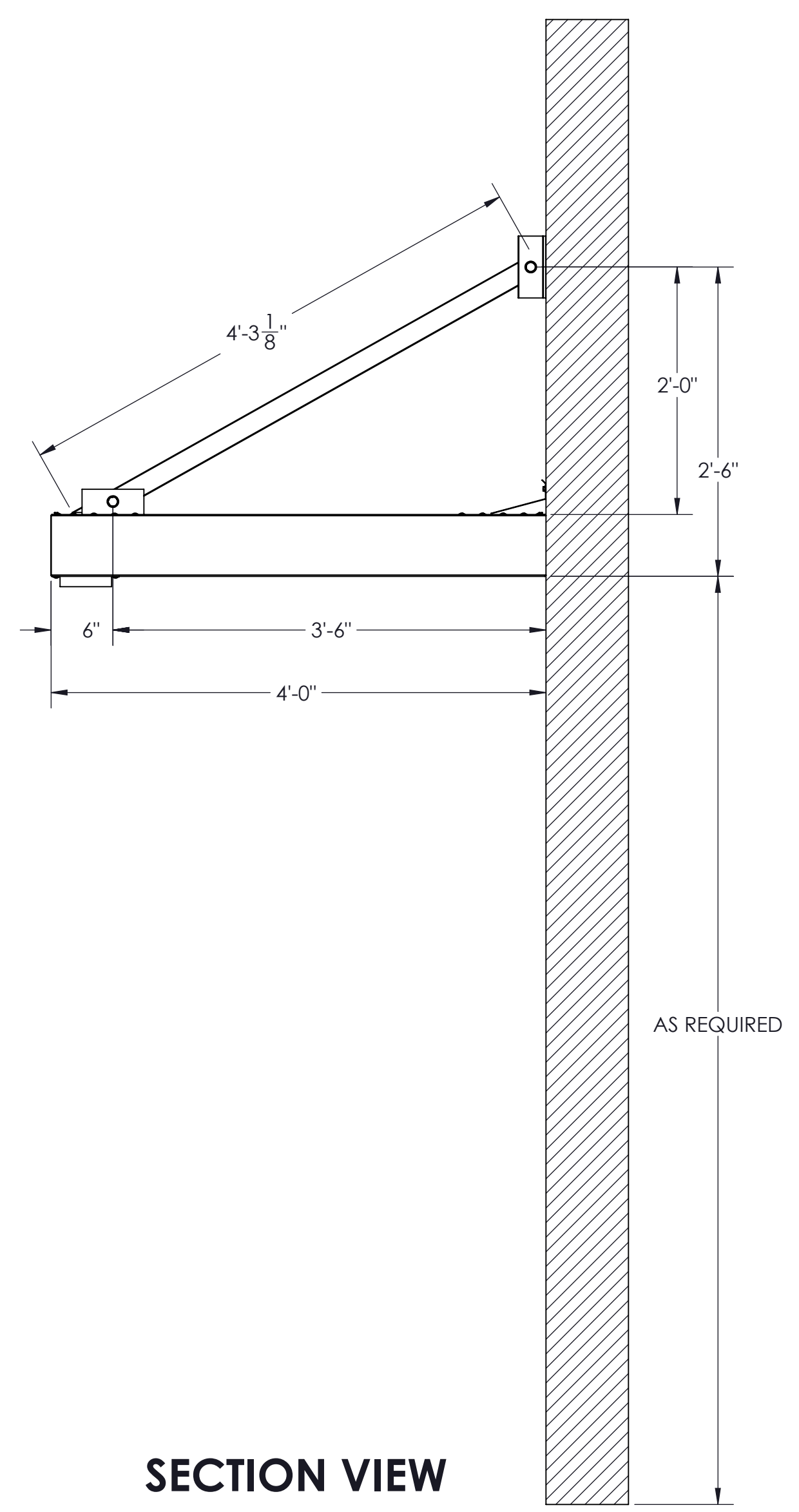
NOTES:

STAMP	JOB NAME:
	TITLE: <b>CANOPY "B"</b>
	REVISION # :
	DATE: 4/16/2021 SHEET 3 OF 5

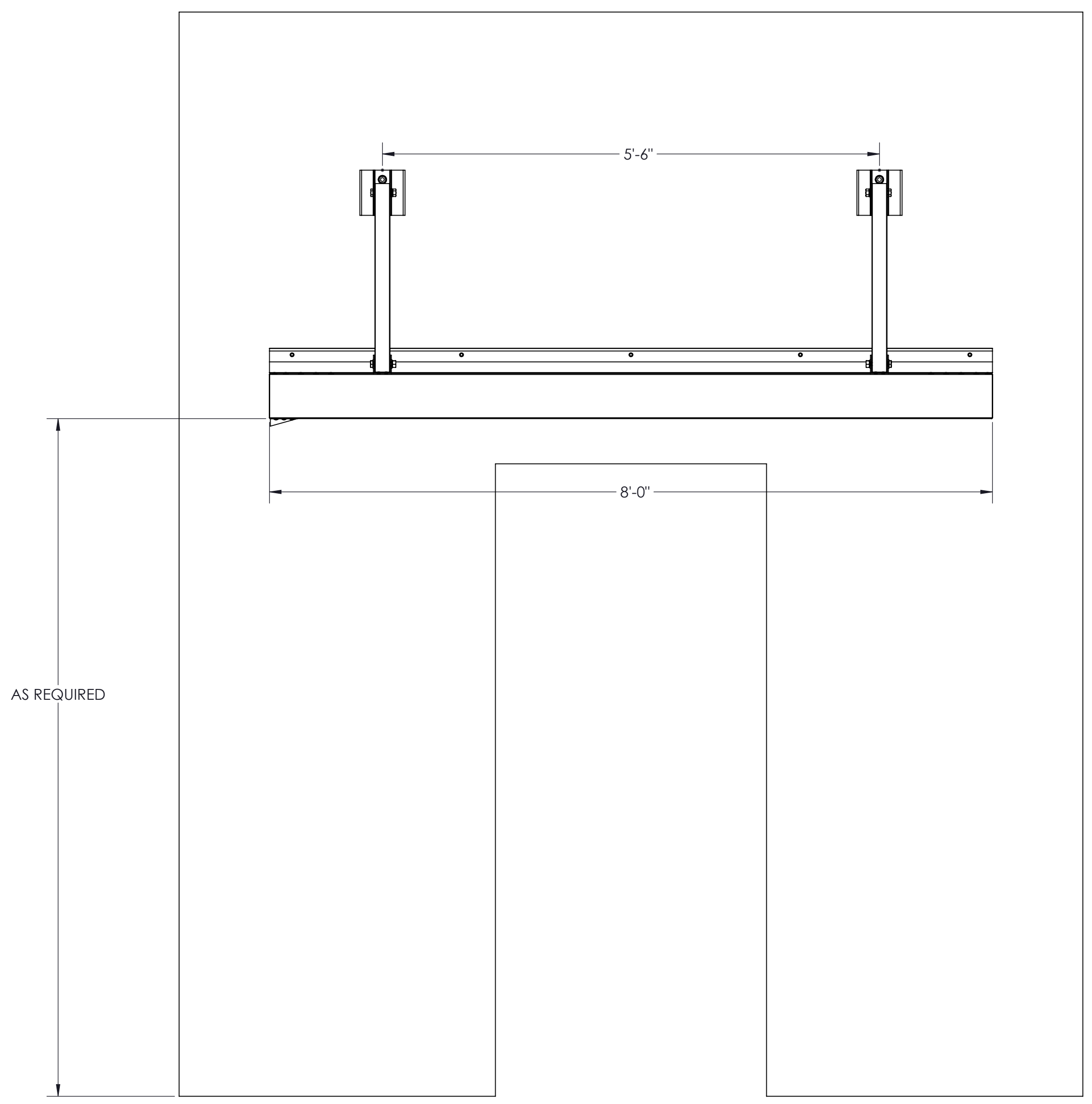
**ALL WALL FASTENERS TO BE SPECIFIED AND PROVIDED BY OTHERS**



**TOP VIEW (NO DECKING)**



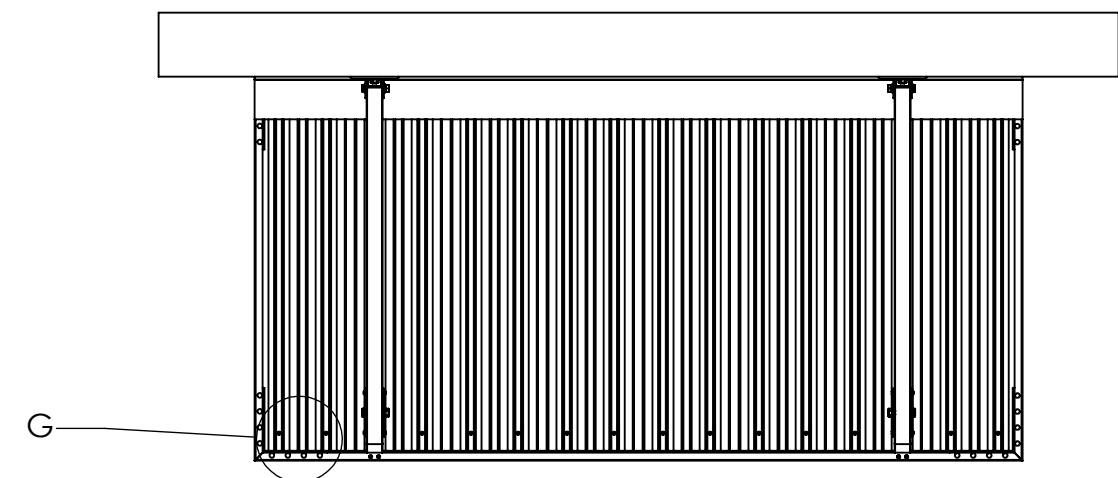
**SECTION VIEW**



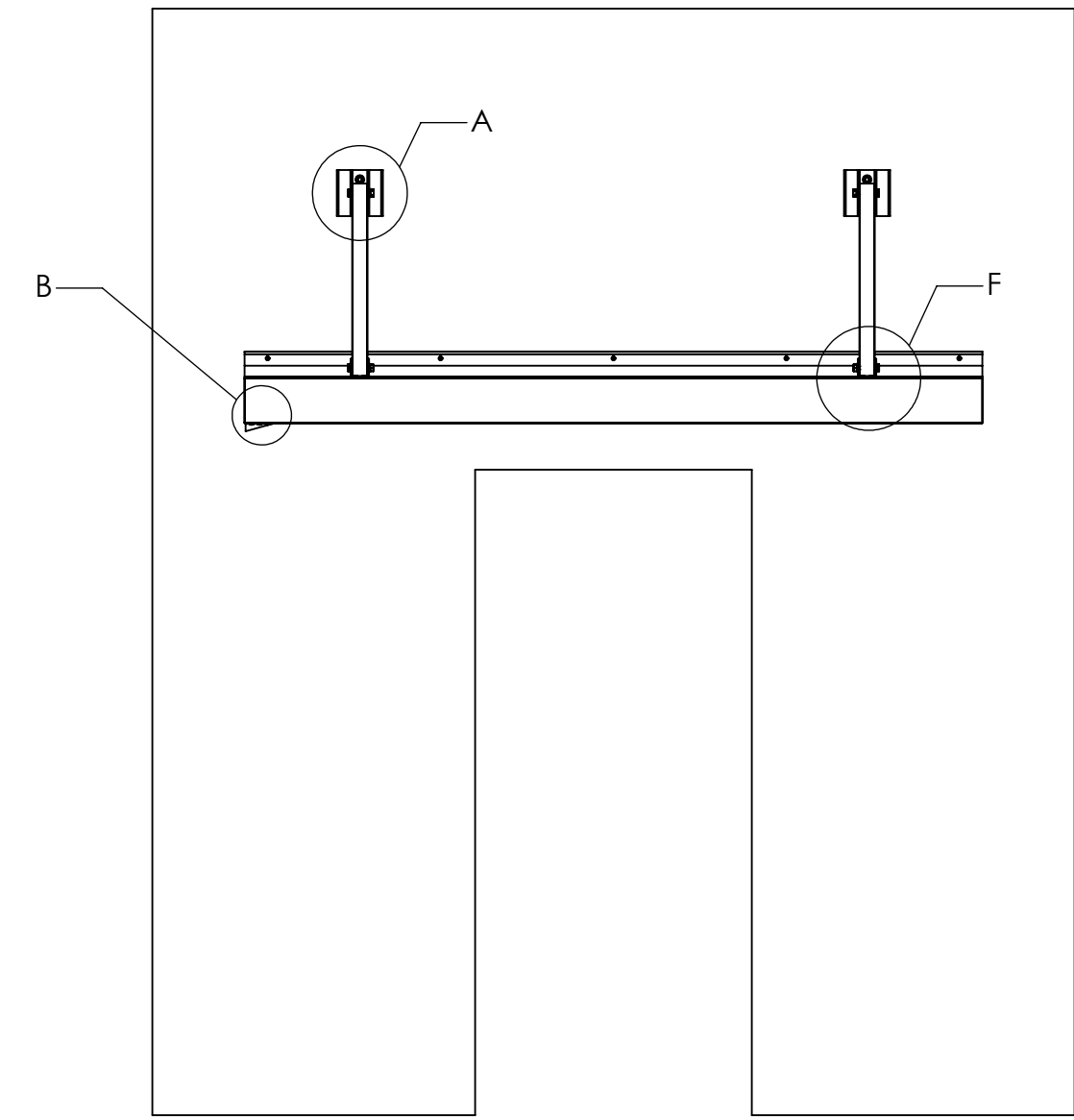
**ELEVATION VIEW**

NOTES:

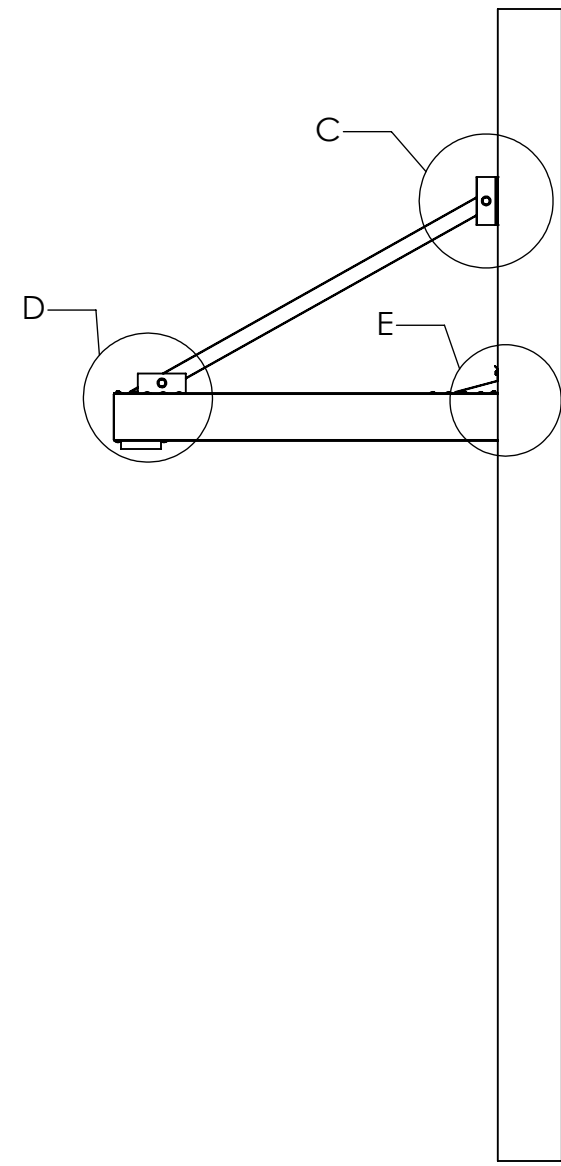
STAMP	JOB NAME:
	TITLE: <b>CANOPY "B"</b>
	REVISION # : DATE: 4/16/2021 SHEET 4 OF 5



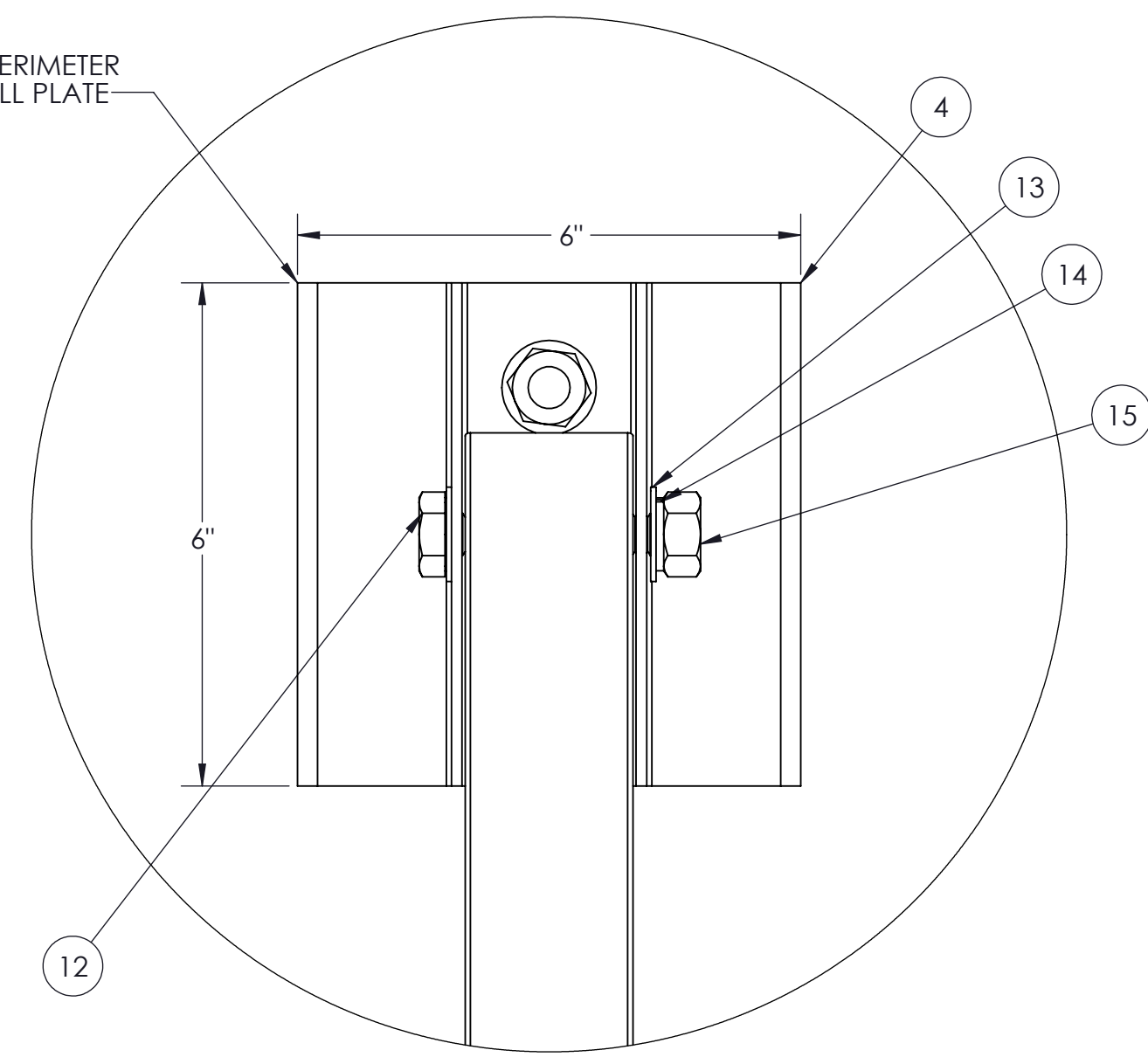
**TOP VIEW (NO DECKING)**



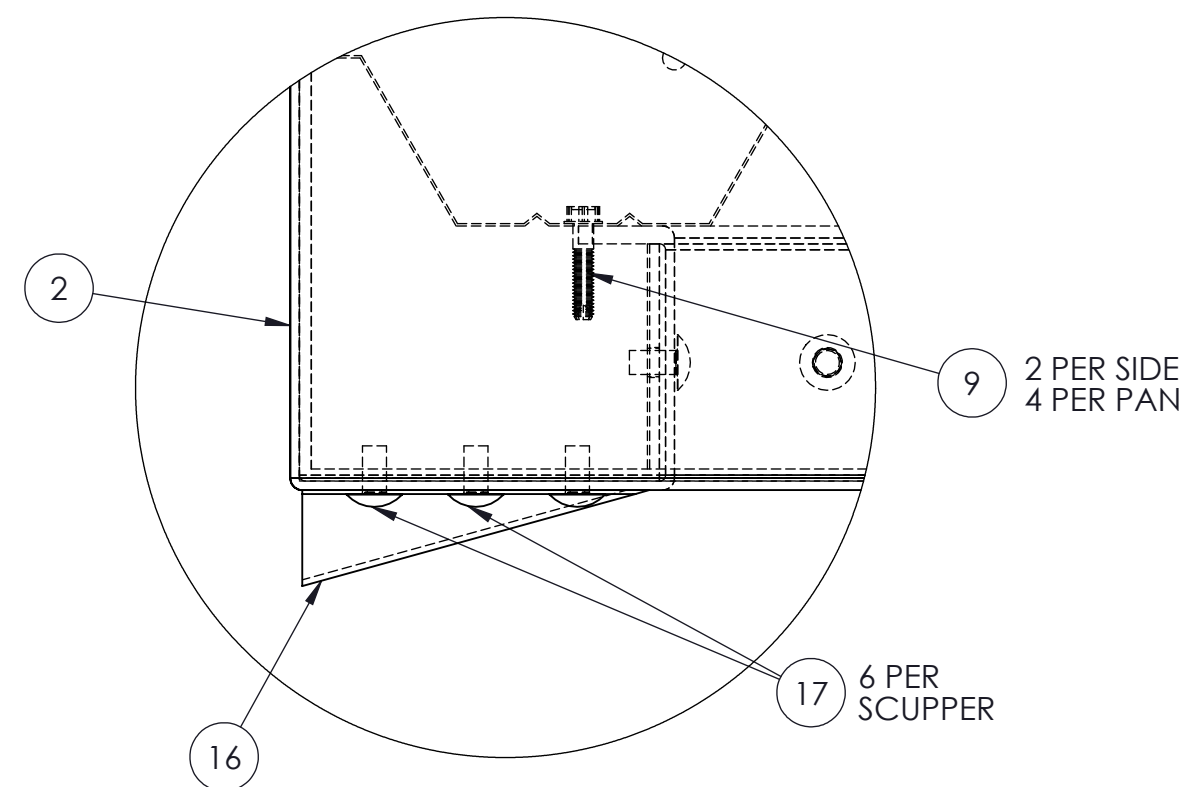
**ELEVATION VIEW**



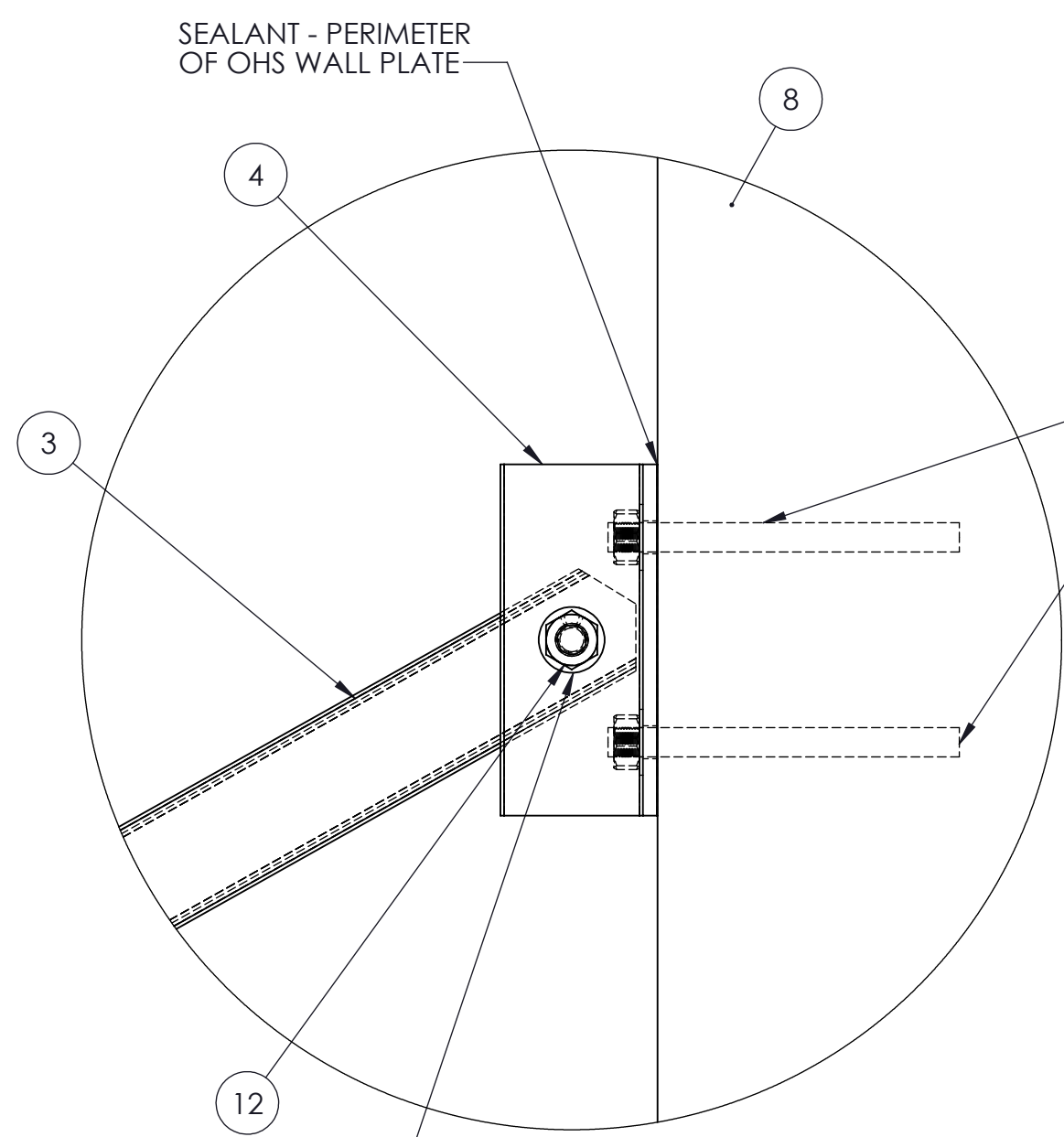
**SECTION VIEW**



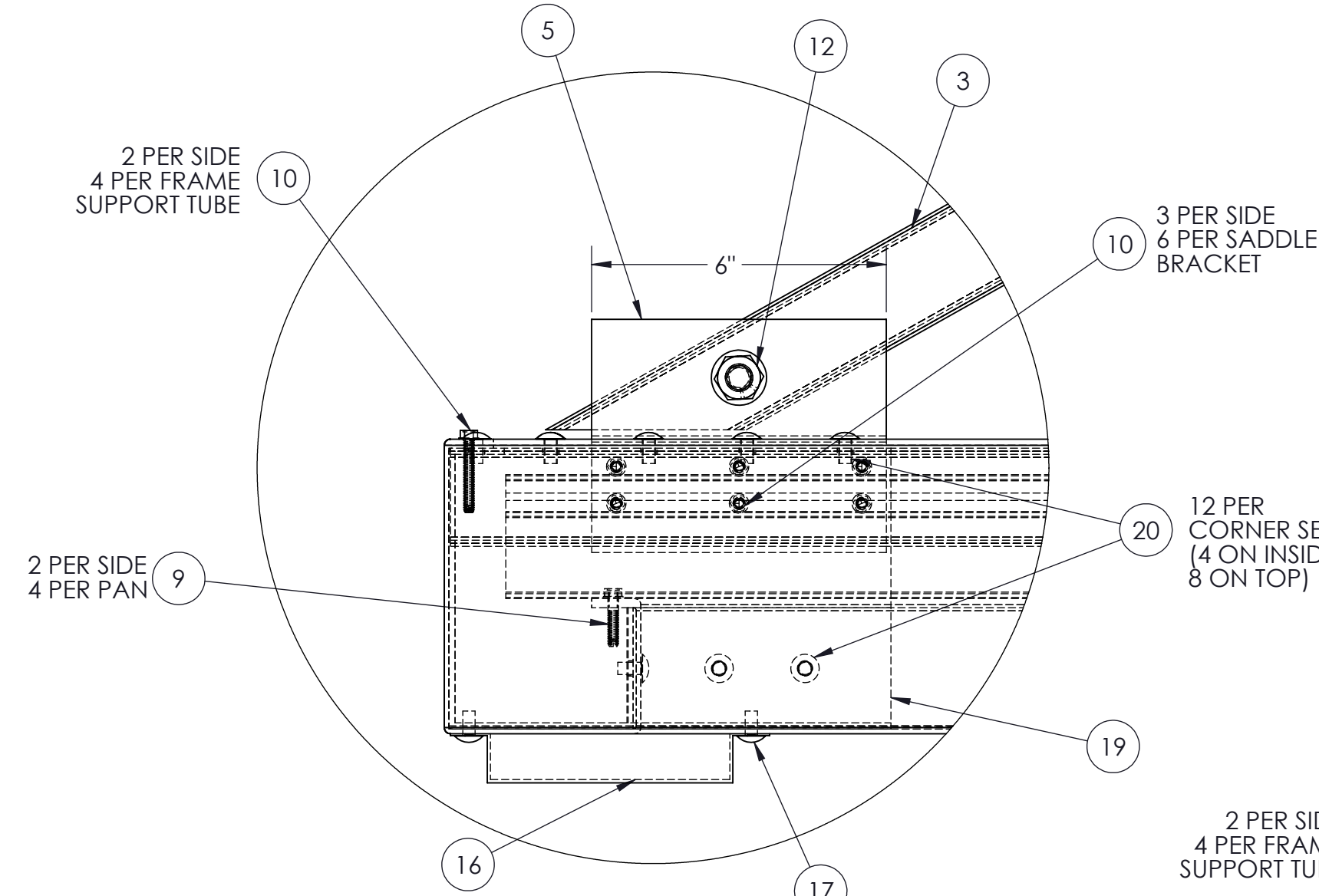
**DETAIL A  
SCALE 1:2**



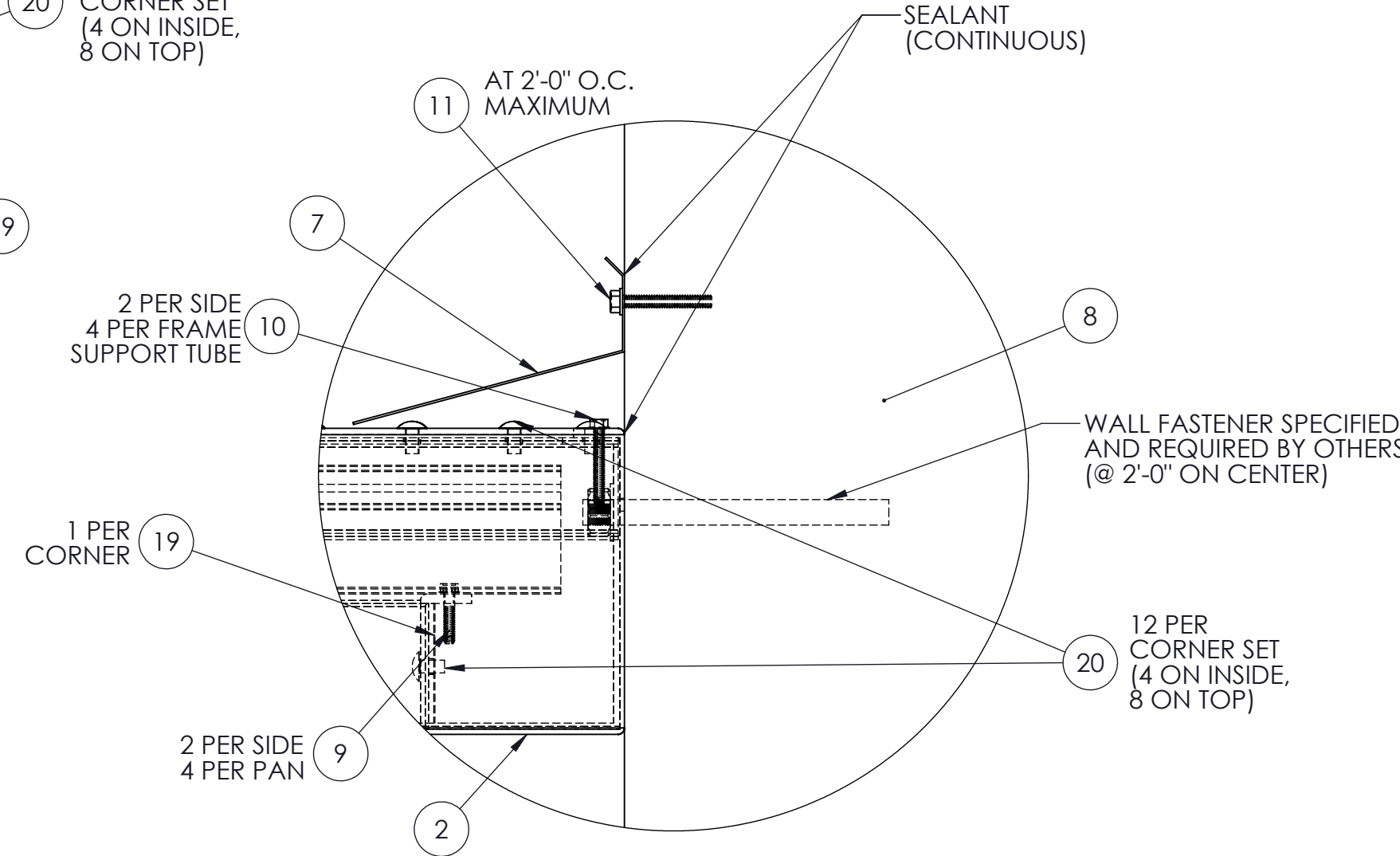
**DETAIL B  
SCALE 1:2**



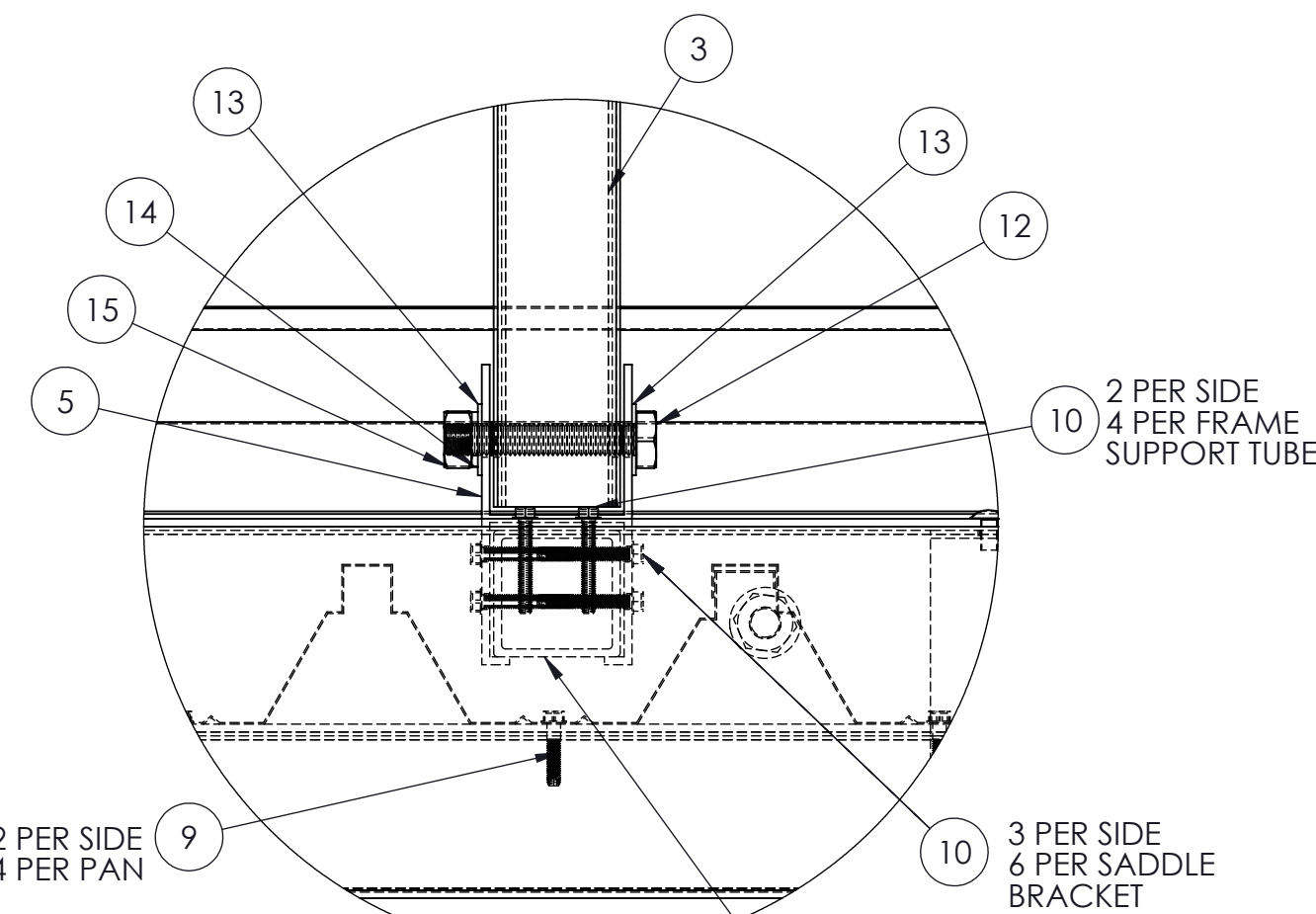
**DETAIL C  
SCALE 1:3**



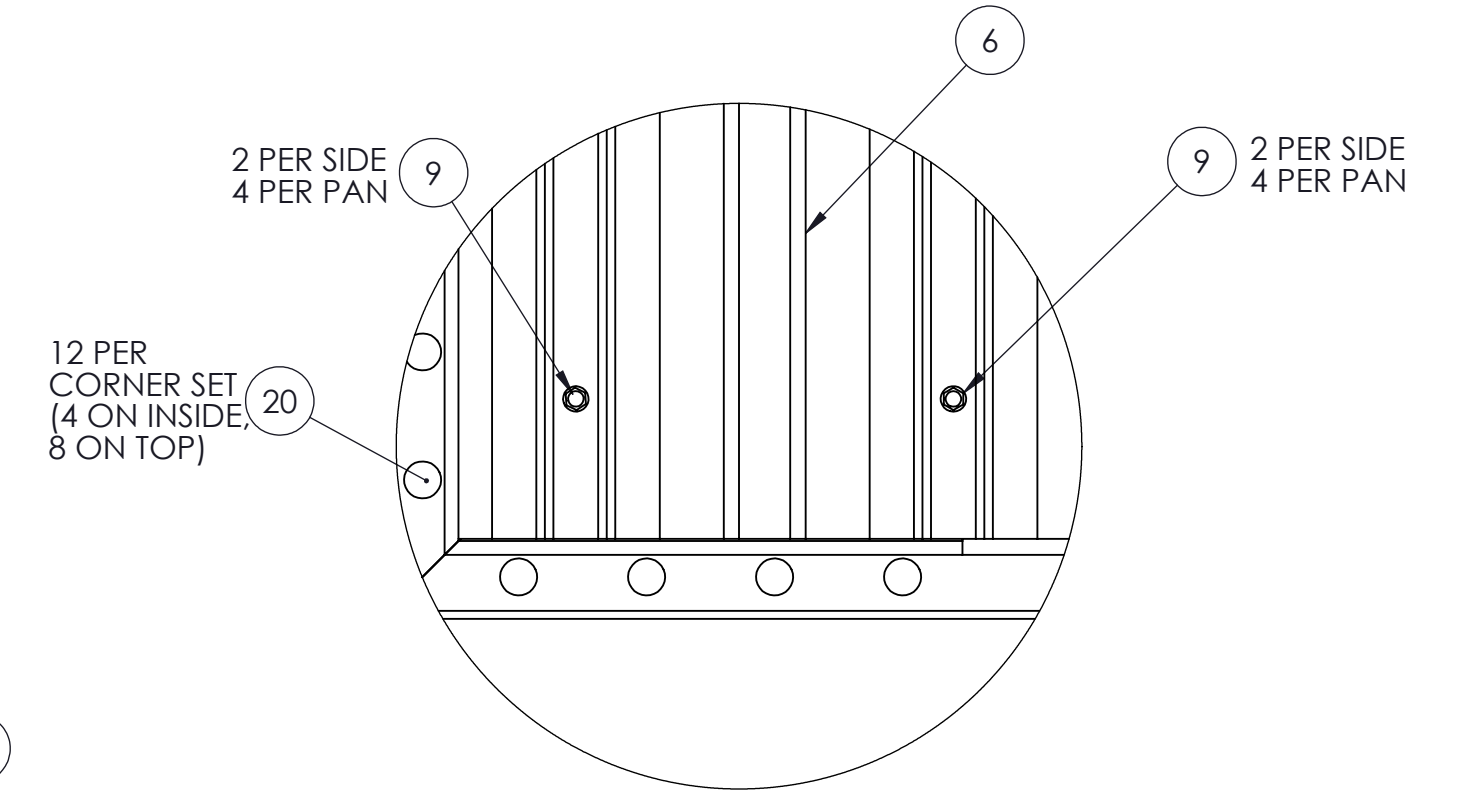
**DETAIL D  
SCALE 1:3**



**DETAIL E  
SCALE 1:3**



**DETAIL F  
SCALE 1:3**



**DETAIL G  
SCALE 1:3**

**ALL WALL FASTENERS TO BE SPECIFIED AND PROVIDED BY OTHERS**

ITEM NO.	PART NUMBER	DESCRIPTION
1	4x8 (6in) Ft Canopy	
2		4X6 GUTTER
3		2 x 2 x .125 Square Tube
4		2x2 Aluminum Wall Bracket
5		2x2 Aluminum Saddle Bracket
6		.032 Roll Form W-Pan
7		0.040 Flashing
8	Wall B	Wall (By Others)
9	#12 x 1" SS SCREW	For Installation of Canopy Decking
10	#14 x 1-1/2" SS SCREW	For Canopy Framing Connections
11	1-3/4" (1/4" Diameter) TAPCON SCREW	
12	1/2" x 3" SS BOLT	
13	1/2" SS Flat Washer	
14	1/2" SS Lock Washer	
15	1/2" SS HEX NUT	
16	SCUPPER	
17	ALUMINUM RIVET	ALUMINUM RIVET
18	NEW 6 Inch Corner Set Assembly	
19	6 Inch Gutter Corners (90 deg)	FOR GUTTER
20	ALUMINUM RIVET	ALUMINUM RIVET

NOTES:

STAMP

JOB NAME:

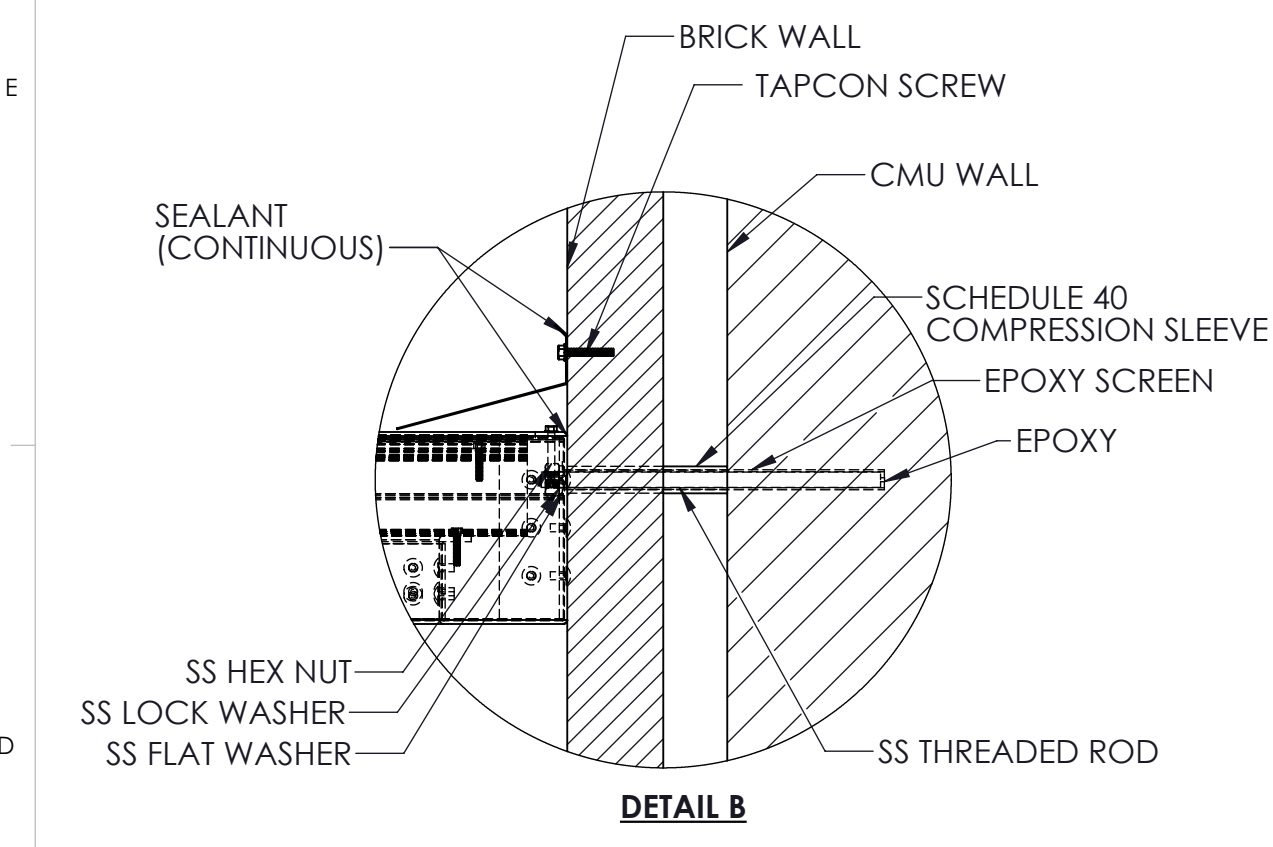
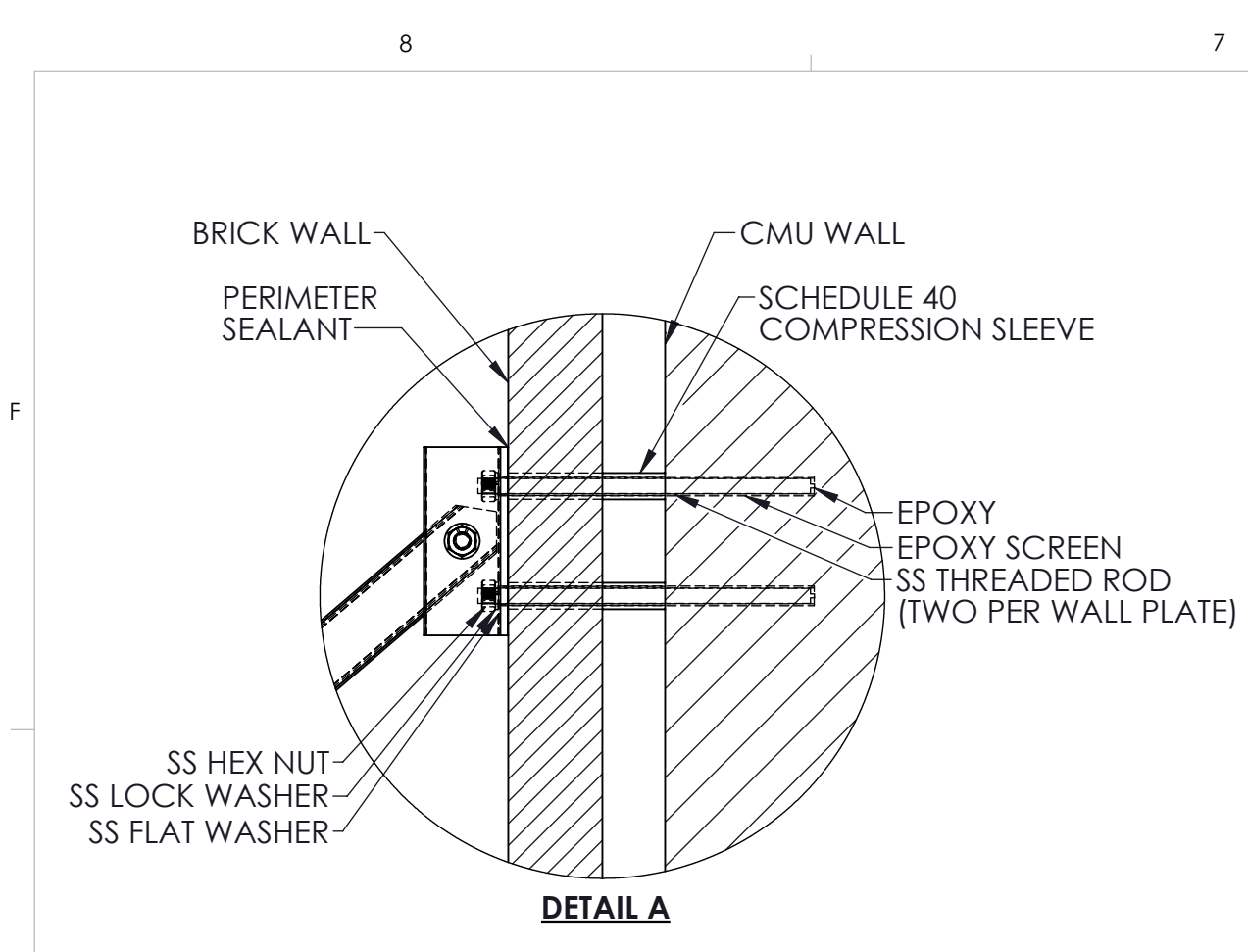
TITLE:

**CANOPY "B"**

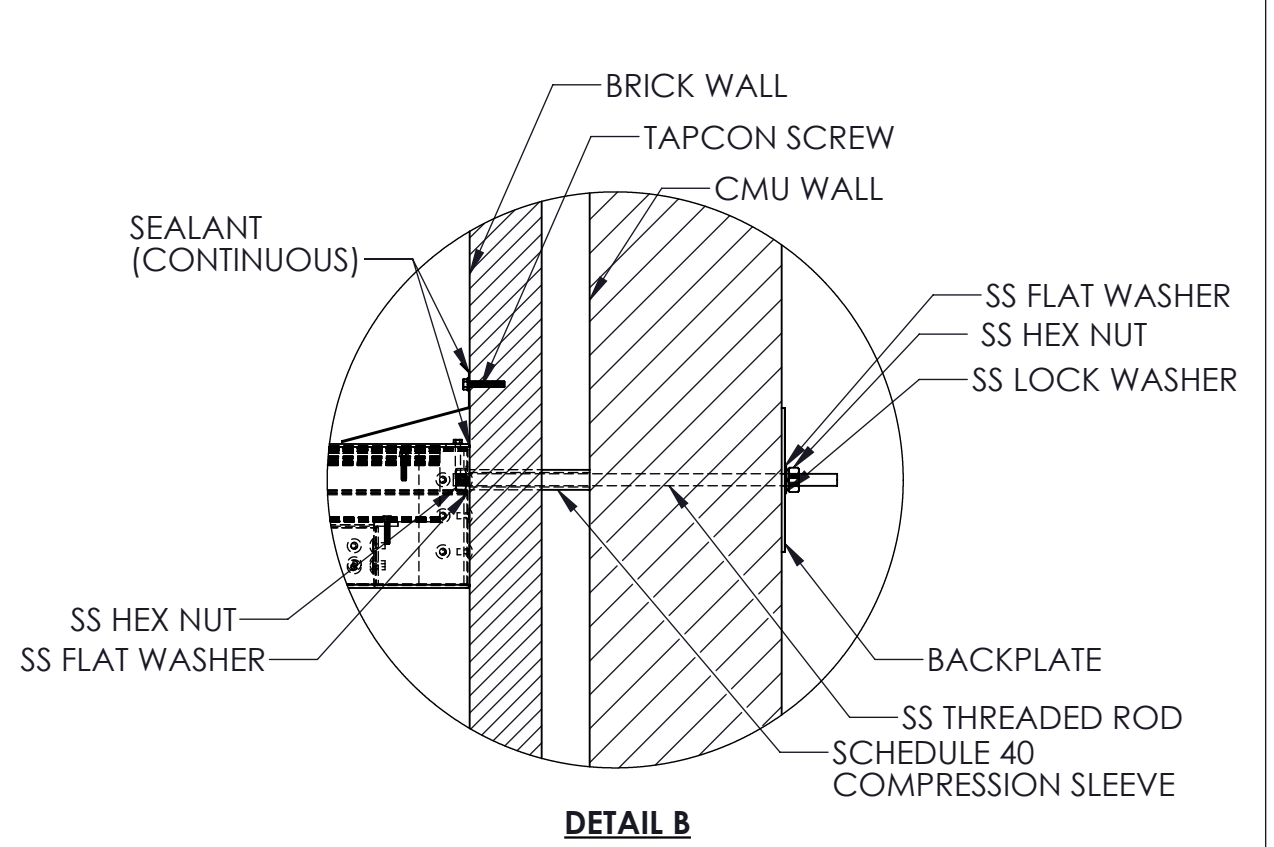
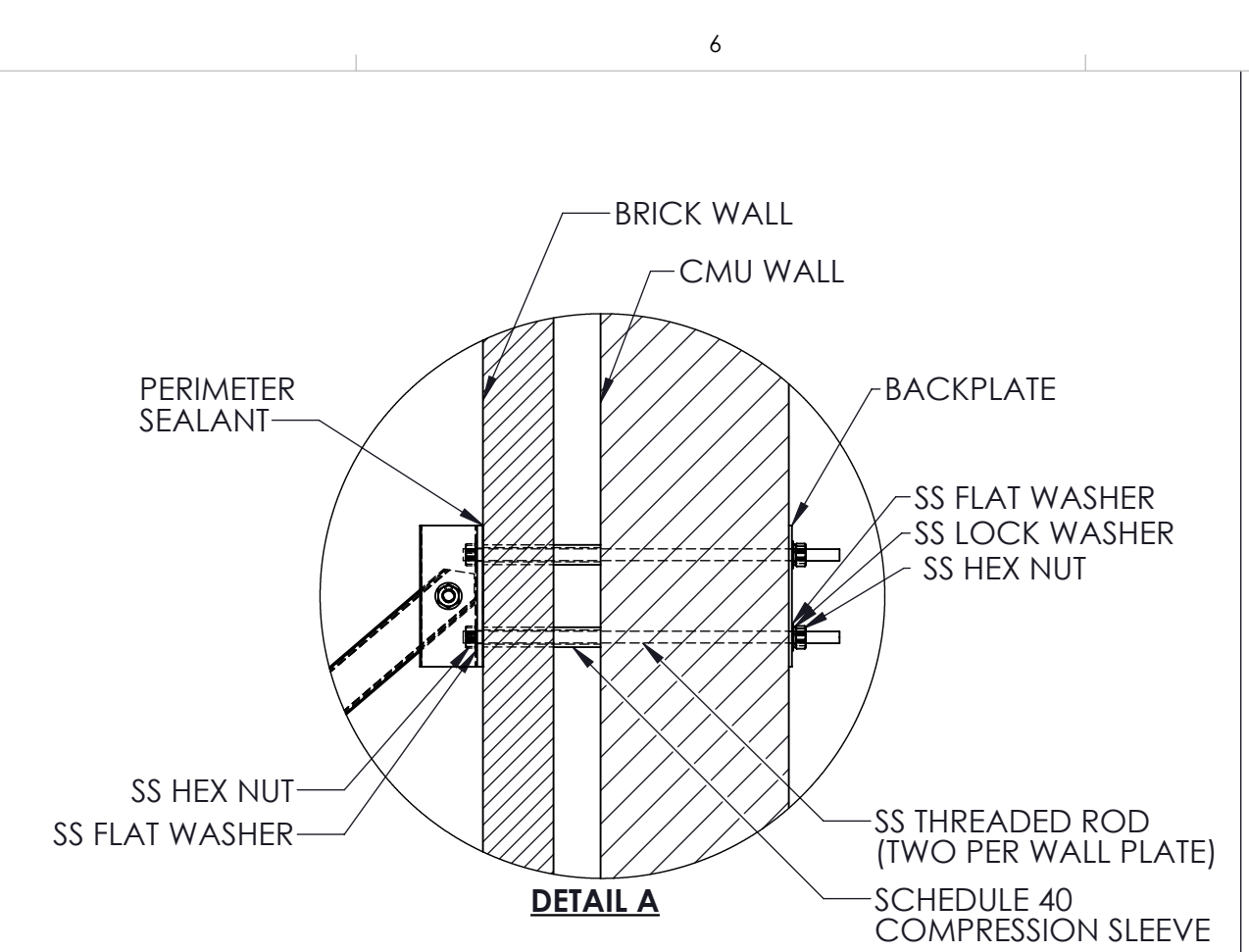
REVISION # :

DATE: 4/16/2021 SHEET 5 OF 5

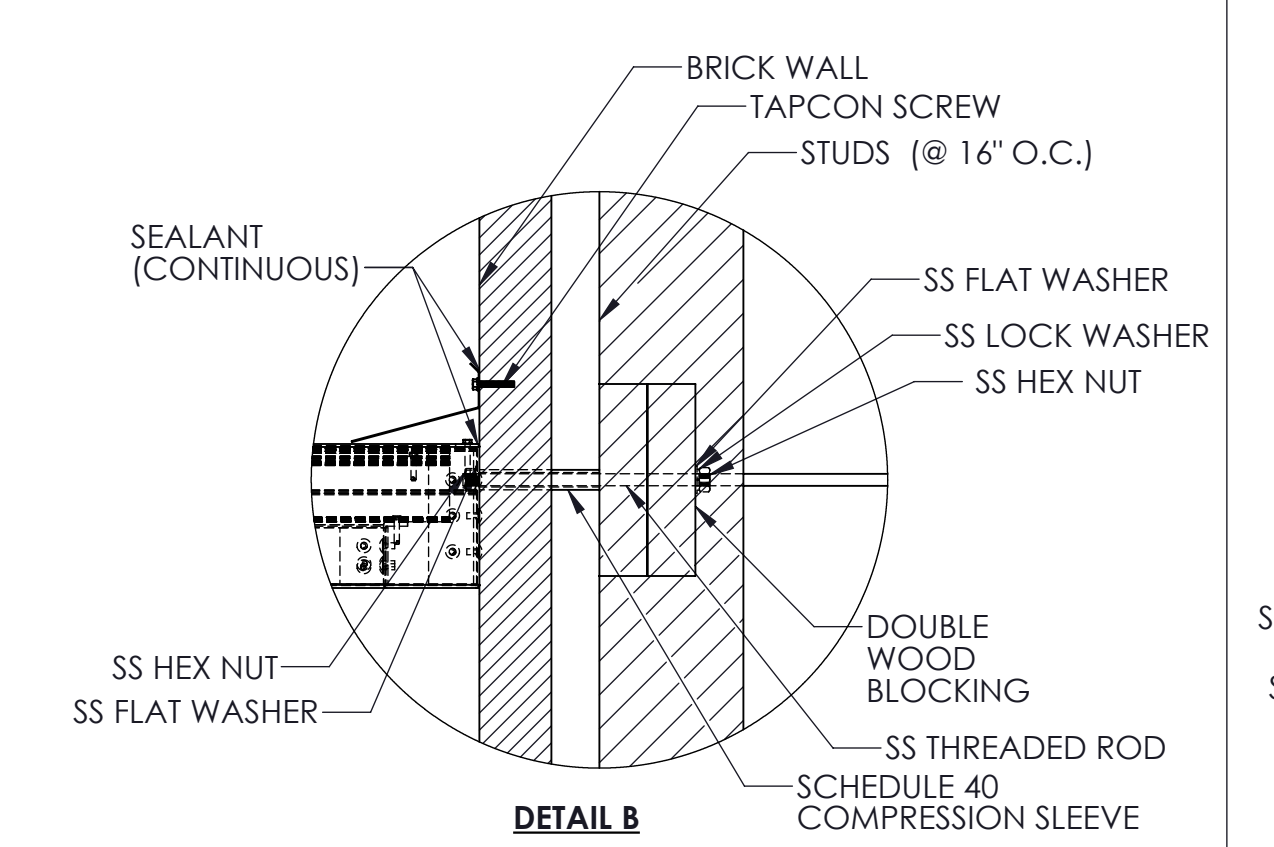
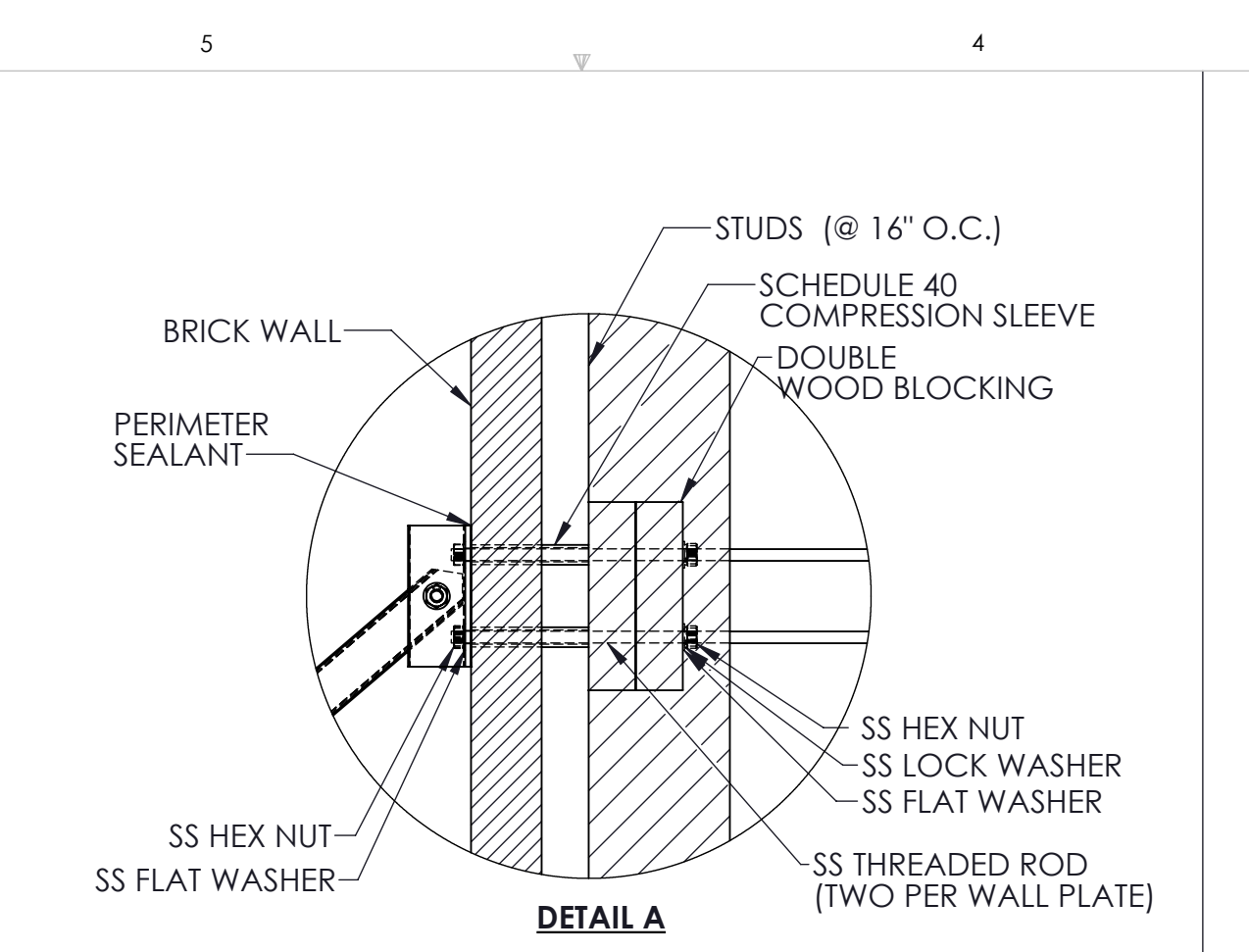




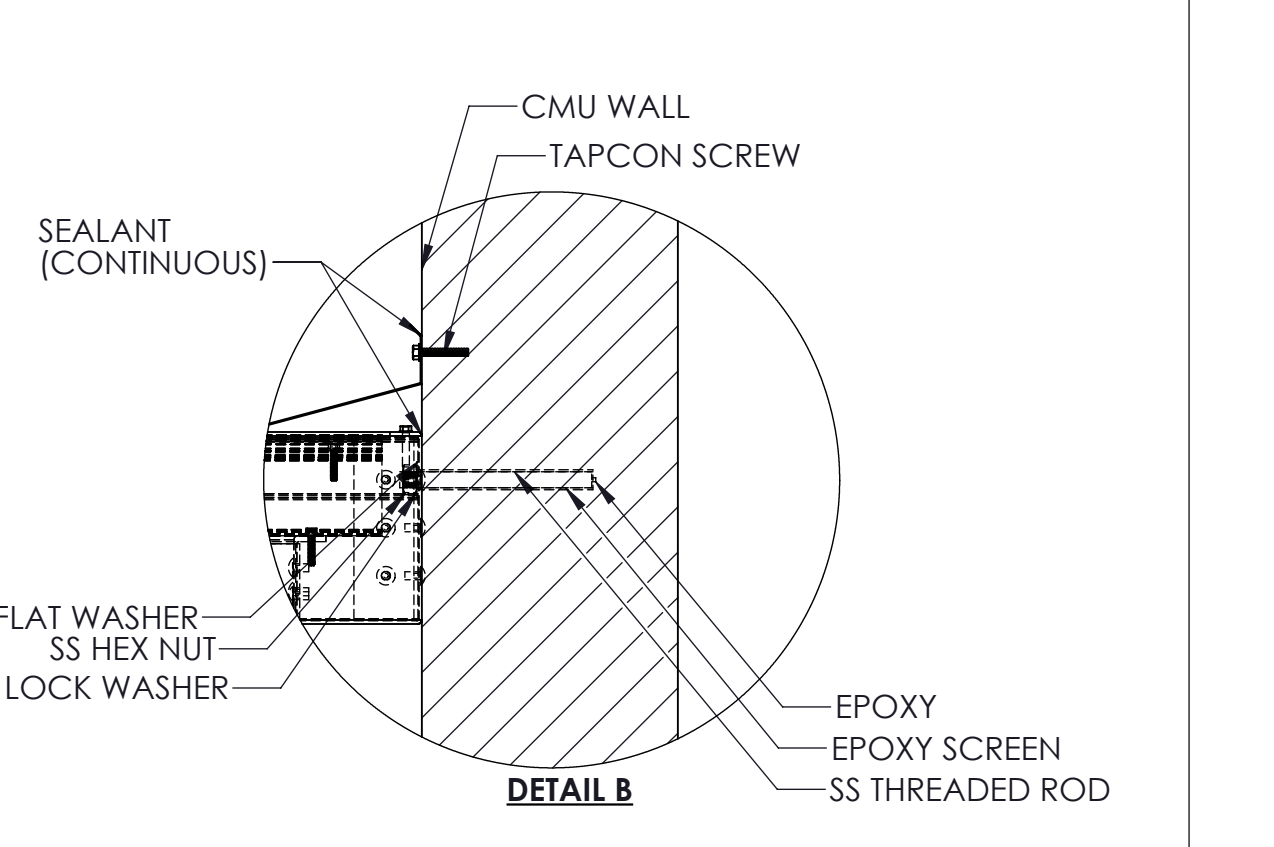
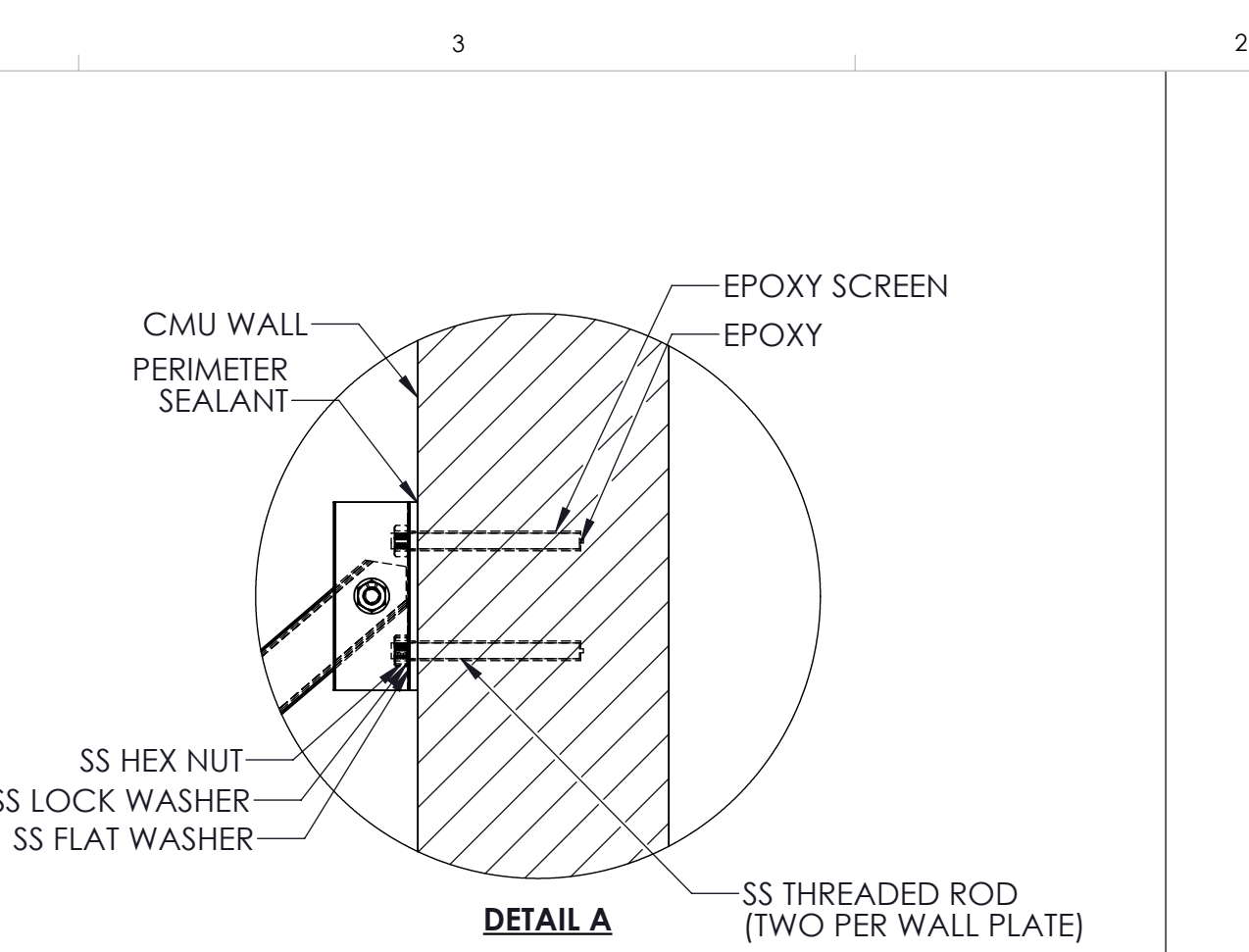
**Brick and CMU Wall  
(Epoxy Anchors)**



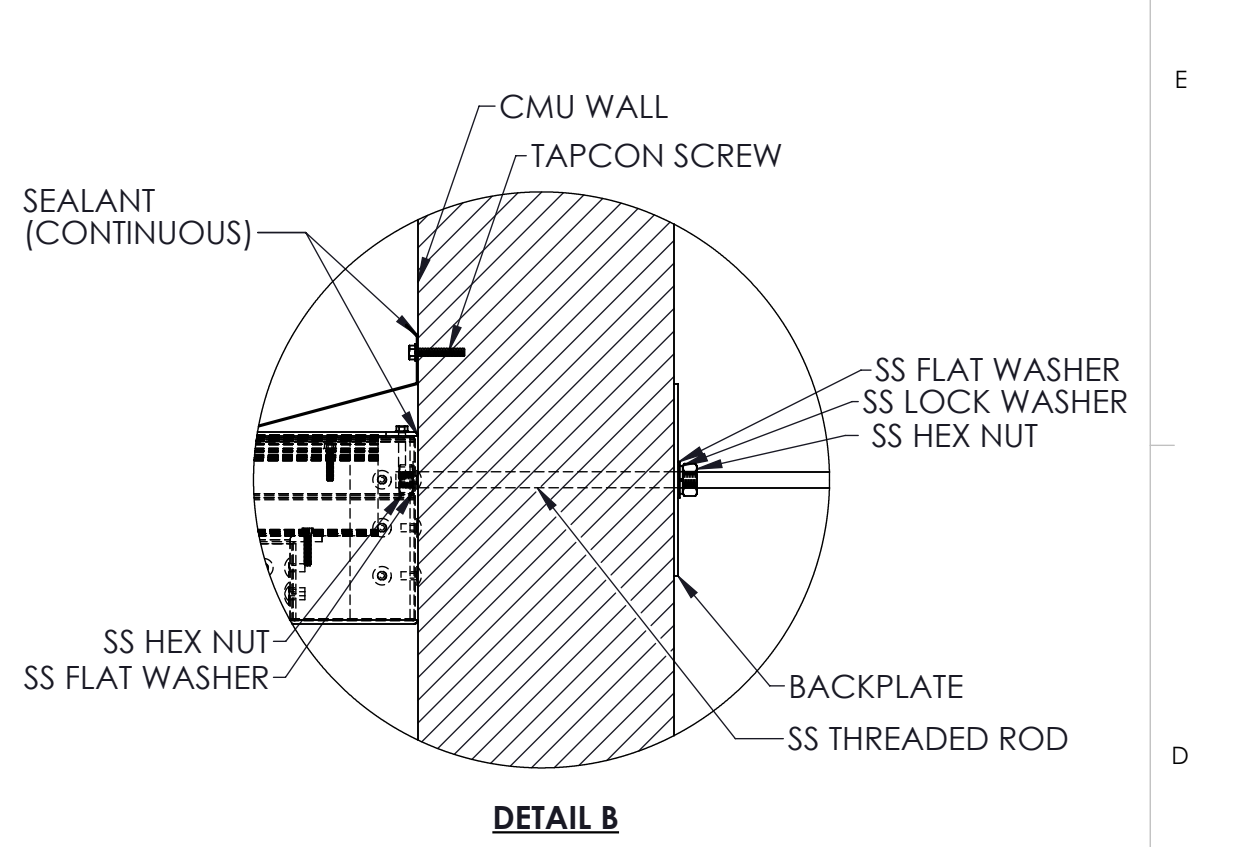
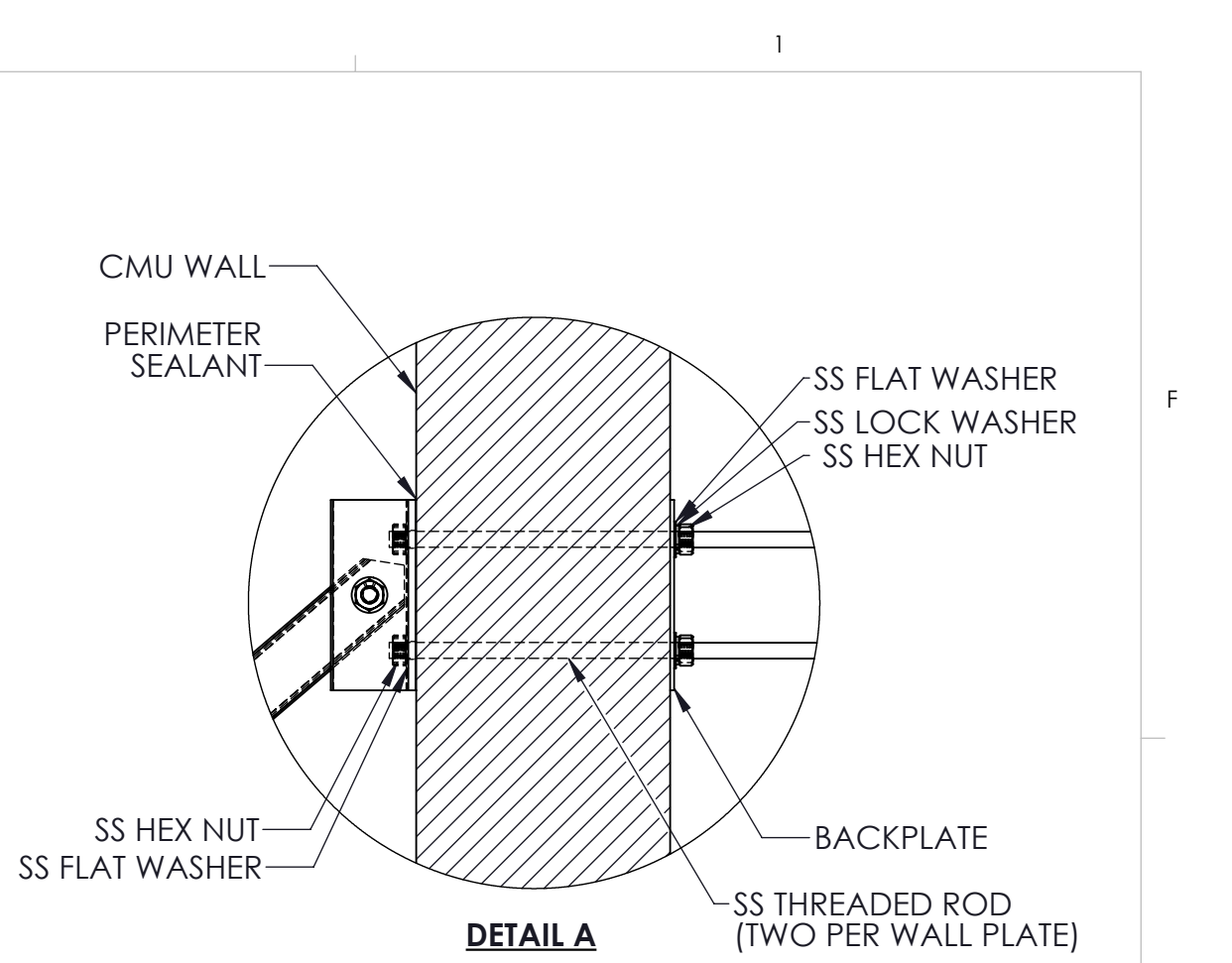
**Brick and CMU Wall  
(Through Bolts)**



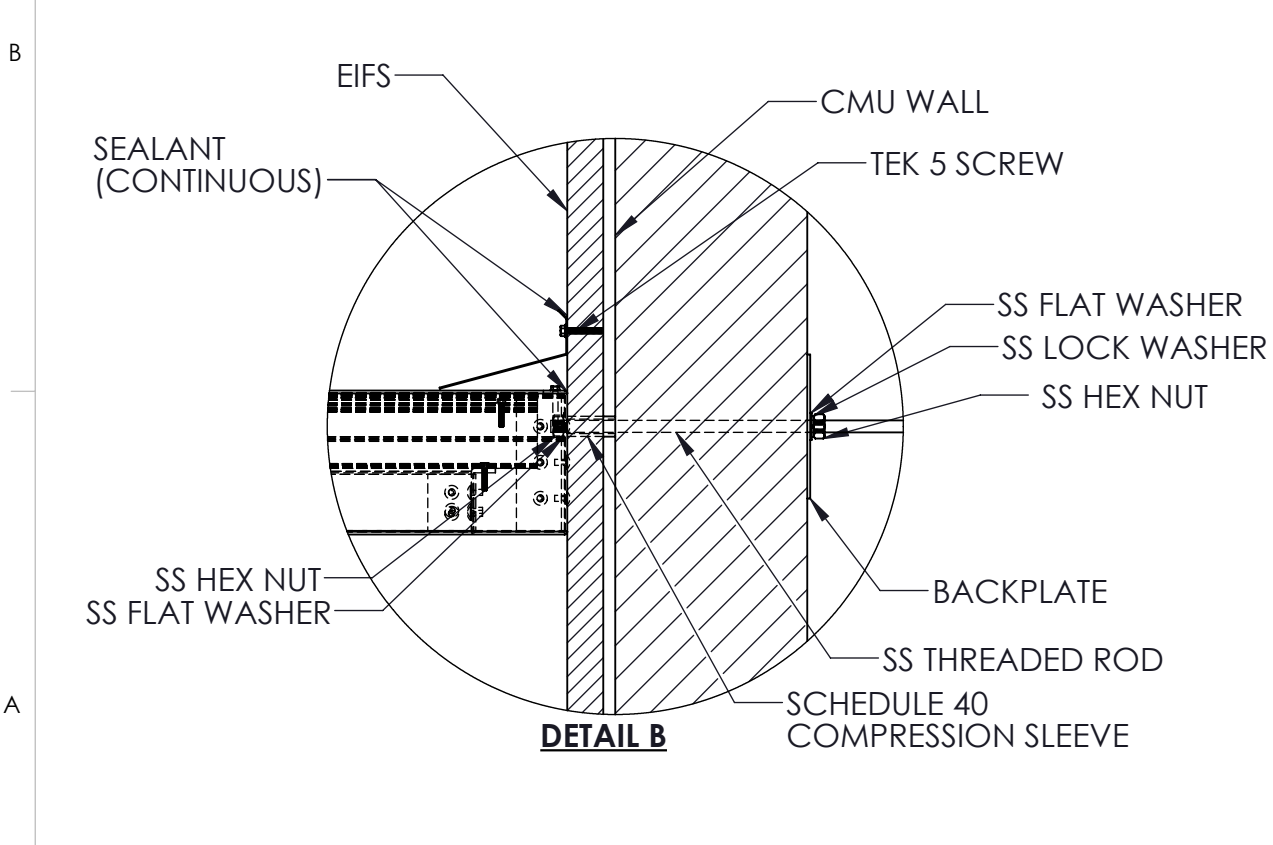
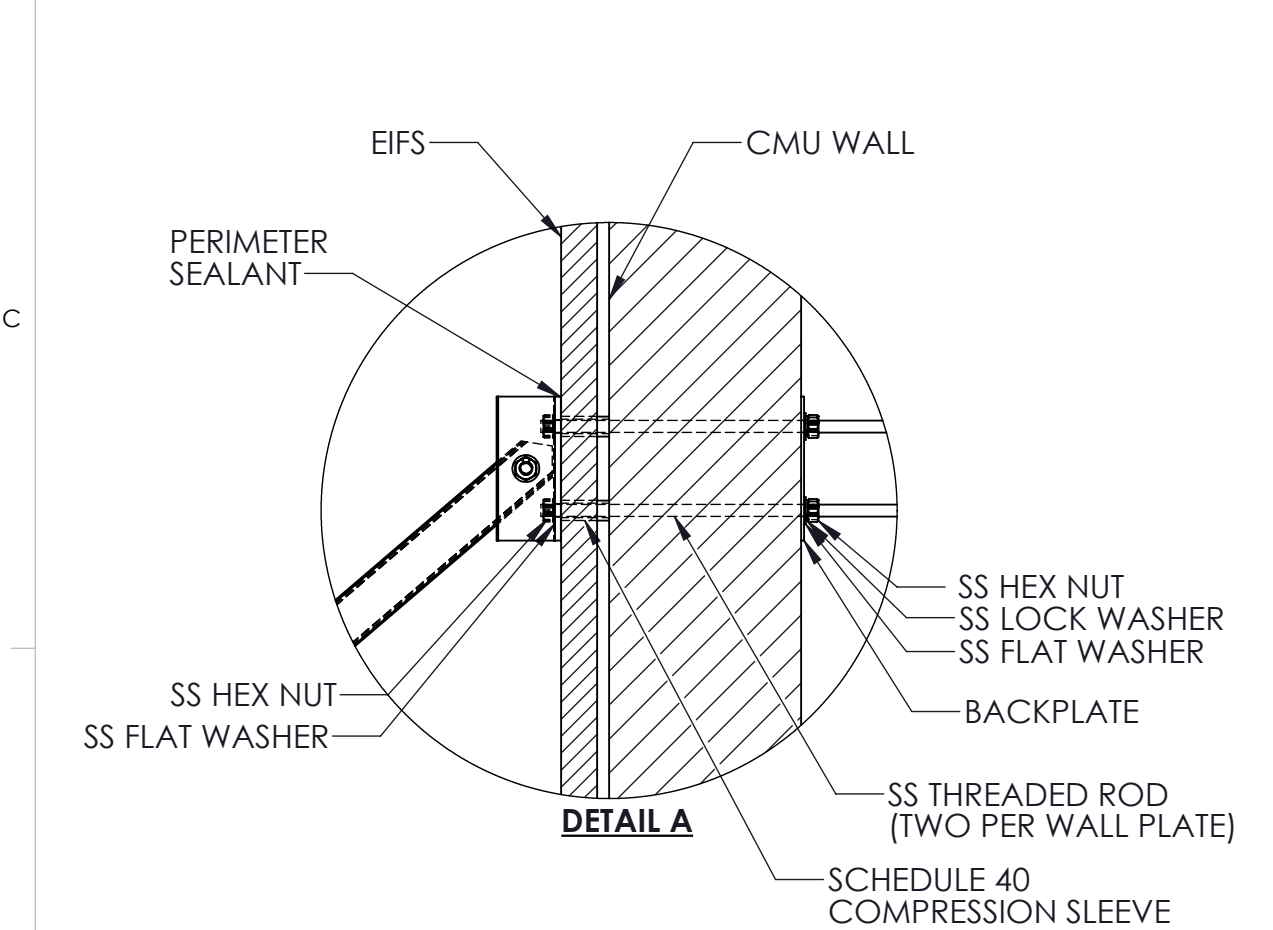
**Brick Wall with Studs  
(Through Bolts)**



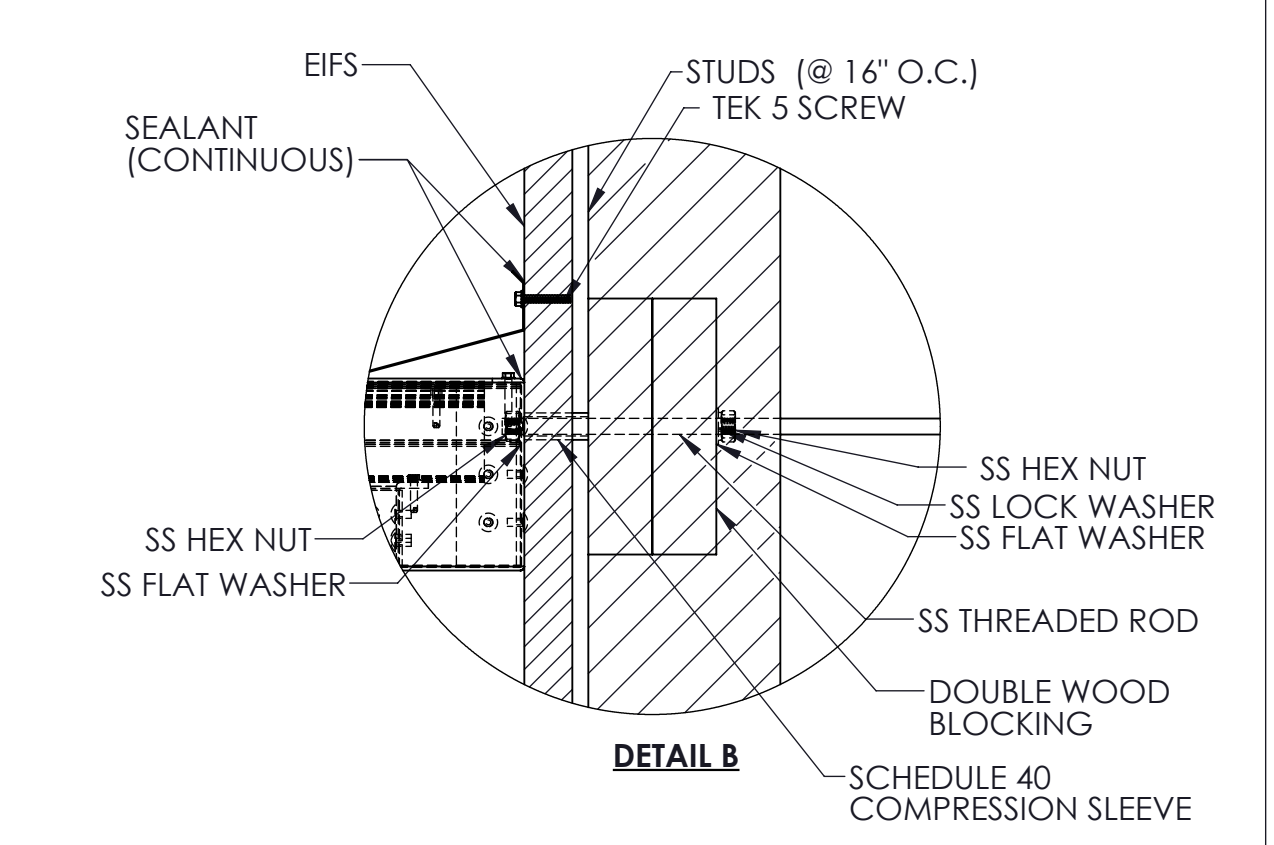
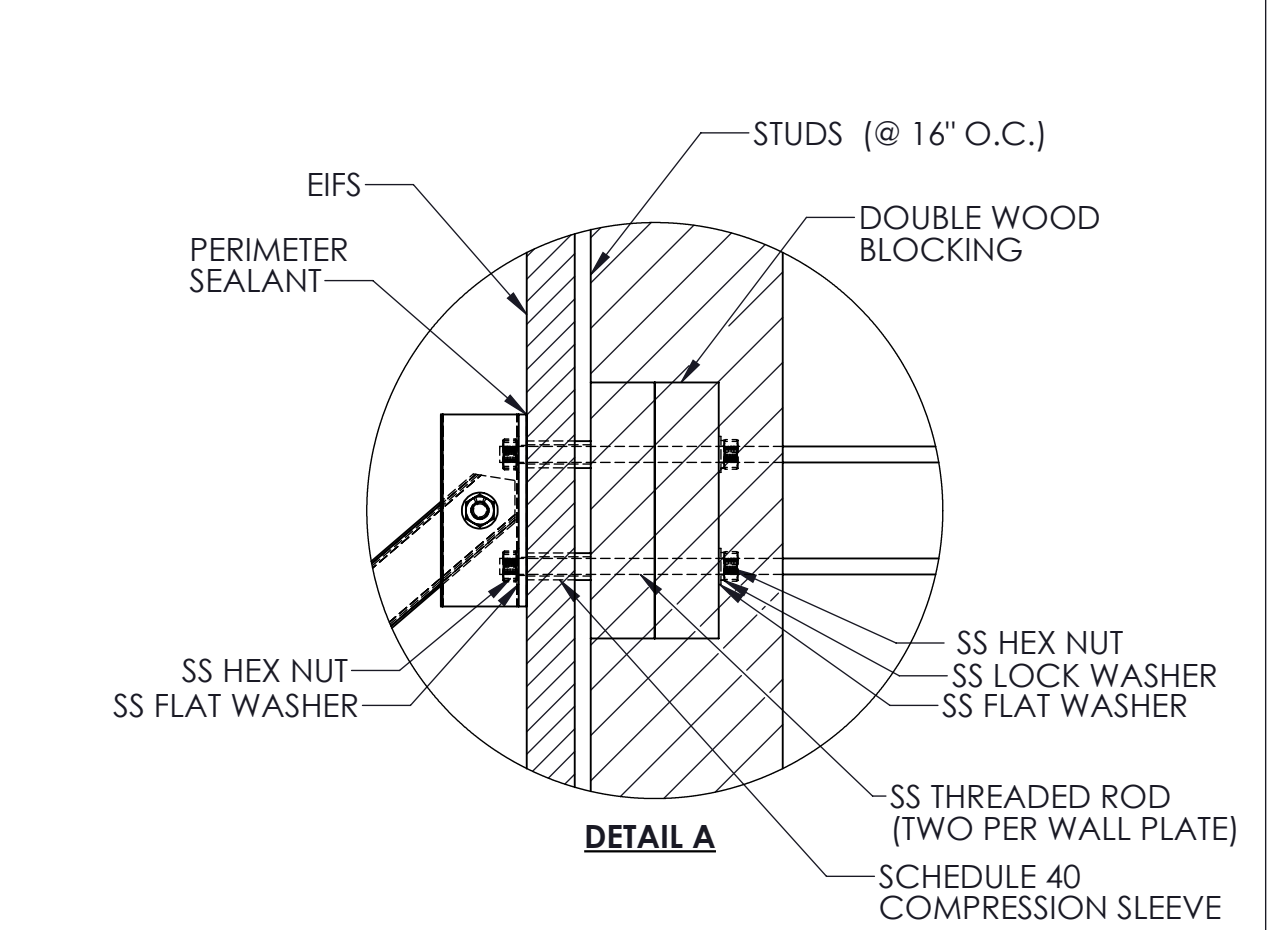
**CMU Wall  
(Epoxy Anchors)**



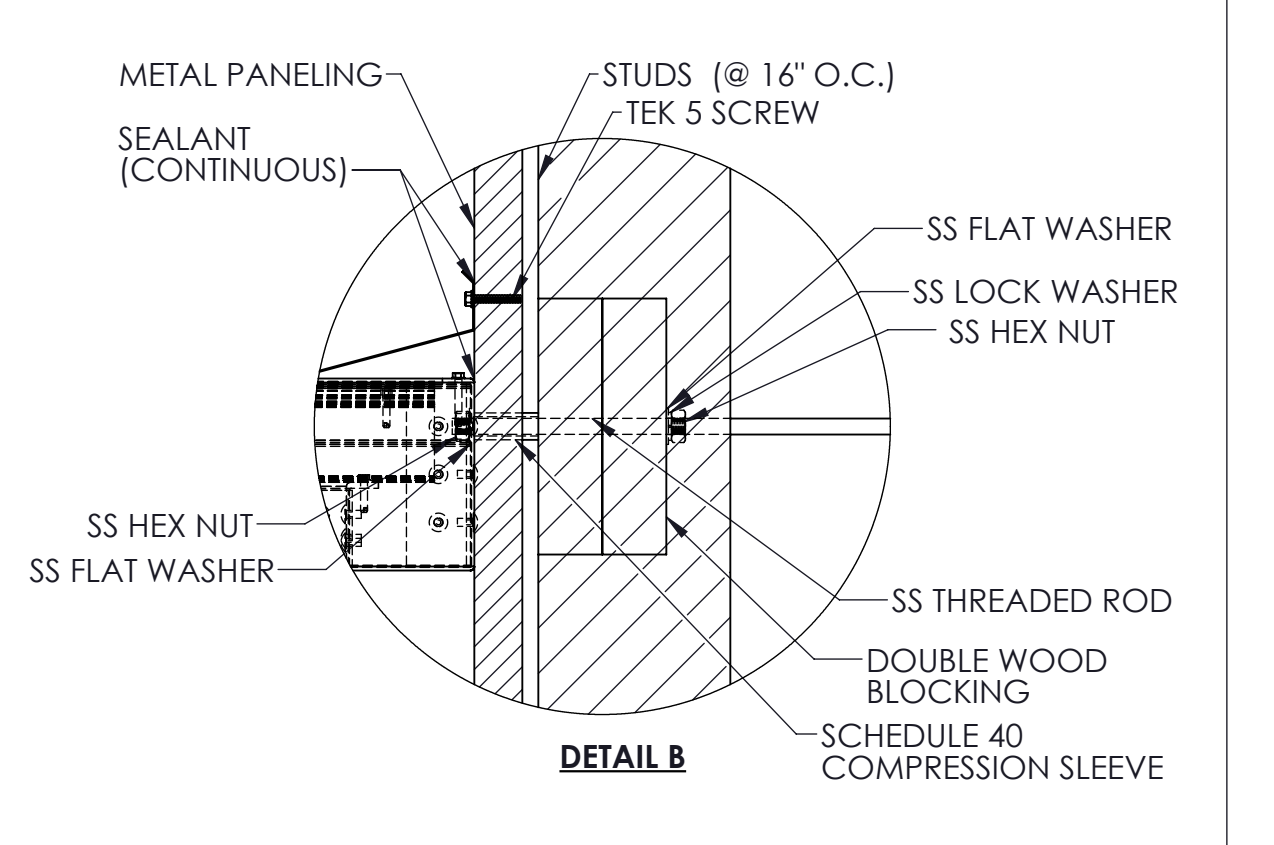
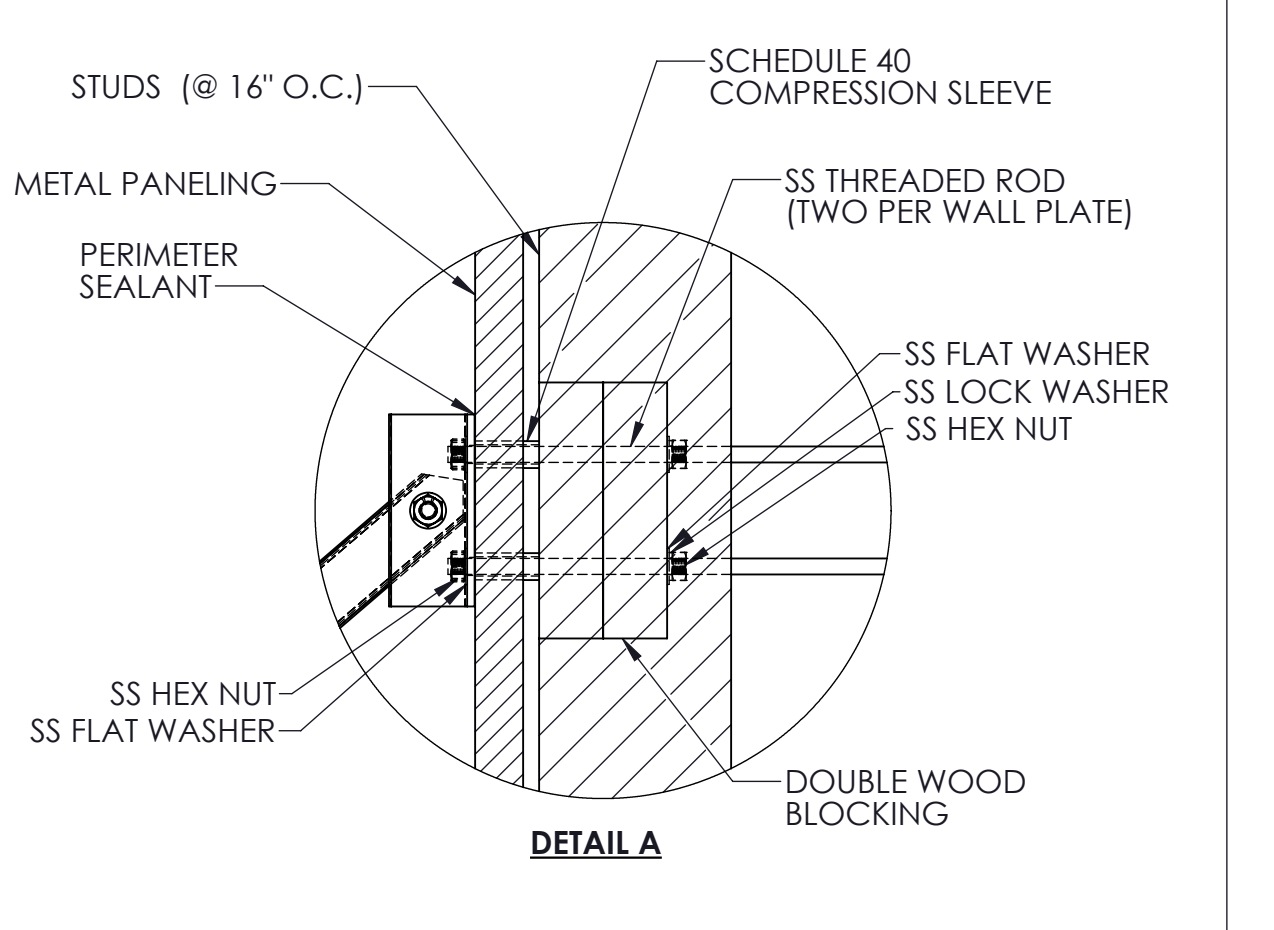
**CMU Wall  
(Through Bolts)**



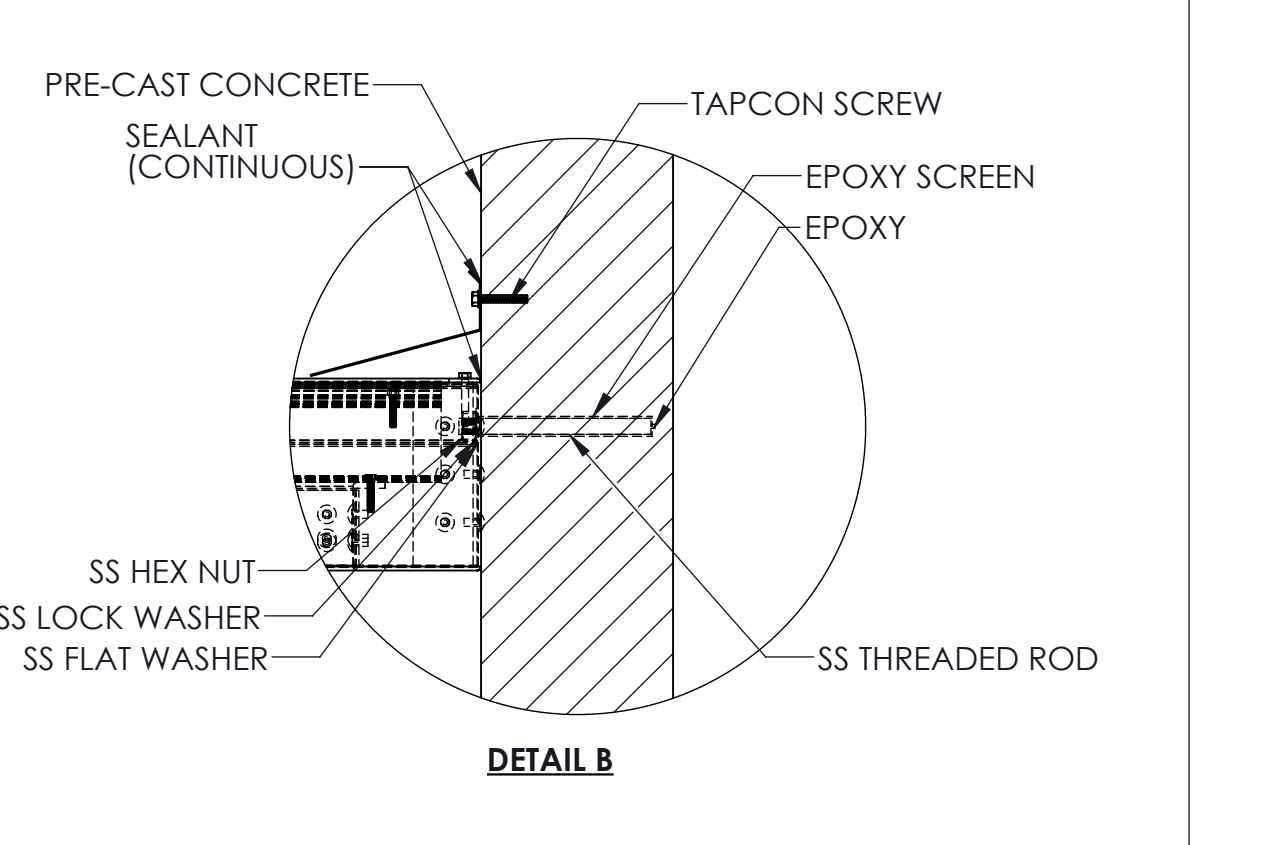
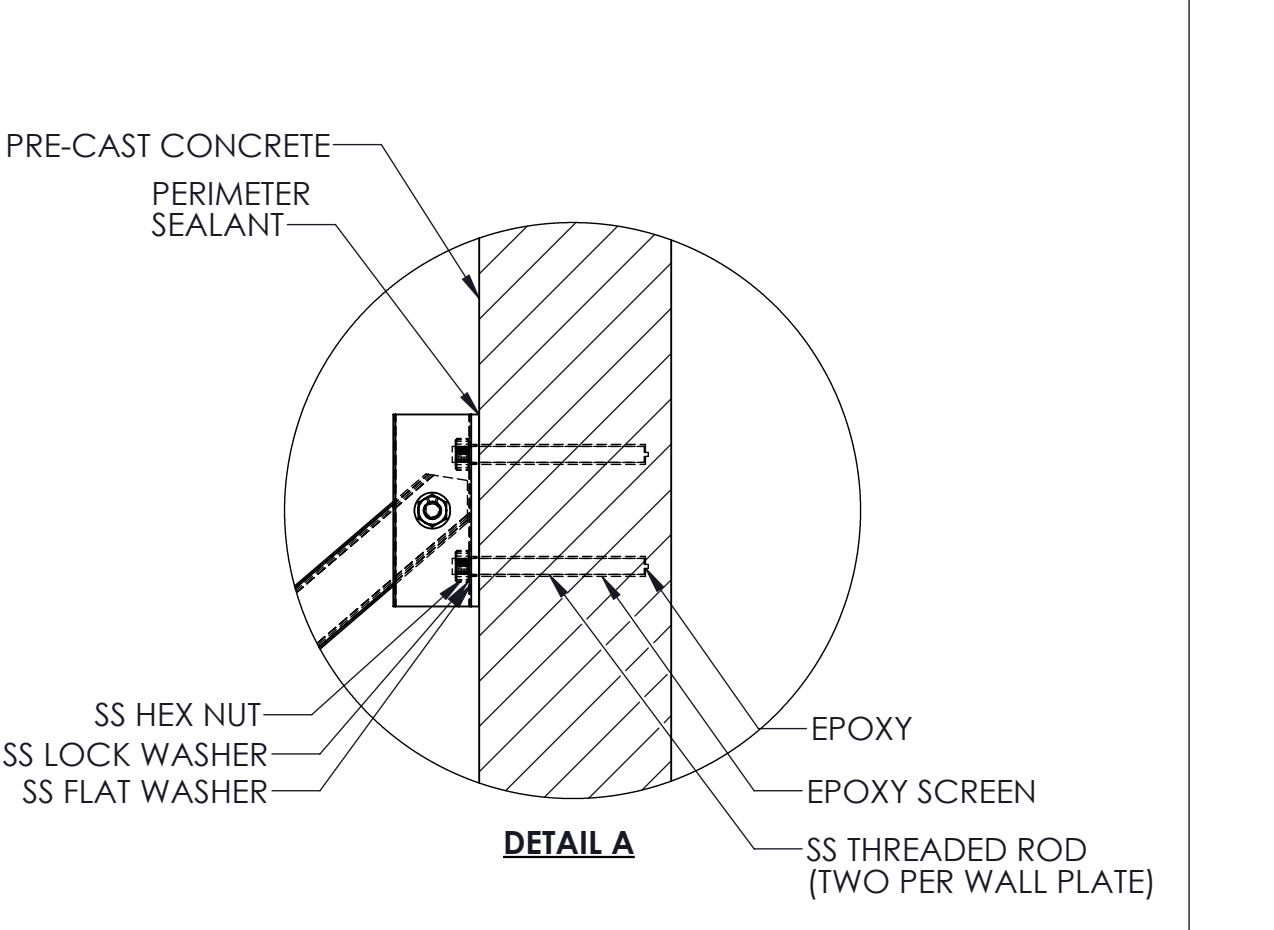
**EIFS and CMU Wall  
(Through Bolts)**



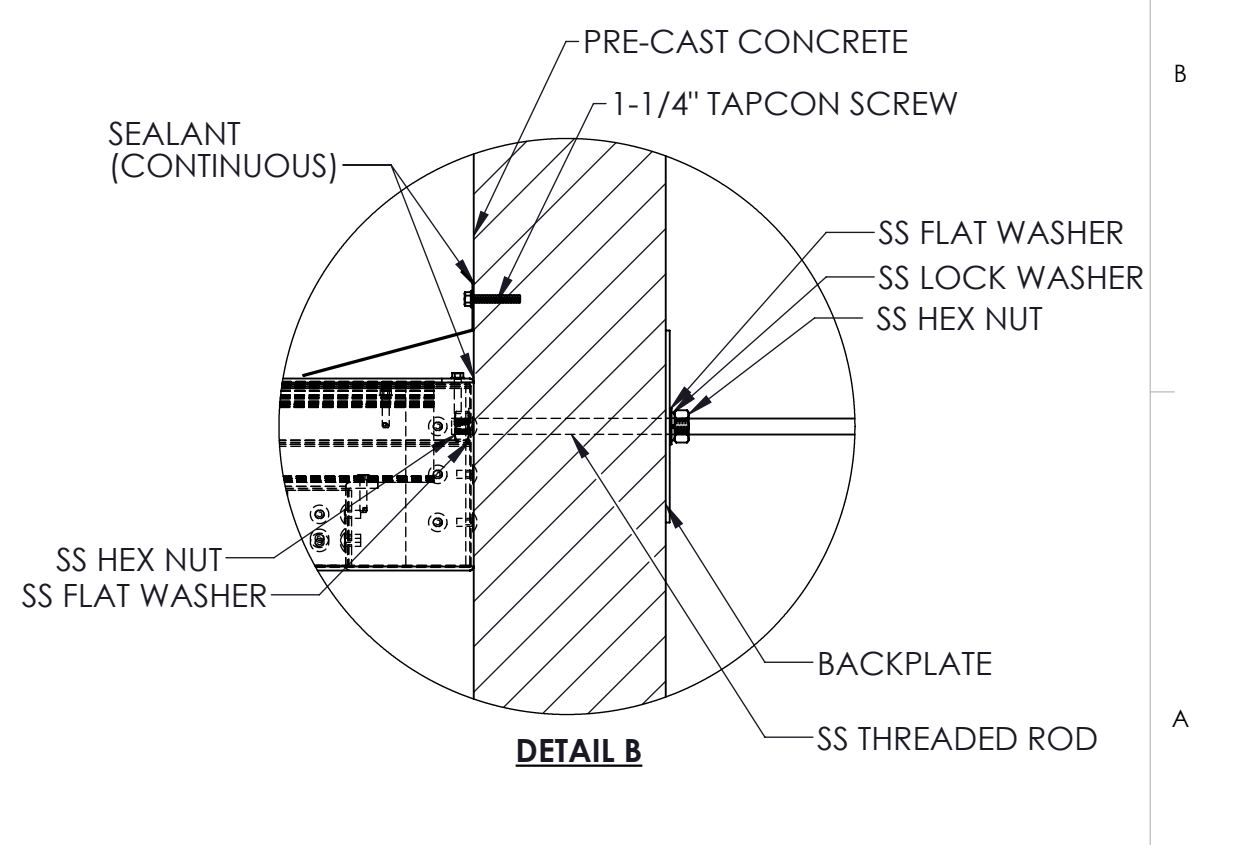
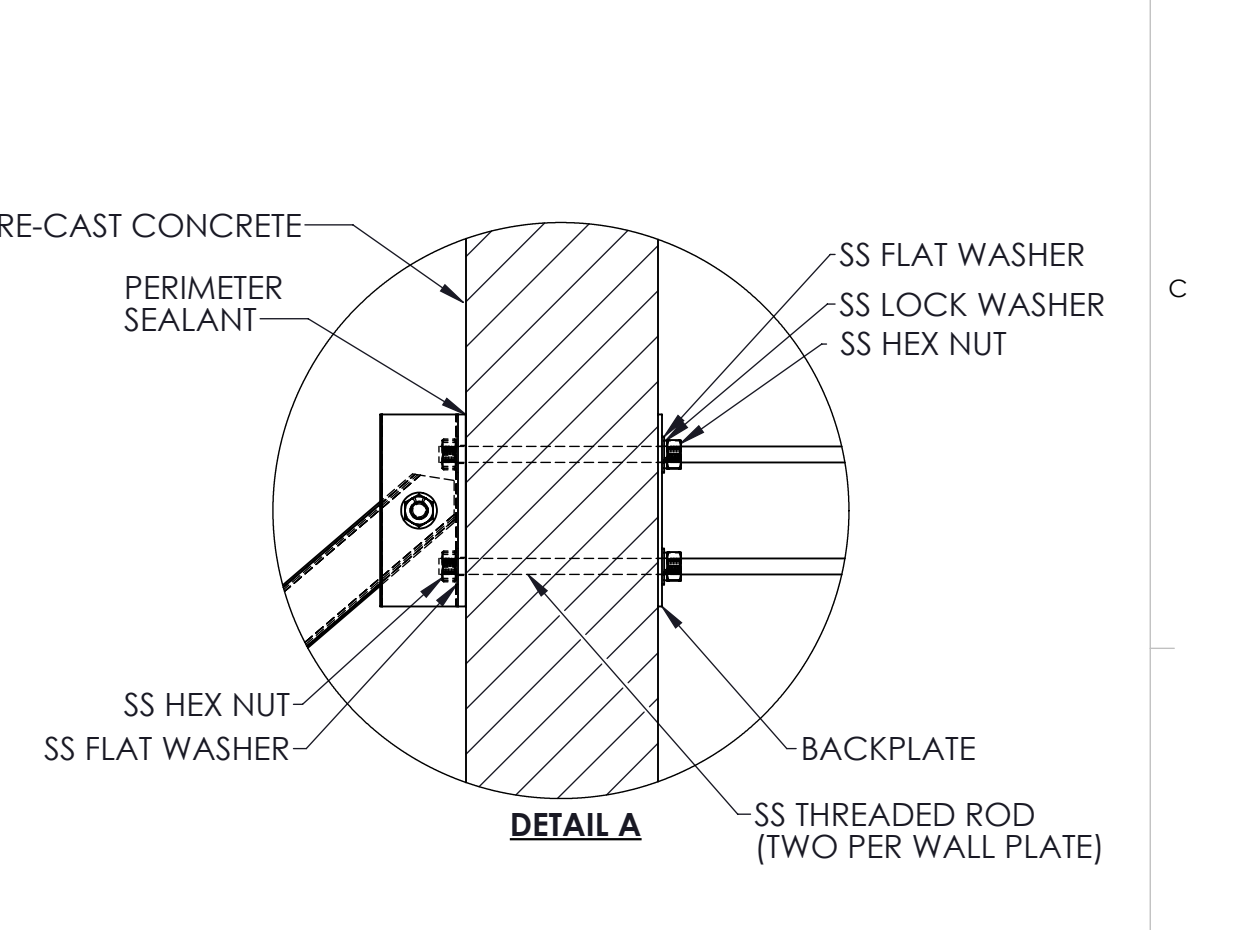
**EIFS and Studs  
(Through Bolts)**



**Metal Paneling and Studs  
(Through Bolts)**



**Pre-Cast Concrete Wall  
(Epoxy Anchors)**



**Pre-Cast Concrete Wall  
(Through Bolts)**